

BOYDELL COURT, ST. JOHNS WOOD PARK, LONDON NW8 6NH



BOYDELL COURT, ST. JOHNS WOOD PARK, LONDON NW8 6NH

A stunning three bedroom duplex penthouse apartment (on 10th & 11th floors) offering fabulous entertaining space and spectacular views from its private roof terrace, this 144 sq m/1560 sq ft apartment has been interior designed with attractive contemporary furnishings, fittings and fixtures. Boydell Court is a prestigious gated complex with 24 hour concierge, communal gardens and off street parking, located close to the amenities of both St John's Wood and Swiss Cottage.

- 3 Double Bedrooms • 3 Bathrooms • Reception Room • Open Plan Kitchen/ Dining Room • Conservatory • Private Roof Terrace • Lift • 24 Hour Concierge • Off Street Parking • EPC Rating C

EPC Rating: C Council Tax Band: H

£2,065 PER WEEK
FURNISHED/UNFURNISHED

TENANTS FEES: As well as paying the rent, tenants may also be required to make the following permitted payments:

Holding Deposit (maximum of 1 week's rent)

Security Deposit equivalent to 5 or 6 weeks' rent (AST tenancies)

Utilities, Communications services charges including TV licence, and Council Tax

Please contact us for information regarding any further Tenants permitted payments under the Tenant Fees Act 2019

Misrepresentation Act 1967. This brochure and the descriptions and measurements herein do not constitute representation and whilst every effort has been made to ensure accuracy, this cannot be guaranteed.

ARLINGTON

RESIDENTIAL

020 7722 3322

arlingtonresidential.com



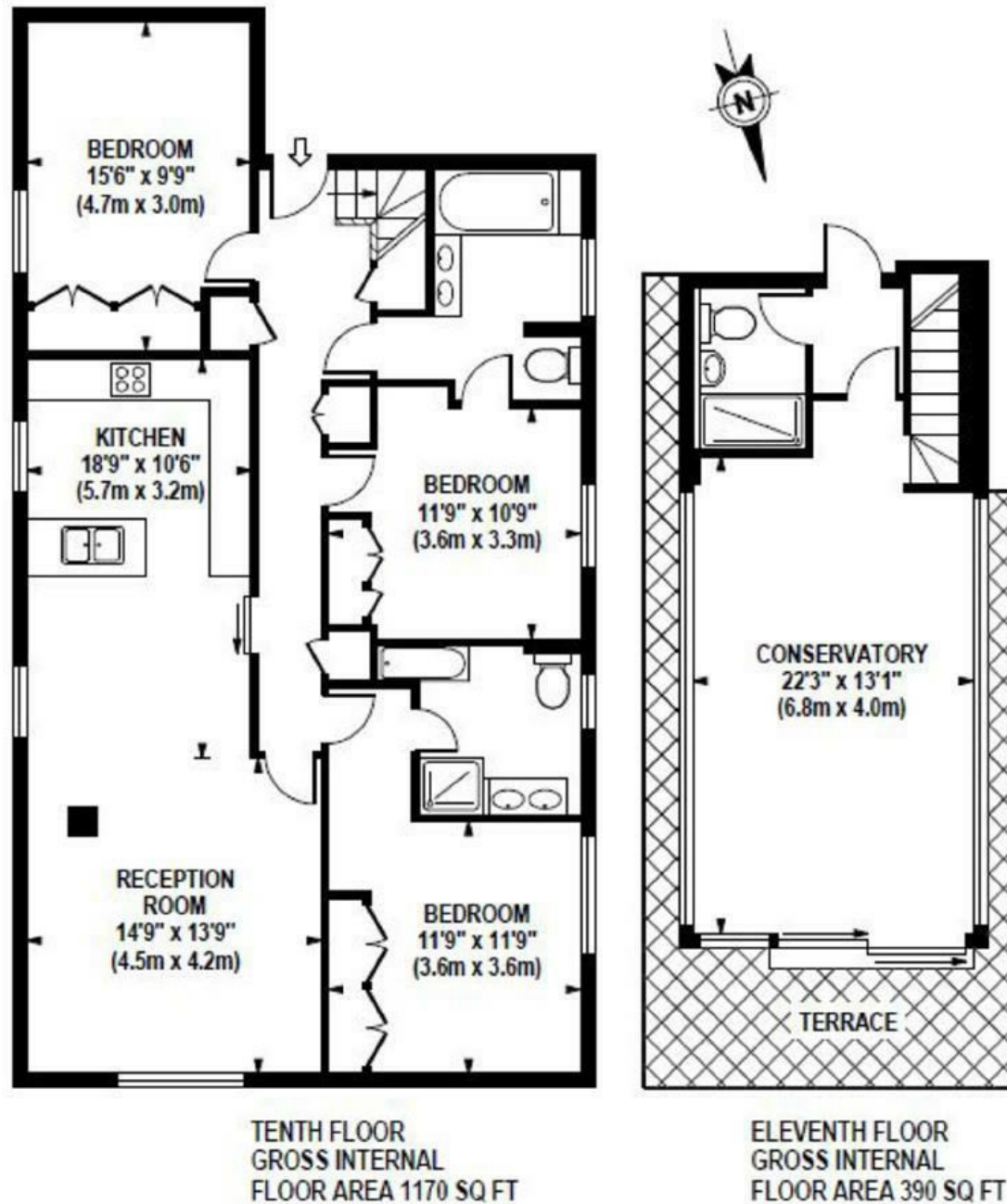






BOYDELL COURT

Approximate Gross Internal Area 1560 sq ft / 144.9 sq m



Although every attempt has been made to ensure accuracy, all measurements are approximate. The floor plan's for illustrative purposes only and not to scale. Measured in accordance to RICS standards.