

ST JOHN'S WOOD PARK, ST JOHN'S WOOD NW8 6NG



# ST JOHN'S WOOD PARK, ST JOHN'S WOOD NW8 6NG

A beautifully presented 1065sqft/99sqm apartment with stunning views from the 8th floor of this elegant 24h portered block in St John's Wood. Brand new fully refurbished to the highest standard, Bespoke Interior Design Wood flooring Double glazed German kitchen with stone worktops Bosch Appliances Separate Washer and Dryer

- Reception • Kitchen • Three Bedrooms • Three Bathrooms • Lift • Concierge

EPC Rating: C Council Tax Band:

**£1,300 PER WEEK**

**FURNISHED/UNFURNISHED**

**TENANTS FEES:** As well as paying the rent, tenants may also be required to make the following permitted payments:

Holding Deposit (maximum of 1 week's rent)

Security Deposit equivalent to 5 or 6 weeks' rent (AST tenancies)

Utilities, Communications services charges including TV licence, and Council Tax

Please contact us for information regarding any further Tenants permitted payments under the Tenant Fees Act 2019

Misrepresentation Act 1967. This brochure and the descriptions and measurements herein do not constitute representation and whilst every effort has been made to ensure accuracy, this cannot be guaranteed.

**ARLINGTON**

RESIDENTIAL

**020 7722 3322**

[arlingtonresidential.com](http://arlingtonresidential.com)

















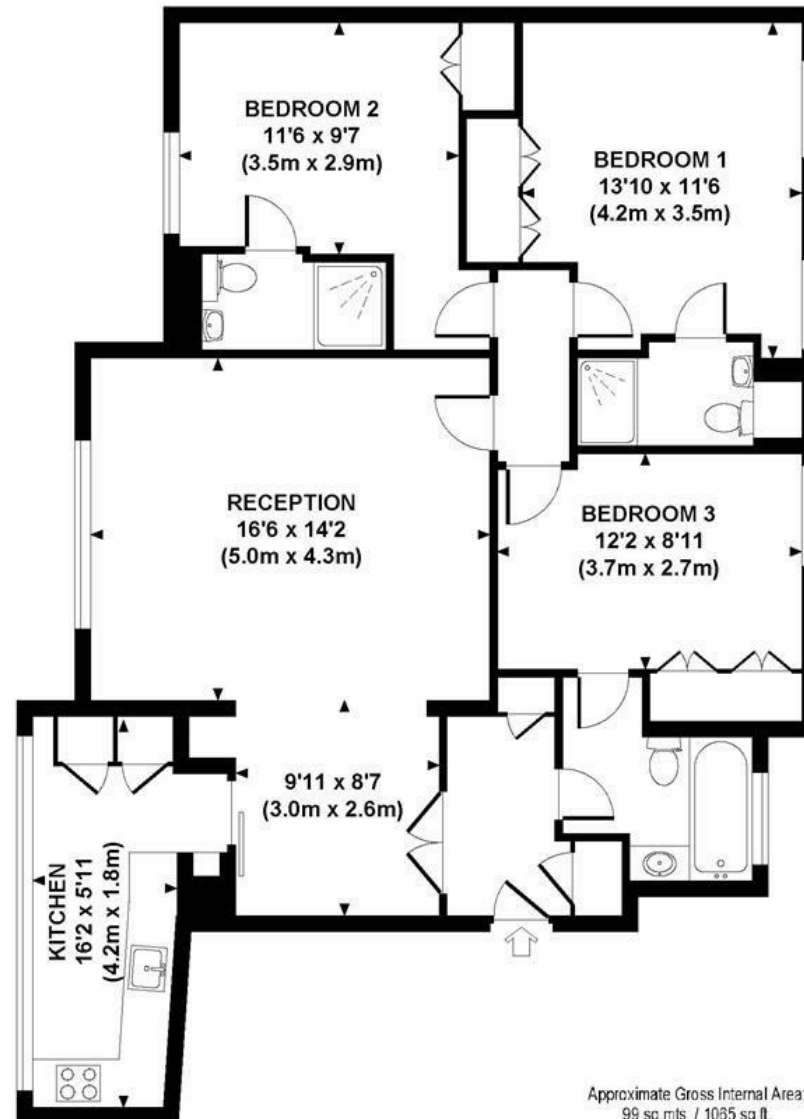






52 BOYDELL COURT

EIGHTH FLOOR



Although every attempt has been made to ensure accuracy, all measurements are approximate.  
The floor plan's for illustrative purposes only and not to scale. Measured in accordance to RICS standards.  
DE-PHOTOGRAPHY.NET