



WALSINGHAM, QUEENSMEAD, NW8 6RL

WALSINGHAM, QUEENSMEAD, NW8 6RL

A well-presented, three bedroom apartment in a portered building in St John's Wood. NW8 - A superb three bedroom apartment (1,324 sq ft /123 sq m) providing well-planned family accommodation enviably positioned on the 10th floor, offering stunning far-reaching views over the London skyline.

Walsingham is an exclusive private development set off St John's Wood Park with 24-hour porterage and attractive landscaped gardens. The flat comes with its own private garage, along with two parking permits for the residents' parking bays.

Walsingham is conveniently located close to amenities on St John's Wood High Street and St John's Wood Underground Station (Jubilee Line).

- 3 Bedrooms • 2 Bathrooms (1 en suite) • Guest Cloakroom • Double Reception Room with • Open Plan Kitchen • Entrance Hall • Balcony • Lift • 24 Hour Porter/Security • Resident's Off Street Parking

EPC Rating: E Council Tax Band: G

£1,384 PER WEEK

UNFURNISHED

TENANTS FEES: As well as paying the rent, tenants may also be required to make the following permitted payments:

Holding Deposit (maximum of 1 week's rent)

Security Deposit equivalent to 5 or 6 weeks' rent (AST tenancies)

Utilities, Communications services charges including TV licence, and Council Tax

Please contact us for information regarding any further Tenants permitted payments under the Tenant Fees Act 2019

Misrepresentation Act 1967. This brochure and the descriptions and measurements herein do not constitute representation and whilst every effort has been made to ensure accuracy, this cannot be guaranteed.















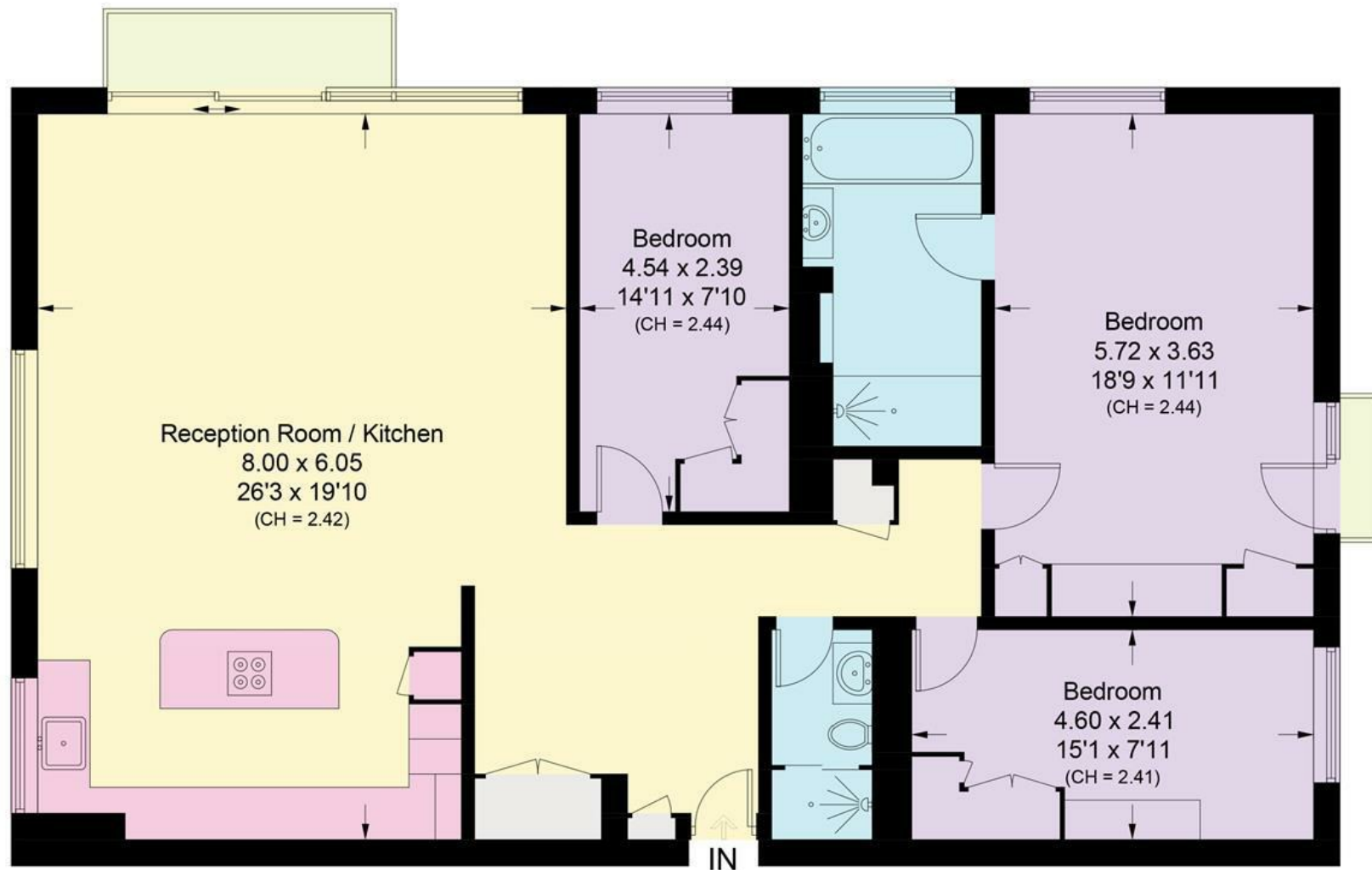






Walsingham, NW8

Approximate Area = 123 sq m / 1324 sq ft
Including Limited Use Area (1.6 sq m / 17 sq ft)



Tenth Floor

Approximate Area = 123 sq m / 1324 sq ft
Including Limited Use Area (1.6 sq m / 17 sq ft)

Surveyed and drawn in accordance with the International property measurements standards (IPMS 2: Residential) Not drawn to scale unless stated.
Whilst every care is taken in the preparation of this plan, please check all dimensions, shapes and compass bearings before making any decisions reliant upon them.