



RYDERS TERRACE, ST JOHNS WOOD, NW8 0EE

RYDERS TERRACE, ST JOHNS WOOD, NW8 0EE

Located within this residential mews close to Abbey Road, is a charming two/three bedroom house with a small terrace which has been beautifully modernised.

The house is primarily arranged over two floors with reception room, kitchen and dining area on the ground floor, and two bedrooms and a bathroom plus roof terrace on the first floor. There is a further loft room on the second floor.

Ryders Terrace is residential cul de sac off Blenheim Terrace with its cluster of local shops, restaurants and cafes practically at the doorstep.

The nearest tube stations are St. John's Wood Jubilee Line (0.5 miles) and Maida Vale Bakerloo Line (0.6 miles).

- 2/3 Bedrooms • Reception Room • Open Plan Dining Room • Family Bathroom • Kitchen • Utility • Room • Roof Terrace • EPC rating E • Westminster Council Tax Band G

EPC Rating: E Council Tax Band: G

£1,300,000

NULL

TENANTS FEES: As well as paying the rent, tenants may also be required to make the following permitted payments:

Holding Deposit (maximum of 1 week's rent)

Security Deposit equivalent to 5 or 6 weeks' rent (AST tenancies)

Utilities, Communications services charges including TV licence, and Council Tax

Please contact us for information regarding any further Tenants permitted payments under the Tenant Fees Act 2019

Misrepresentation Act 1967. This brochure and the descriptions and measurements herein do not constitute representation and whilst every effort has been made to ensure accuracy, this cannot be guaranteed.

ARLINGTON

RESIDENTIAL

020 7722 3322

arlingtonresidential.com















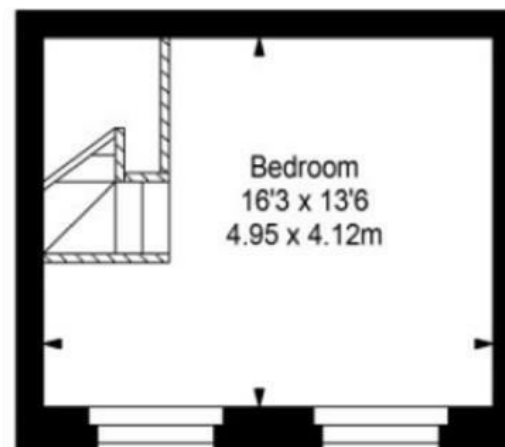


RYDERS

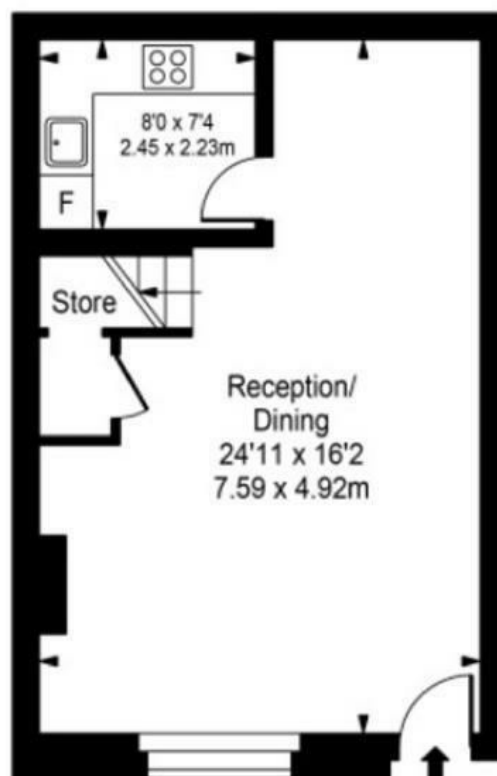
TERRACE

NW 8

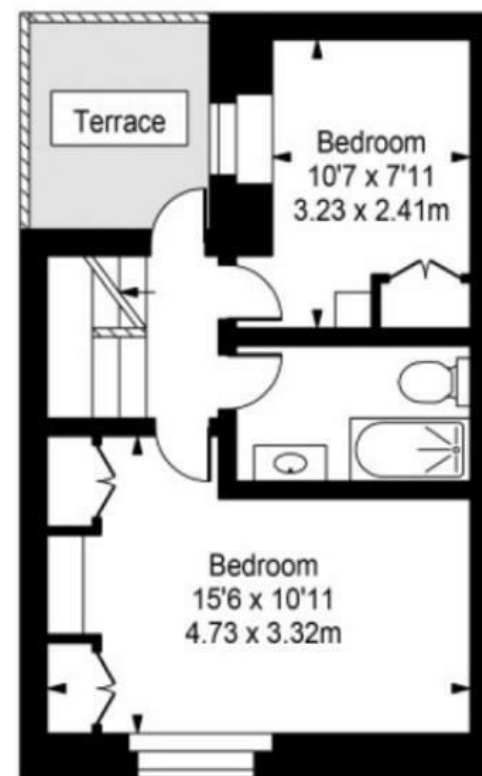
Ryders Terrace



Second Floor



Ground Floor



First Floor

Approx Gross Internal Area **952 Sq Ft - 88.44 Sq M**

FOR ILLUSTRATIVE PURPOSES ONLY. NOT TO SCALE.