



Belsize Road, Swiss Cottage, NW6



An attractive and well maintained 3/4 bedroom town house, with parking for two cars and a charming walled patio garden, offering 1,828 sq ft / 169 sq m of flexibly arranged accommodation set over three floors.

The house features a lovely open plan kitchen/dining room as well as a first floor reception room and a large separate utility.

Swiss Cottage (Jubilee Line) underground station and the extensive shopping amenities of Finchley Road. (0.2 miles) are within a few minutes' walk.

Unfurnished

£1,495 per week

Accommodation and Amenities

- 3/4 Bedrooms • 2 Bathrooms (1 en Suite)
- Kitchen / Dining Room • Separate Utility Room
- Reception Room • Guest Cloakroom
- Bedroom 4/Family Room
- Off Street Parking for Two Cars
- Patio Garden
- EPC -E
- Camden Council Tax Band G











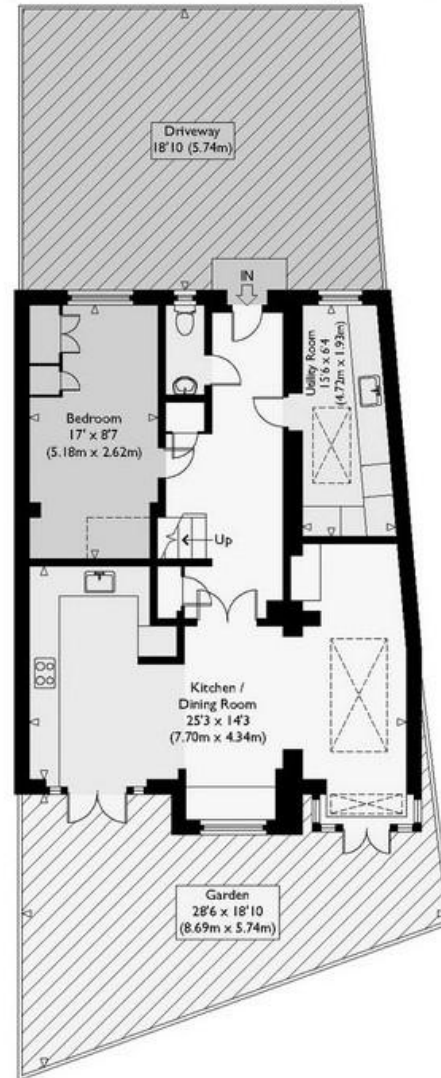




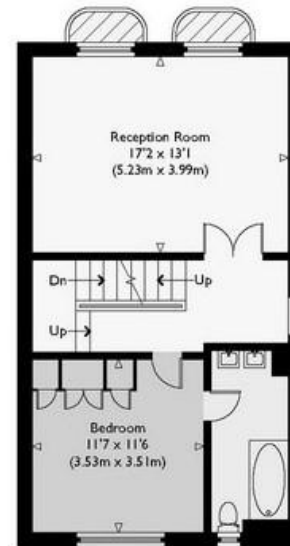


Belsize Road, NW6

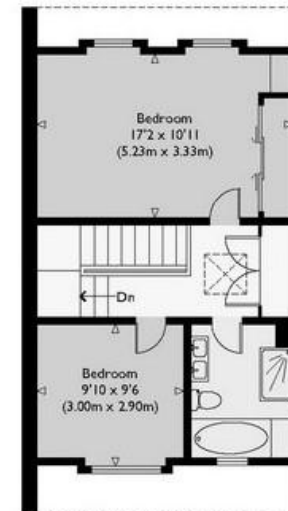
Approximate Gross Internal Floor Area : 1828 sq ft / 169.8 sq m



Ground Floor



First Floor



Second Floor

Illustration for identification purposes only, measurements are approximate, not to scale.

TENANTS FEES:

As well as paying the rent, tenants may also be required to make the following permitted payments:

Holding Deposit (maximum of 1 week's rent)

Security Deposit equivalent to 5 or 6 weeks' rent (AST tenancies)

Utilities, Communications services charges including TV licence, and Council Tax

Please contact us for information regarding any further Tenants permitted payments under the Tenant Misrepresentation Act 1967. This brochure and the descriptions and measurements herein do not constitute representation and whilst every effort has been made to ensure accuracy, this cannot be guaranteed.