



York Terrace West, Regent's Park, NW1











A 3rd floor (top floor) apartment providing 1,833 sq ft/ 170 sq m of accommodation with 5 elegant arch windows providing wonderful views of Regent's Park.

York Terrace West is positioned on the Marylebone side of Regent's Park a short walk from the boutiques, shops and restaurants of Marylebone High Street and in close proximity (approximately 1 mile walk) of the entertainment amenities of the West End. Nearby transport links include the well-connected Baker Street underground Station (Circle, Hammersmith & City, Bakerloo and Jubilee lines) which is approximately 0.1 mile walk and Marylebone Station (National Rail) which is approximately 0.5 mile walk.

York Terrace West is accessed via vehicular security gates and benefits from 24 hour portage/security. In addition to a designated and secure underground parking space there is additional on-street guest and resident parking available.

**ACCOMMODATION AND AMENITIES:** Three Bedrooms, Two Bathrooms, Double Reception Room, Kitchen/Breakfast room, utility room, 24 Hour Portage, Gated access to York Terrace West, Underground Parking Space, Communal Gardens, Basement Store Room

**GUIDE PRICE: £2,750,000**

**TENURE: LEASEHOLD 41  
YEARS REMAINING**

**SERVICE CHARGE: £26,000 per  
annum**

**GROUND RENT: £520 per  
annum**

**COUNCIL TAX BAND: H**

# ARLINGTON

RESIDENTIAL

8 Wellington Road, St. John's Wood, London NW8 9SP  
info@arlingtonresidential.com

+44 (0)20 7722 3322  
arlingtonresidential.com











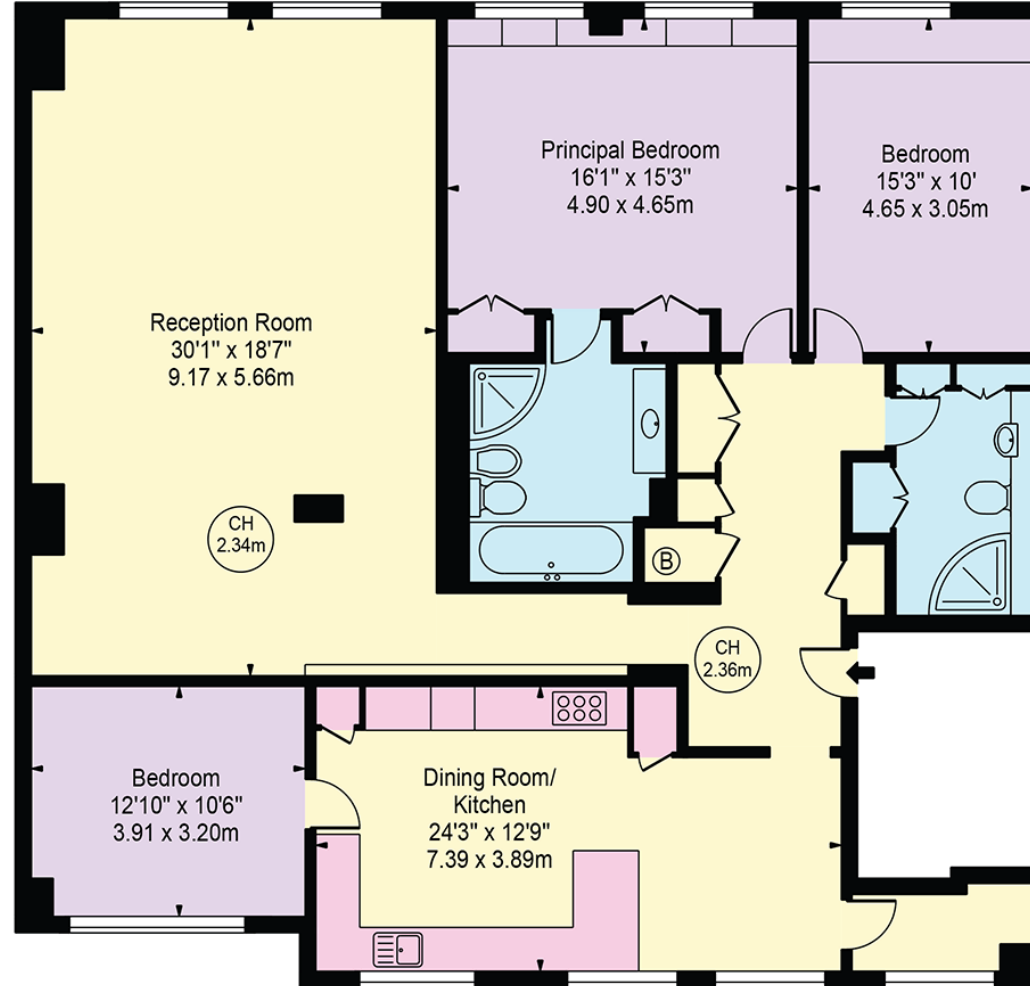






# York Terrace West

Approx. Gross Internal Area 1833 Sq Ft - 170.29 Sq M



Third Floor

For Illustration Purposes Only - Not To Scale

This floor plan should be used as a general outline for guidance only and does not constitute in whole or in part an offer or contract. Any intending purchaser or lessee should satisfy themselves by inspection, searches, enquiries and full survey as to the correctness of each statement. Any areas, measurements or distances quoted are approximate and should not be used to value a property or be the basis of any sale or let.

Copyright Morriarti Photography & Design LTD