



ST JOHN'S WOOD PARK, NW8 6NH

ST JOHN'S WOOD PARK, NW8 6NH

Set on the fourth floor of a sought after gated apartment complex with 24 hour concierge, communal gardens and parking, is this attractively presented 3 bedroom modern apartment with open plan living spaces, providing around 1134 sq ft / 105 sq m of accommodation. Boydell Court is located within just an easy walk of St Johns Wood High Street (about half a mile) as well as the extensive amenities of Finchley Road. The nearest tube station is Swiss Cottage Jubilee line (0.2 miles).

- 3 Bedrooms • 3 Bathrooms (2 en suite) • Reception Room • Open • Plan Kitchen • Lift • 24 Hour Concierge • Communal Gardens • Off Street Parking • EPC - D

EPC Rating: D Council Tax Band: F

£1,300 PER WEEK

UNFURNISHED

TENANTS FEES: As well as paying the rent, tenants may also be required to make the following permitted payments:

Holding Deposit (maximum of 1 week's rent)

Security Deposit equivalent to 5 or 6 weeks' rent (AST tenancies)

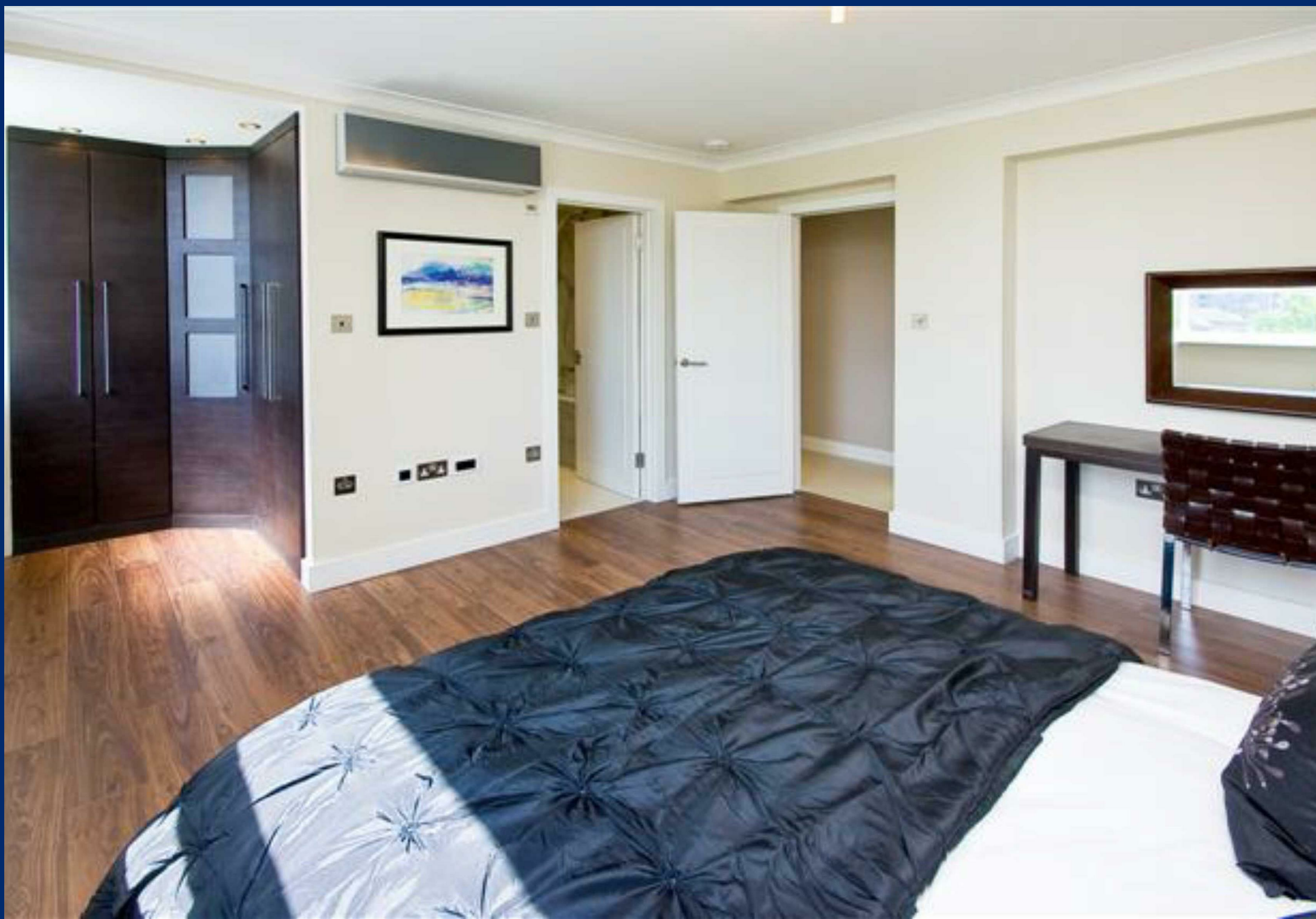
Utilities, Communications services charges including TV licence, and Council Tax

Please contact us for information regarding any further Tenants permitted payments under the Tenant Fees Act 2019

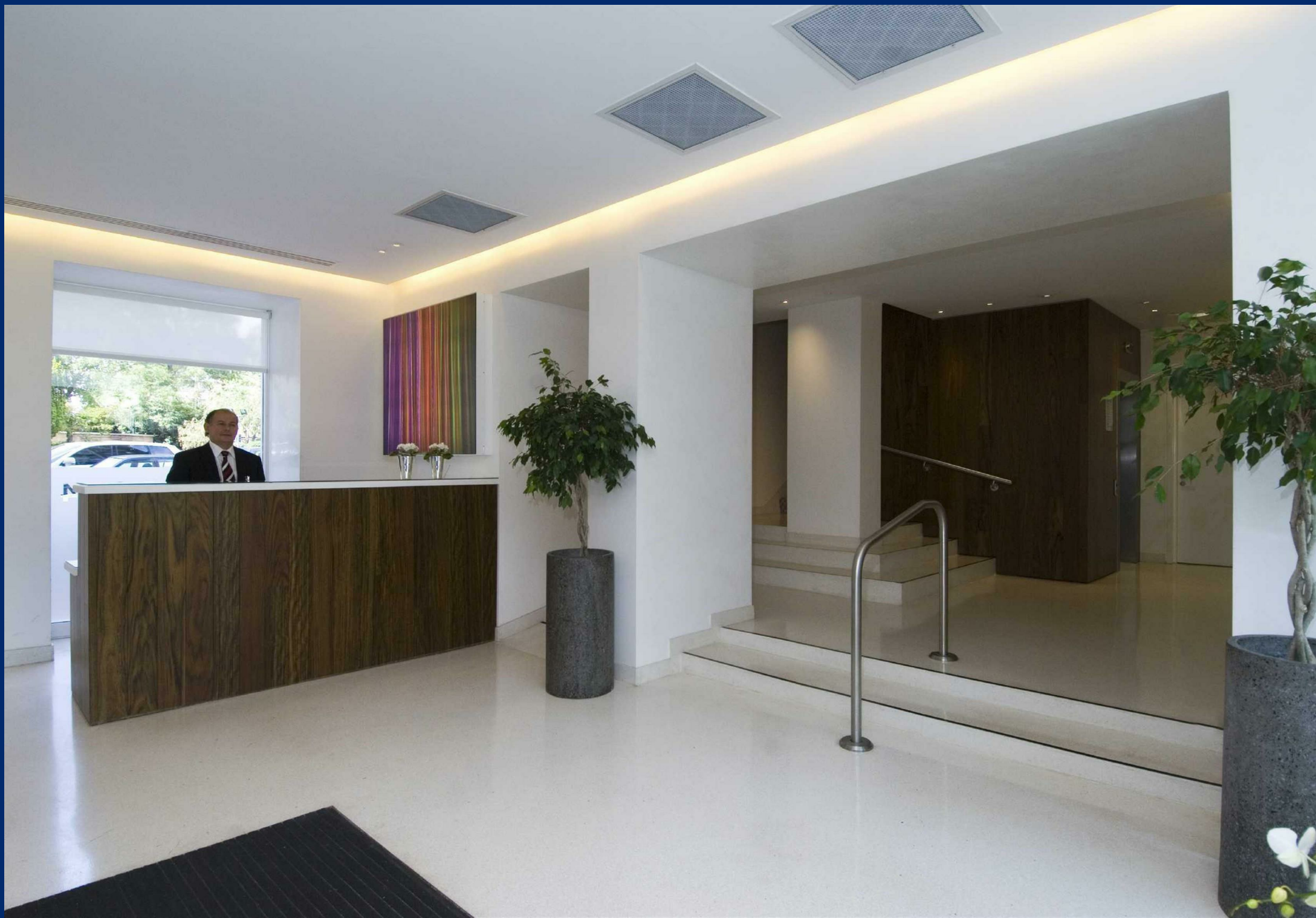
Misrepresentation Act 1967. This brochure and the descriptions and measurements herein do not constitute representation and whilst every effort has been made to ensure accuracy, this cannot be guaranteed.











Boydell Court
St.Johns Wood Park, NW8



Approx. Gross Floor Area = 105 sq.meters • 1134 sq.feet



FOURTH FLOOR

For illustrative purposes only. Not to scale. Prepared by Swan Photography 01435 863908