

The Bishops Avenue, London N2



A spectacular interior designed penthouse apartment situated on the second floor of a most exclusive luxury development on The Bishops Avenue. Stunning penthouse apartment of approximately 5,138 sq ft on the exclusive The Bishops Avenue. This apartment has been beautifully appointed throughout, offering three bedrooms with en suite bathrooms and dressing rooms, a reception room with a large terrace, kitchen, dining room, study and gallery. This apartment also has state-of-the-art facilities including 24 hour concierge luxury indoor swimming pool, gym, sauna, individual security systems, CCTV and secure underground parking. The Heath is approximately 1km, Highgate Village is within 2.7km and East Finchley Underground Station is approximately 950m away.

3 Bedrooms : 2 En Suite Bathrooms : En Suite Shower Room : Reception Room :
Dining Room : Study : Kitchen : Gallery : Utility Room : 2 Guest WCs : Lift : Terrace :
24 Hour Concierge : Underground Parking : EPC Rating B

POA



Terms and Conditions

Price

POA

Tenure

Leasehold, expires 01/04/3007

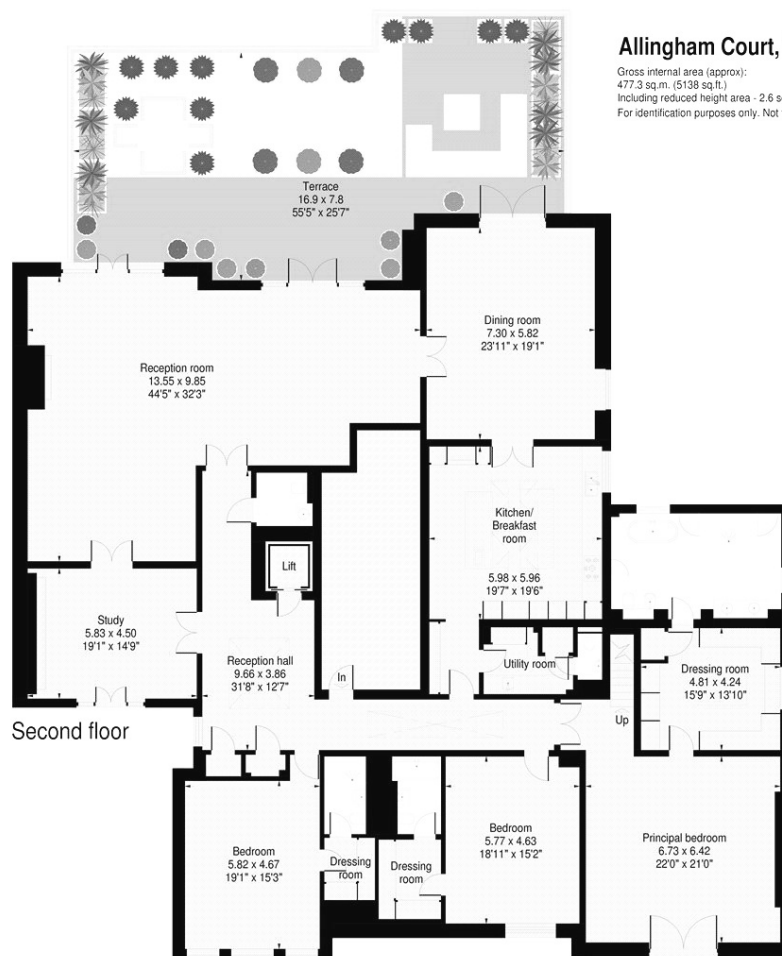
Service Charge:

£61,906

Disclaimer

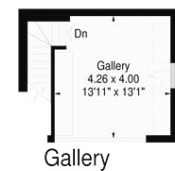
These particulars have been produced as a general guide for this property only and no other purpose. They are not an offer or contract. You should not rely on statements in these particulars or by word of mouth or in writing as being factually accurate about the property, its condition or its value. Neither any primary agent or joint agent has any authority to make or give any representations or warranties in relation to the property, and accordingly any information given is entirely without responsibility on the part of the agents or seller(s).

The photographs show only certain parts of the property as they appeared at the time they were taken. Any areas, measurements and distances given are approximate only. Any reference to alterations to, or use of, any part of the property does not mean that any necessary planning, building regulations or other consent has been obtained nor have any services, equipment or facilities been tested. A buyer should satisfy themselves by inspection or otherwise. The VAT position relating to the property may change without notice. Please contact us for further information regarding the property redress scheme which we are a member of.



Allingham Court, The Bishops Avenue, London N2

Gross internal area (approx):
477.3 sq.m. (5138 sq.ft.)
Including reduced height area - 2.6 sq.m. (28 sq.ft.)
For identification purposes only. Not to scale.



Energy Efficiency Rating

	Current	Potential
<i>Very energy efficient - lower running costs</i> <div> <div>(92+) A</div> <div>(81-91) B</div> <div>(69-80) C</div> <div>(55-68) D</div> <div>(39-54) E</div> <div>(21-38) F</div> <div>(1-20) G</div> </div>		
	81	82
<i>Not energy efficient - higher running costs</i> England, Scotland & Wales	EU Directive 2002/91/EC	