



BOYDELL COURT, NW8 6NL

# BOYDELL COURT, NW8 6NL

A well appointed luxury 3 bedroomed apartment located on the fourth floor of this smart gated complex set in communal gardens with 24 hour concierge and parking, The flat has been attractively designed with open plan living spaces. The shopping and transport amenities of both Swiss Cottage (0.2 miles) and St John's Wood (0.6 miles).

- 3 Bedrooms • 3 Bathrooms (1 en Suite) • Double Reception Room • Kitchen • Lift • 24 Hour Concierge • Communal Gardens • Communal Central Heating and Hot Water • Off Street Parking • EPC Rating - C

EPC Rating: C Council Tax Band: F

**£1,300 PER WEEK**

**FURNISHED/UNFURNISHED**

**TENANTS FEES:** As well as paying the rent, tenants may also be required to make the following permitted payments:

Holding Deposit (maximum of 1 week's rent)

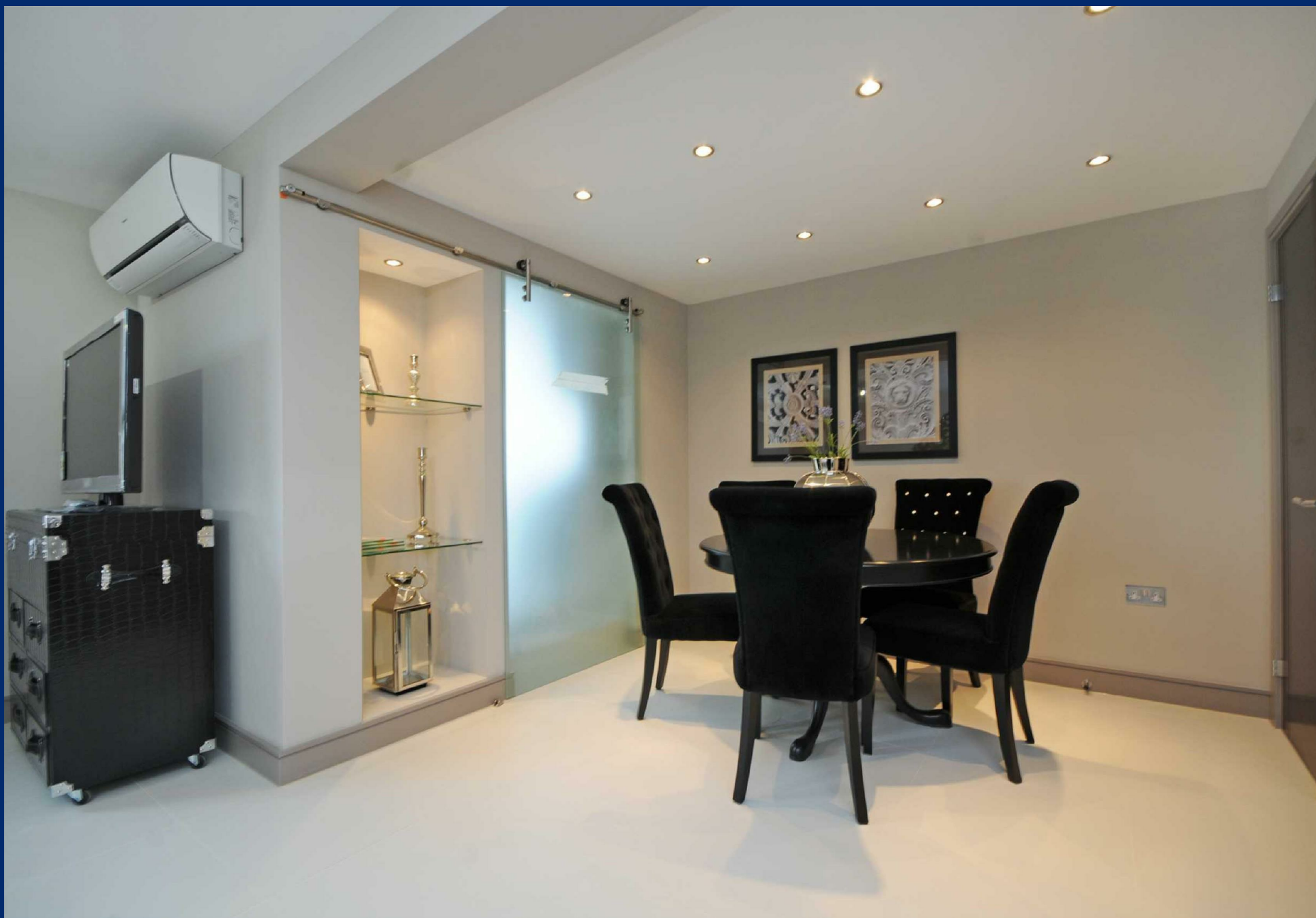
Security Deposit equivalent to 5 or 6 weeks' rent (AST tenancies)

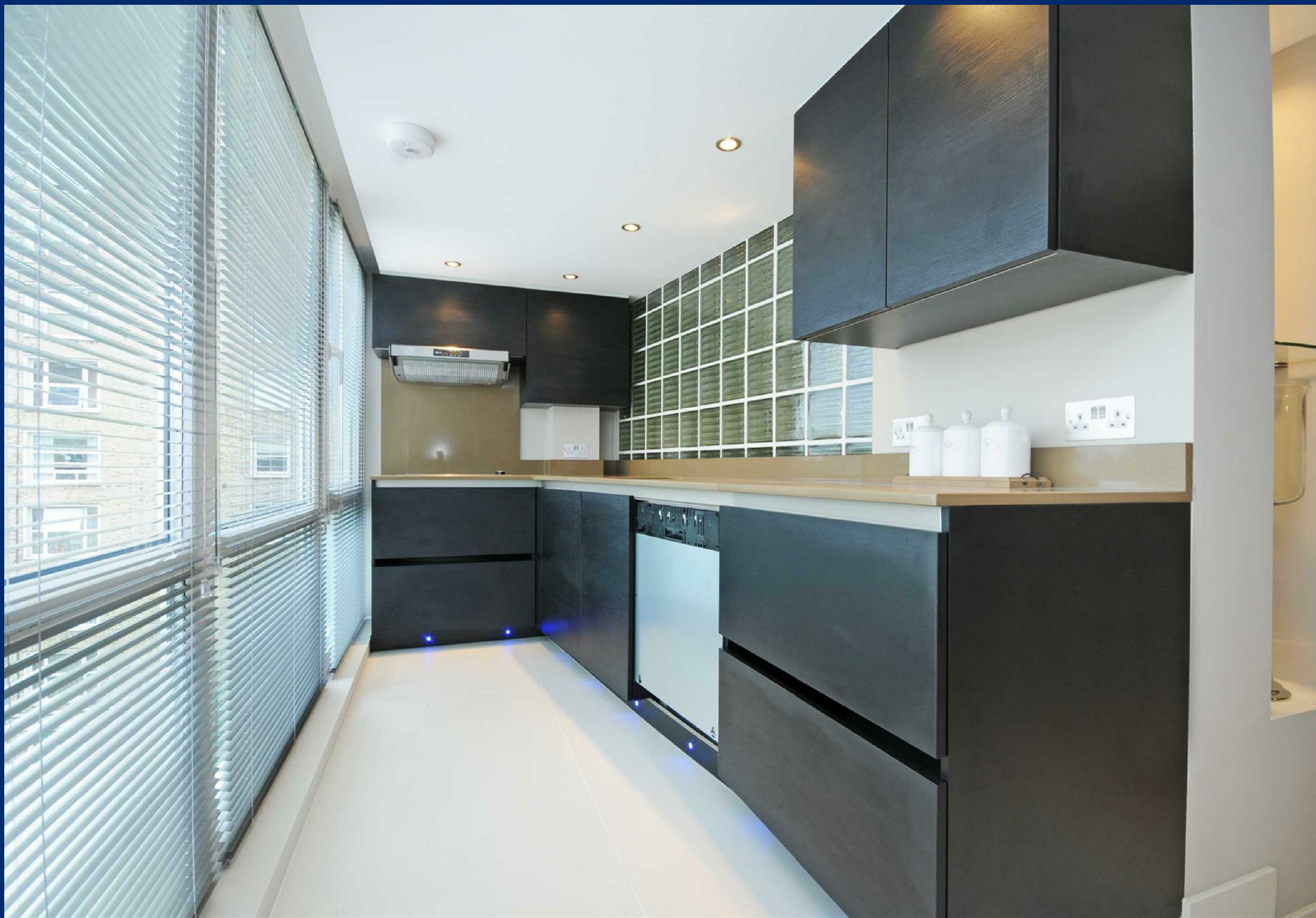
Utilities, Communications services charges including TV licence, and Council Tax

Please contact us for information regarding any further Tenants permitted payments under the Tenant Fees Act 2019

Misrepresentation Act 1967. This brochure and the descriptions and measurements herein do not constitute representation and whilst every effort has been made to ensure accuracy, this cannot be guaranteed.















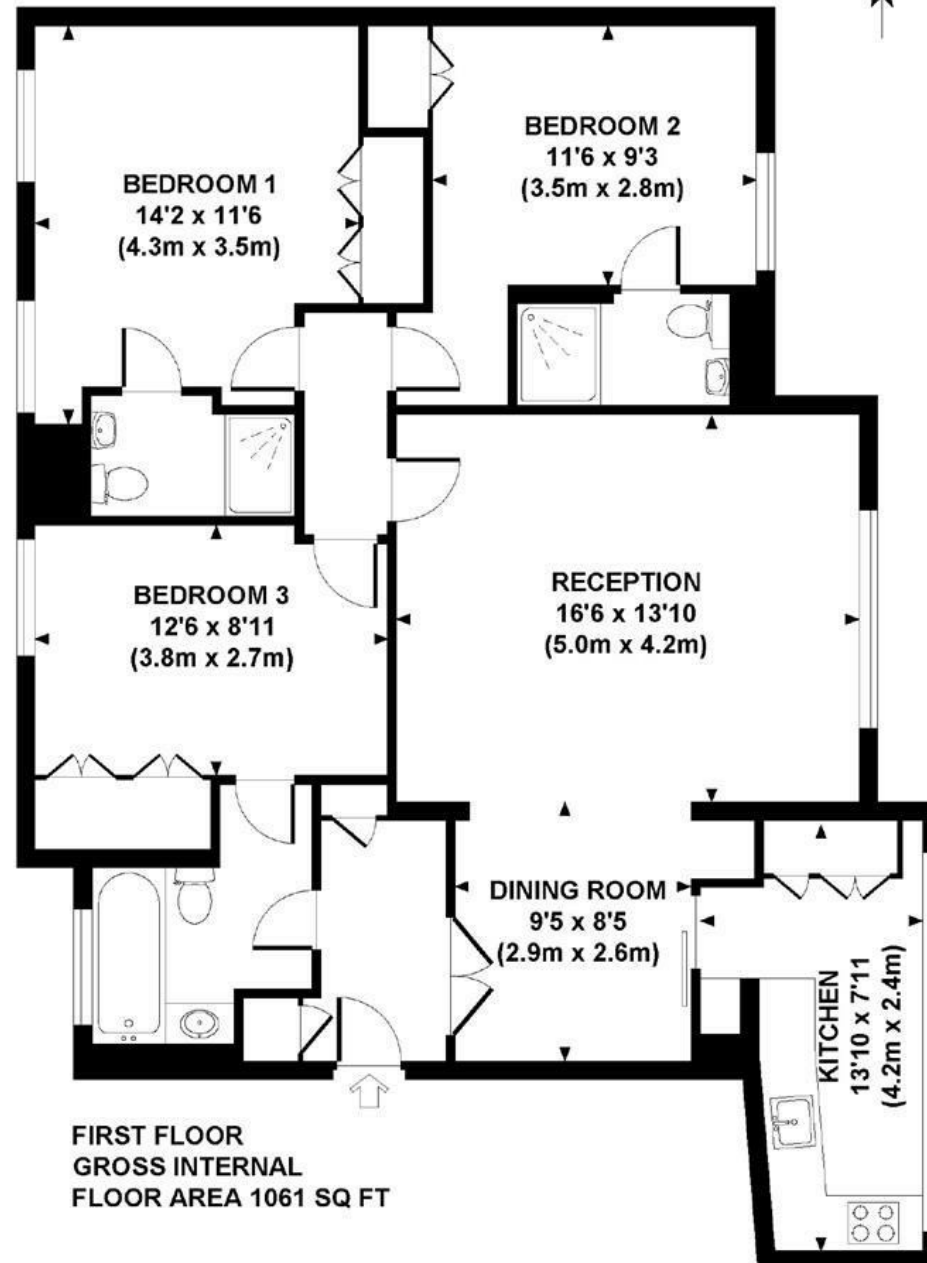






# BOYDELL COURT

Approximate Gross Internal Area 1061 sq ft / 99 sq m



Although every attempt has been made to ensure accuracy, all measurements are approximate.  
The floor plan's for illustrative purposes only and not to scale. Measured in accordance to RICS standards.  
DE-PHOTOGRAPHY.NET