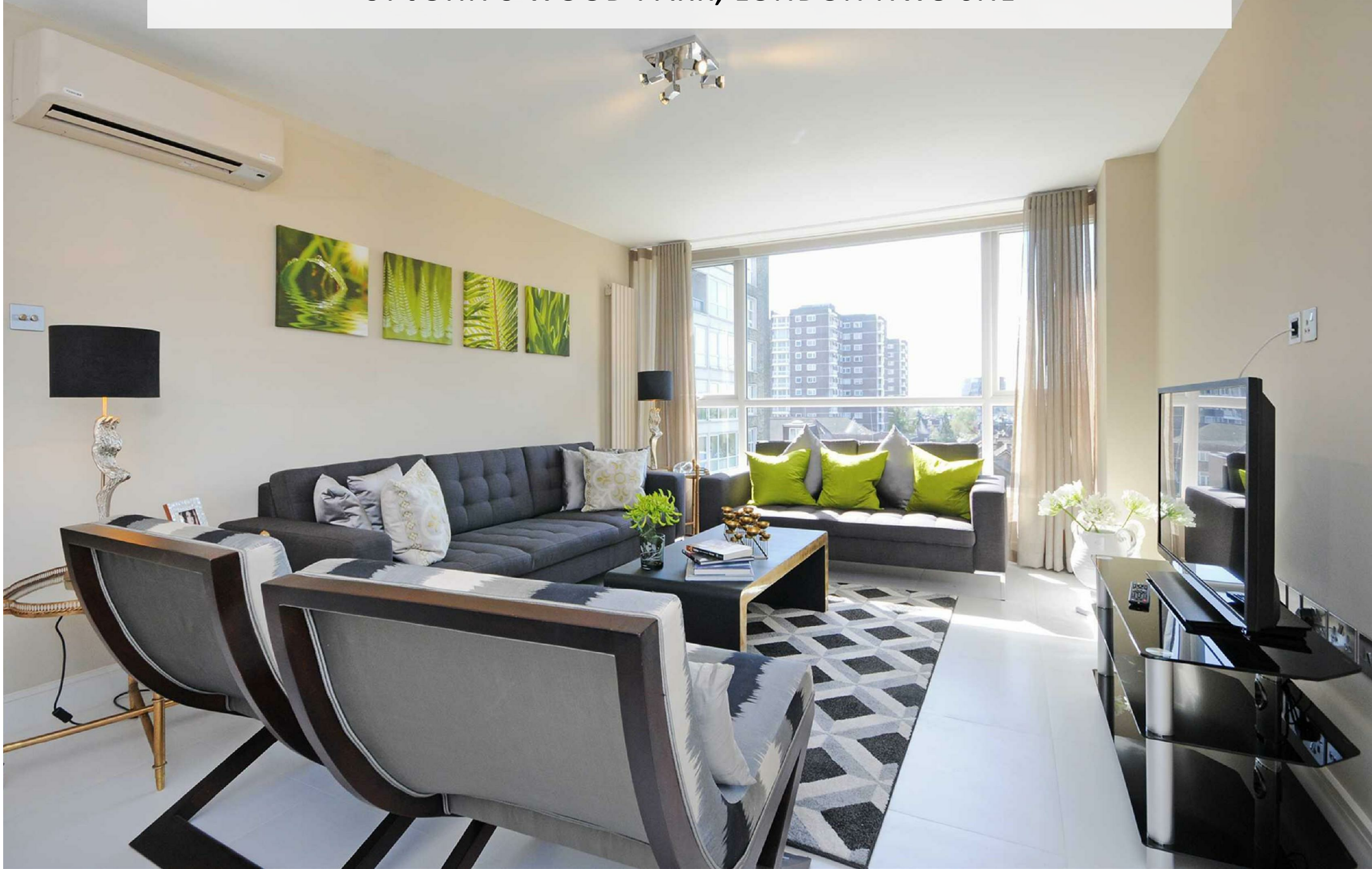


ST JOHN'S WOOD PARK, LONDON NW8 6NL



ST JOHN'S WOOD PARK, LONDON NW8 6NL

An attractive, bright modern apartment on the 4th floor of this sought after gated apartment complex with 24 hour concierge and off street parking. The flat offers three double bedrooms and is presented in a fresh contemporary style. Boydell Court is set in landscaped gardens and the flat benefits from on-site property management plus communal heating and hot water. Swiss Cottage (Jubilee line) tube) is approximately 0.2 miles away, whilst St John's Wood High Street's boutiques and cafés and the American School are just over half a mile away.

- 3 BEDROOMS • 2 EN SUITE BATHROOMS • SHOWER ROOM • DOUBLE RECEPTION ROOM • OPEN PLAN KITCHEN • LIFT • 24 HOUR CONCIERGE/PORTER • OFF STREET PARKING SPACE • COMMUNAL HEATING & HOT WATER • GATED COMPLEX

EPC Rating: D Council Tax Band: F

£1,300 PER WEEK
FURNISHED

TENANTS FEES: As well as paying the rent, tenants may also be required to make the following permitted payments:

Holding Deposit (maximum of 1 week's rent)

Security Deposit equivalent to 5 or 6 weeks' rent (AST tenancies)

Utilities, Communications services charges including TV licence, and Council Tax

Misrepresentation Act 1967. This brochure and the descriptions and measurements herein do not constitute representation and whilst every effort has been made to ensure accuracy, this cannot be guaranteed.

ARLINGTON

RESIDENTIAL

020 7722 3322

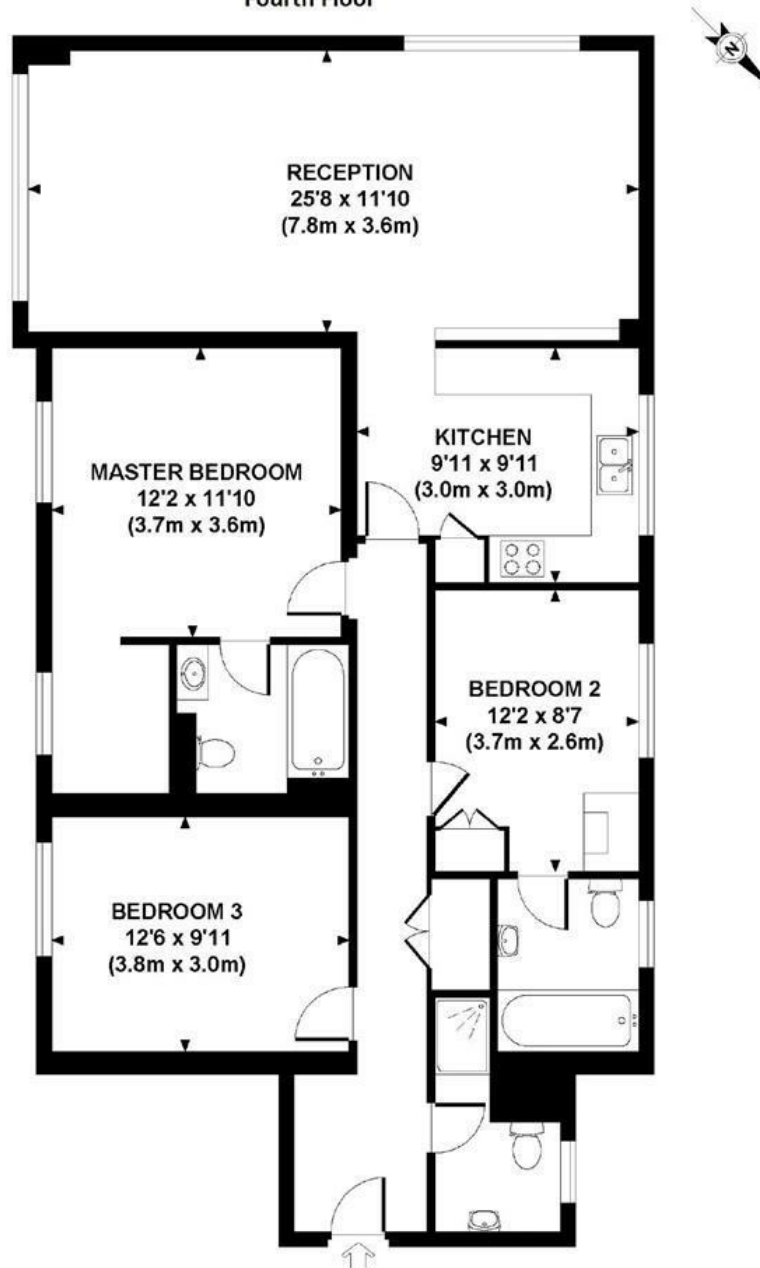
arlingtonresidential.com







41 Boydell Court
Fourth Floor



APPROXIMATE GROSS INTERNAL AREA 1119 SQ FT / 104 SQ M

Although every attempt has been made to ensure accuracy, all measurements are approximate.
The floor plan's for illustrative purposes only and not to scale. Measured in accordance to RICS standards.
DE-PHOTOGRAPHY.NET