

ORDNANCE HILL, ST JOHN'S WOOD NW8 6PX



ORDNANCE HILL, ST JOHN'S WOOD NW8 6PX

This charming end-of-terrace Georgian house has recently undergone a full refurbishment. Situated in the heart of St John's Wood, this delightful house (approximately 1810 sq ft / 168 sq m) is arranged over four floors and offers a large double front and rear aspect reception room that leads onto a private garden, a separate integrated modern kitchen which leads on to the dining room, four double bedrooms, two bathrooms (one en-suite) and a guest cloakroom. Ordnance Hill is a sought after road located close to St John's Wood High Street and within 0.3 miles of St John's Wood Jubilee Line tube station. The house is situated adjacent to Robinsfield Infant School. Available from early June, either furnished or unfurnished.

• 4 Bedrooms • 2 Bathrooms (1 en suite) • Double Reception Room • Separate Dining Room • Guest Cloakroom • Modern Integrated Kitchen • Private Rear Garden • Westminster Council Tax Band G • EPC

Rating D

EPC Rating: D Council Tax Band: G

£2,600 PER WEEK

FURNISHED/UNFURNISHED

TENANTS FEES: As well as paying the rent, tenants may also be required to make the following permitted payments:

Holding Deposit (maximum of 1 week's rent)

Security Deposit equivalent to 5 or 6 weeks' rent (AST tenancies)

Utilities, Communications services charges including TV licence, and Council Tax

Misrepresentation Act 1967. This brochure and the descriptions and measurements herein do not constitute representation and whilst every effort has been made to ensure accuracy, this cannot be guaranteed.

ARLINGTON

RESIDENTIAL

020 7722 3322

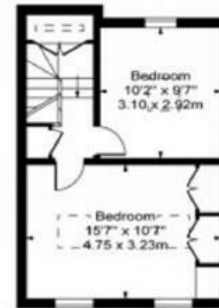
arlingtonresidential.com



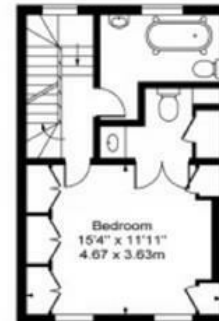




Ordnance Hill, NW8



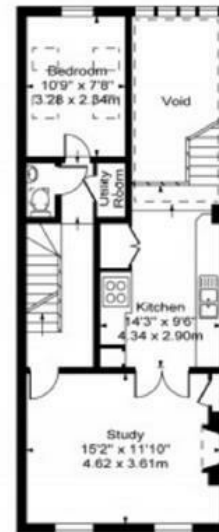
Third Floor



Second Floor



Ground Floor



First Floor

Approx Gross Internal Area 1810 Sq Ft - 168.14 Sq M
(Excluding Shed, Garden House & Void)