



# An Elegant And Private Residence

Courtenay Avenue, Highgate, London, N6





## An Elegant And Private Residence

Courtenay Avenue, Highgate, London, N6

**Guide Price £15,999,999**

One of Kenwood's most distinguished and elegant residences, set in this renowned private road protected by CCTV and a 24 hour guard operated security gate.

This magnificent house offers over 11,300 sq.ft. of well-planned accommodation, set in over half an acre of grounds including an indoor swimming pool and leisure complex with gymnasium / games room and features a wonderful 165' landscaped west facing garden. This premium plot extends to 0.54 acres. The property has recently undergone a substantial programme of refurbishment and updating, and is presented in excellent decorative order.



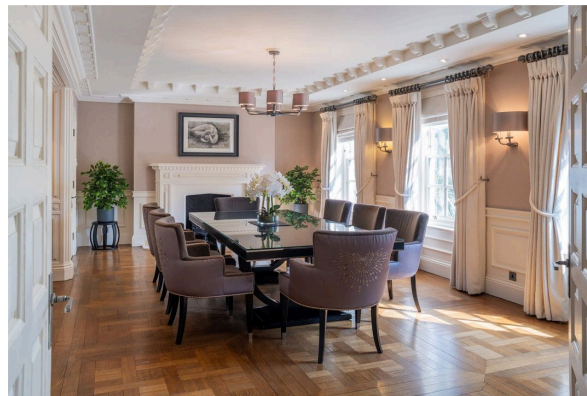
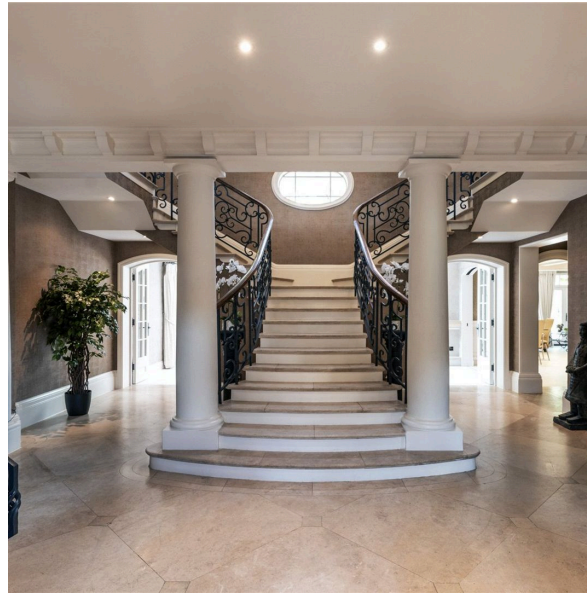
# ARLINGTON

RESIDENTIAL



The property comprises a grand reception hall, 31 x 27 drawing room, 20 x 18 conservatory style family room, dining room, paneled study, custom built kitchen/breakfast room, principal bedroom suite with dressing room and bathroom, 6 further bedroom suites.

This beautiful home also benefits from a leisure suite with large pool, gym/games room, sauna, a sweeping carriage driveway, double garage and a magnificent landscaped gardens.



Courtenay Avenue is a private, gated road located enjoying 24 hour security, located off Hampstead Lane in the heart of Kenwood, very close to The Bishop's Avenue and Hampstead Heath. London's West End is approximately 3.5 miles distant.













# Location

The M1 with routes north out of London is approximately 1.5 miles distant and the A406 (North Circular Road) is less than a mile away with connections to both the A4 and A40 (M40) affording access to London's Heathrow airport.





# Floorplans

Approximate Gross Internal Floor Area 11,733 sq ft





# Key Information

Council Tax  
Band = H

Services & Additional Information

EPC  
EPC Rating = C

PROPERTY

