



COURT CLOSE, NW8 6NN

COURT CLOSE, NW8 6NN

A beautifully presented 4 bedroom contemporary townhouse (approx 1895 sq ft / 176 sq m) in a private gated residential complex. The house has been extended to provide a lovely family home over three floors with open-living areas leading onto a landscaped south facing private garden. Court Close is set in communal gardens with 24 hour concierge and unreserved off street parking.

The amenities of both St John's Wood and Finchley Road are within proximity. The closest underground stations are Swiss Cottage (Jubilee Line) 0.2 miles and St John's Wood (Jubilee line) 0.5 miles.

- 4 Bedrooms • 4 Bathrooms (1 en Suite) • Double Reception Room • Open Plan Kitchen • Study • Private Garden with Garden Room • Off Street Parking • 24 Hour Porters/Security • Communal Central Heating & Hot Water • EPC Rating E

EPC Rating: E Council Tax Band: G

£2,950 PER WEEK

FURNISHED/UNFURNISHED

TENANTS FEES: As well as paying the rent, tenants may also be required to make the following permitted payments:

Holding Deposit (maximum of 1 week's rent)

Security Deposit equivalent to 5 or 6 weeks' rent (AST tenancies)

Utilities, Communications services charges including TV licence, and Council Tax

Please contact us for information regarding any further Tenants permitted payments under the Tenant Fees Act 2019

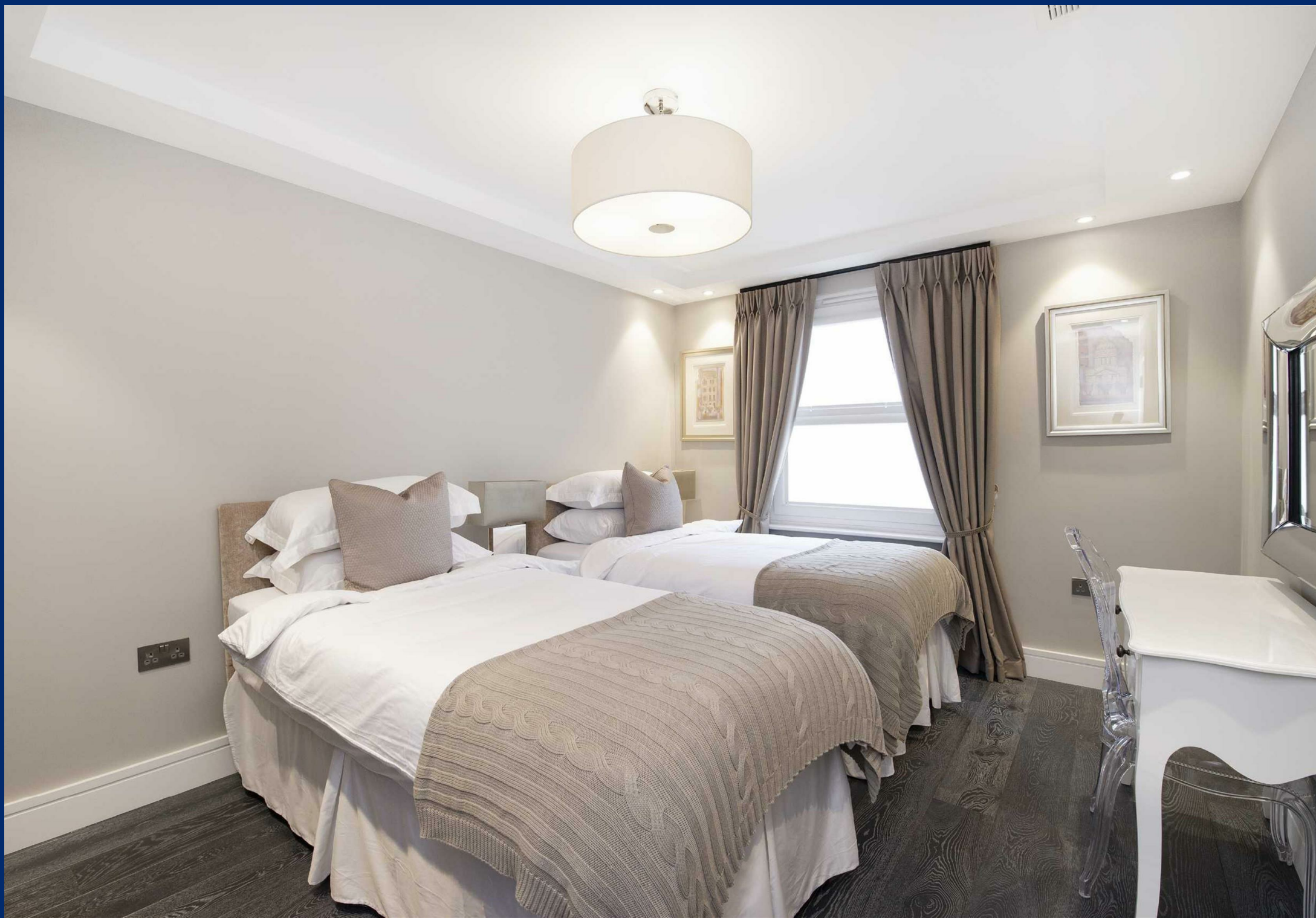
Misrepresentation Act 1967. This brochure and the descriptions and measurements herein do not constitute representation and whilst every effort has been made to ensure accuracy, this cannot be guaranteed.





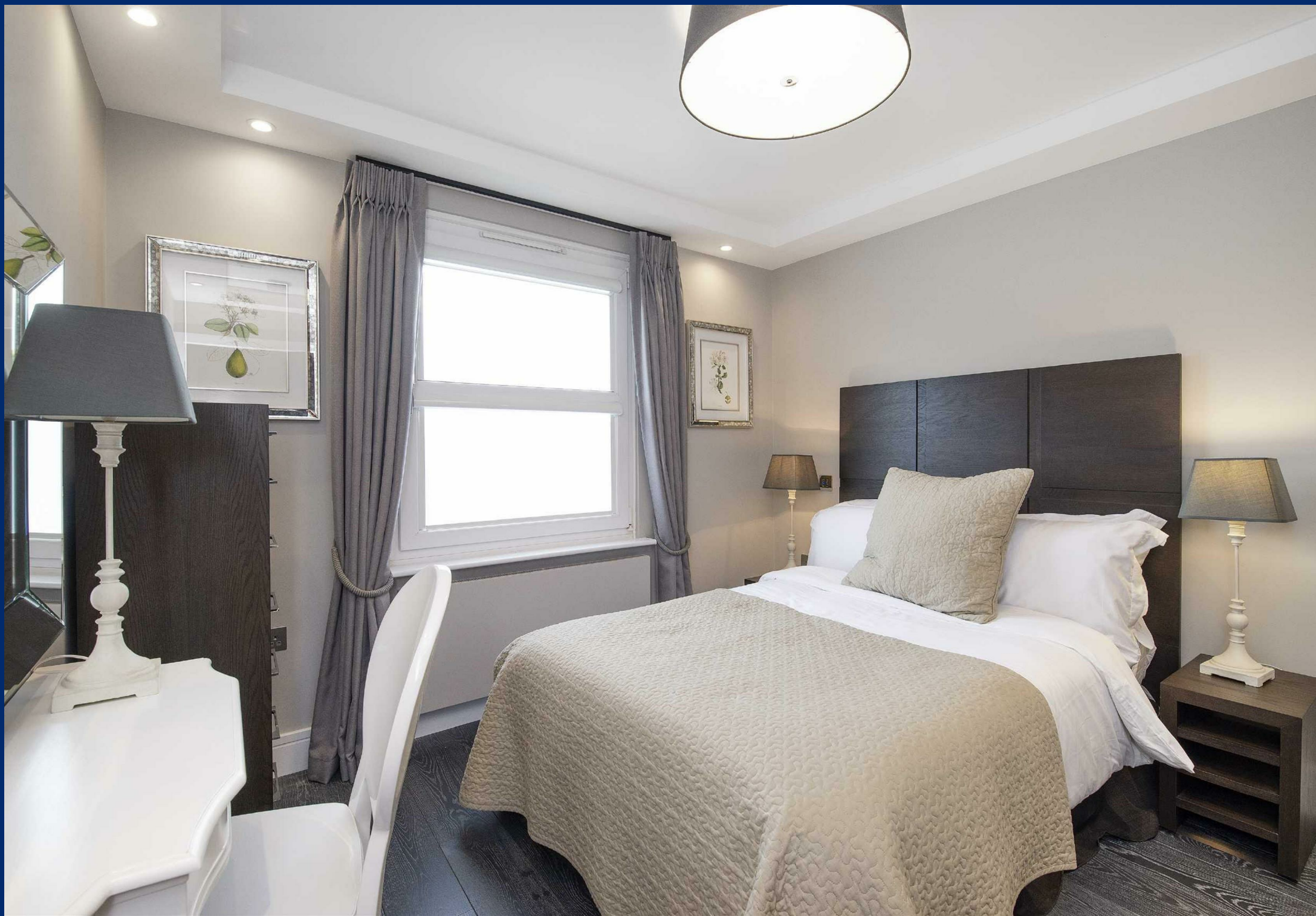


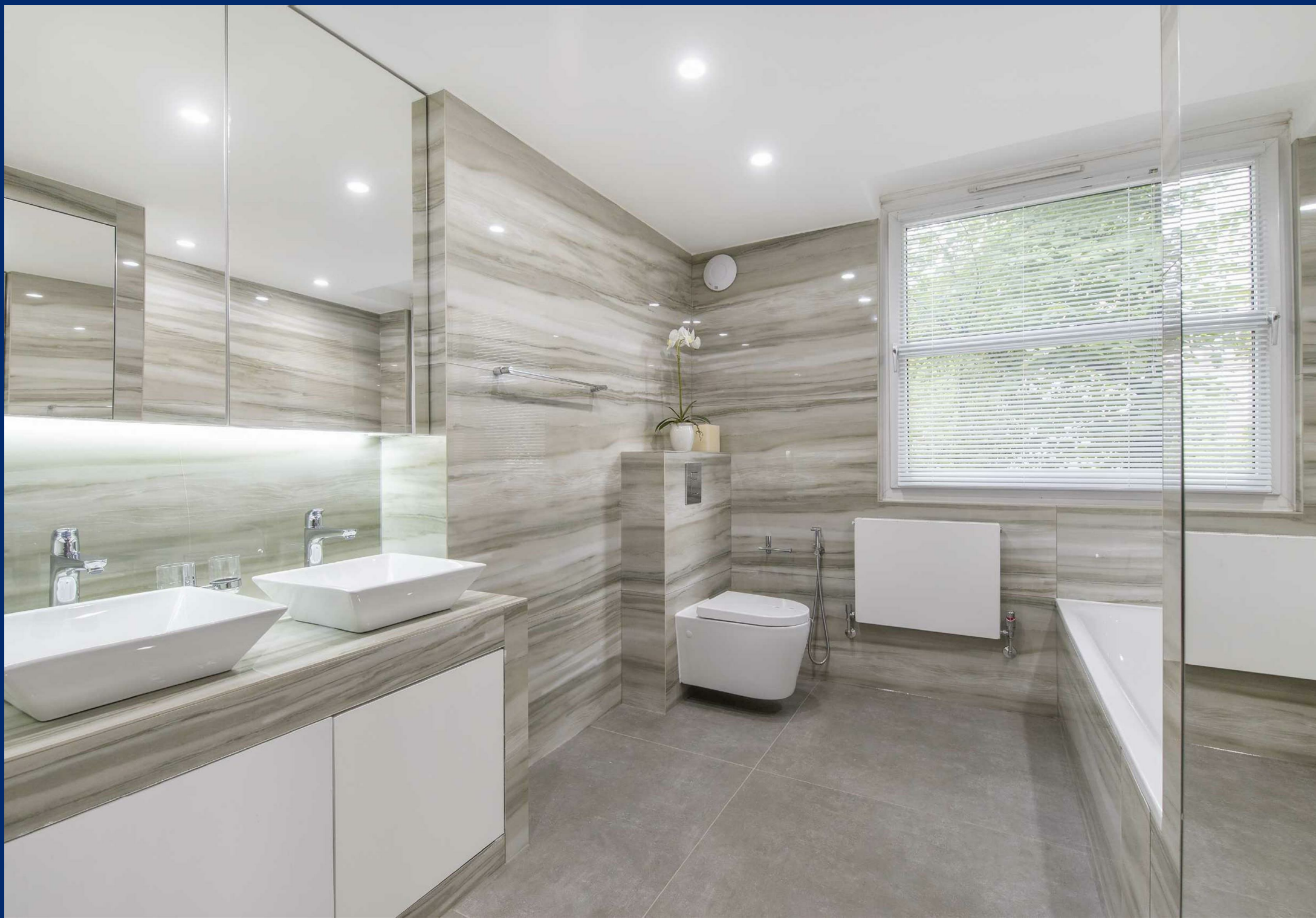


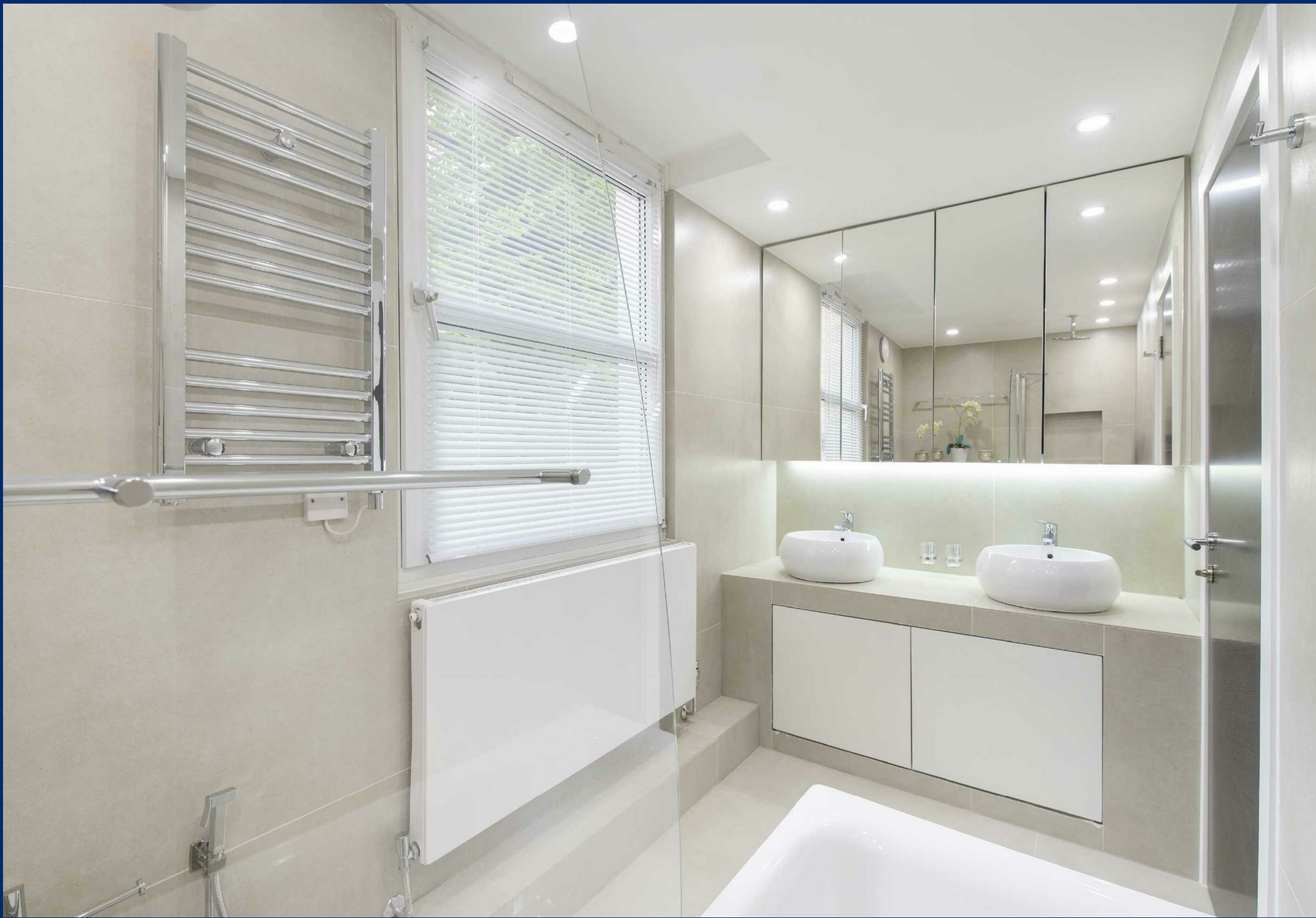








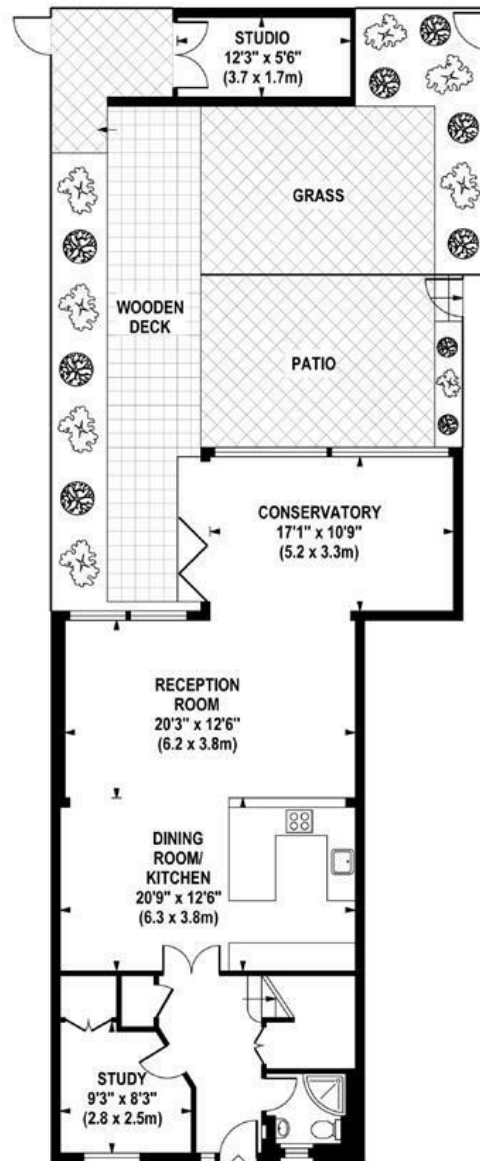




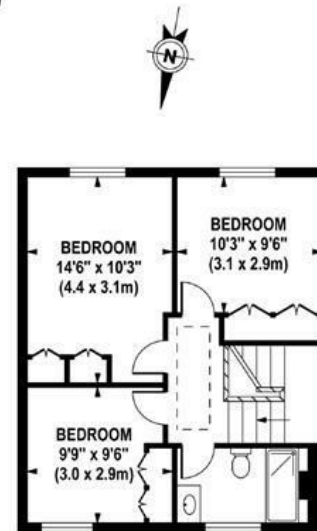
COURT HOUSE

Approximate Gross Internal Area 2024 sq ft / 188.0 sq m
(Including Studio)

Approximate Gross Internal Area 1956 sq ft / 181.7 sq m
(Excluding Studio)



GROUND FLOOR
GROSS INTERNAL
FLOOR AREA 952 SQ FT



SECOND FLOOR
GROSS INTERNAL
FLOOR AREA 502 SQ FT



FIRST FLOOR
GROSS INTERNAL
FLOOR AREA 502 SQ FT

Although every attempt has been made to ensure accuracy, all measurements are approximate.
The floor plan's for illustrative purposes only and not to scale. Measured in accordance to RICS standards.

DE-PHOTOGRAPHY.NET