



BOYDELL COURT, NW8 6NG

# BOYDELL COURT, NW8 6NG

Set on the first floor of a sought after portered building, an incredibly spacious, newly refurbished interior designed apartment of approximately 1,181 sq ft/168.2 sq m, located in the heart of St John's Wood. The property has wooden flooring throughout and a parking space available to rent by separate negotiation.

Boydell Court is located close to the local amenities and transport links of Swiss Cottage and St John's Wood.

- Reception • Kitchen • Three Bedrooms • Three Bathrooms • 24 Hours Concierge • Lift • Wood Floors Throughout • EPC Rating - D

EPC Rating: D Council Tax Band:

**£1,300 PER WEEK**

**FURNISHED/UNFURNISHED**

**TENANTS FEES:** As well as paying the rent, tenants may also be required to make the following permitted payments:

Holding Deposit (maximum of 1 week's rent)

Security Deposit equivalent to 5 or 6 weeks' rent (AST tenancies)

Utilities, Communications services charges including TV licence, and Council Tax

Please contact us for information regarding any further Tenants permitted payments under the Tenant Fees Act 2019

Misrepresentation Act 1967. This brochure and the descriptions and measurements herein do not constitute representation and whilst every effort has been made to ensure accuracy, this cannot be guaranteed.





























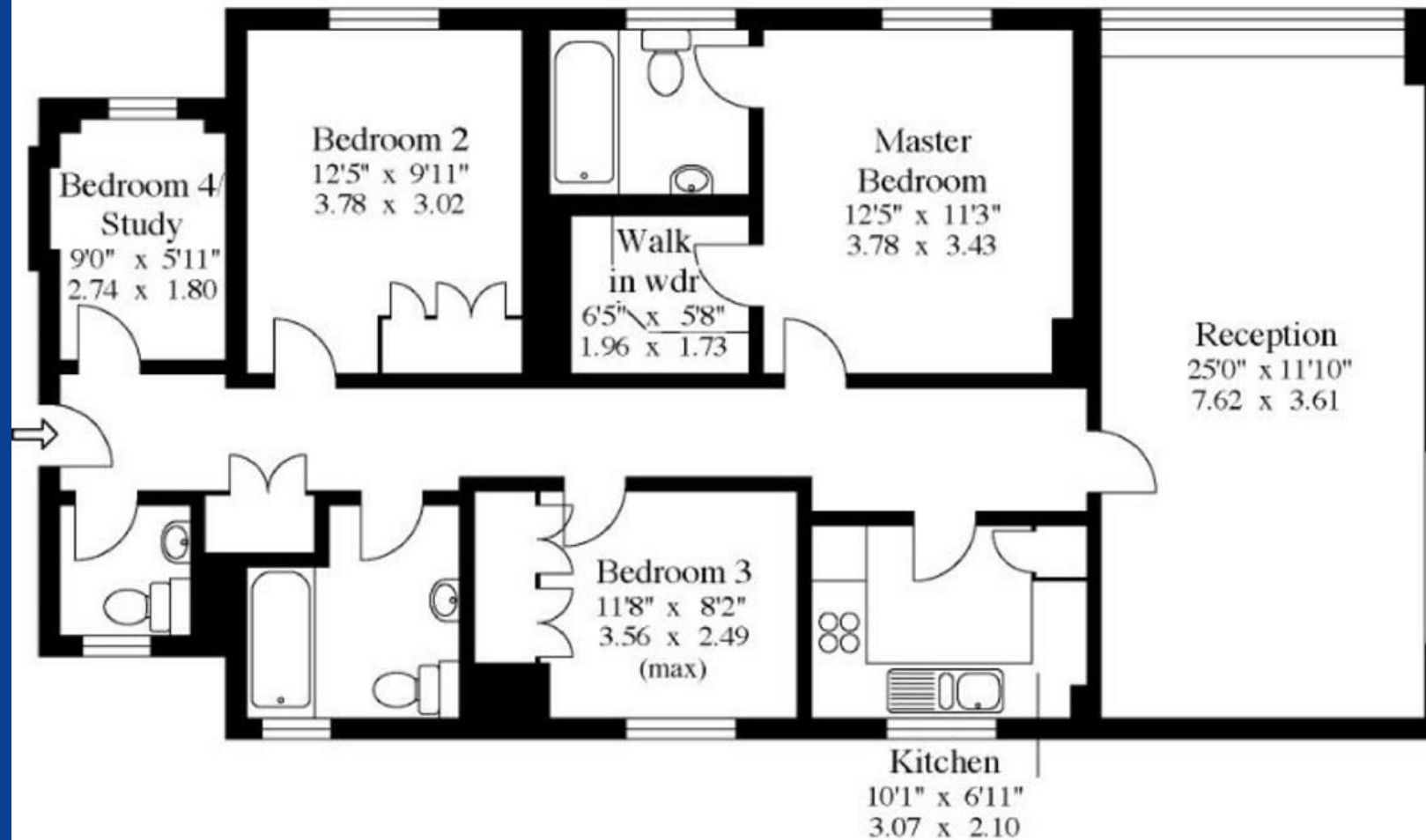




60 Boydell Court,  
St Johns Wood Park,  
NW8.



Approx Gross Floor Area = 1181 Sq. Feet  
= 168.2 Sq. Metres



First Floor

For illustrative purposes only. Not to scale.  
Prepared by Making Plans Ltd. Tel : 0113 258 7607