



HEATH DRIVE, HAMPSTEAD, NW3 7SB



# HEATH DRIVE, HAMPSTEAD, NW3 7SB

An impressive detached double fronted family home situated on one of Hampstead's premier roads. This imposing red brick house is set back from the road behind tall hedges with a gated carriage driveway. On the ground floor is a modern fully fitted integrated kitchen breakfast room with direct access to mature manicured gardens, separate utility room, reception room also with direct access to the garden, separate dining room, library/drawing room and a good size home office. On the first floor is the principal bedroom with a separate dressing area which leads on to the ensuite bathroom, three further double bedrooms and two shower rooms both of which are ensuite. On the second floor, three double bedrooms and a further two bathrooms one of which is ensuite. The house also benefits from a garage, large loft rooms and the added benefit of a large cellar which are all ideal for storage .

\*Pictures are from when the house was previously furnished\*

- DETACHED DOUBLE FRONTED RED BRICK HOUSE • SEVEN BEDROOMS • FIVE BATHROOMS • FOUR RECEPTION ROOMS • KITCHEN BREAKFAST ROOM • CARRIAGE DRIVEWAY • MATURE MANICURED GARDENS

EPC Rating: D Council Tax Band: H

**£9,000 PER WEEK**

**PART FURNISHED**

**TENANTS FEES:** As well as paying the rent, tenants may also be required to make the following permitted payments:

Holding Deposit (maximum of 1 week's rent)

Security Deposit equivalent to 5 or 6 weeks' rent (AST tenancies)

Utilities, Communications services charges including TV licence, and Council Tax

Please contact us for information regarding any further Tenants permitted payments under the Tenant Fees Act 2019

Misrepresentation Act 1967. This brochure and the descriptions and measurements herein do not constitute representation and whilst every effort has been made to ensure accuracy, this cannot be guaranteed.













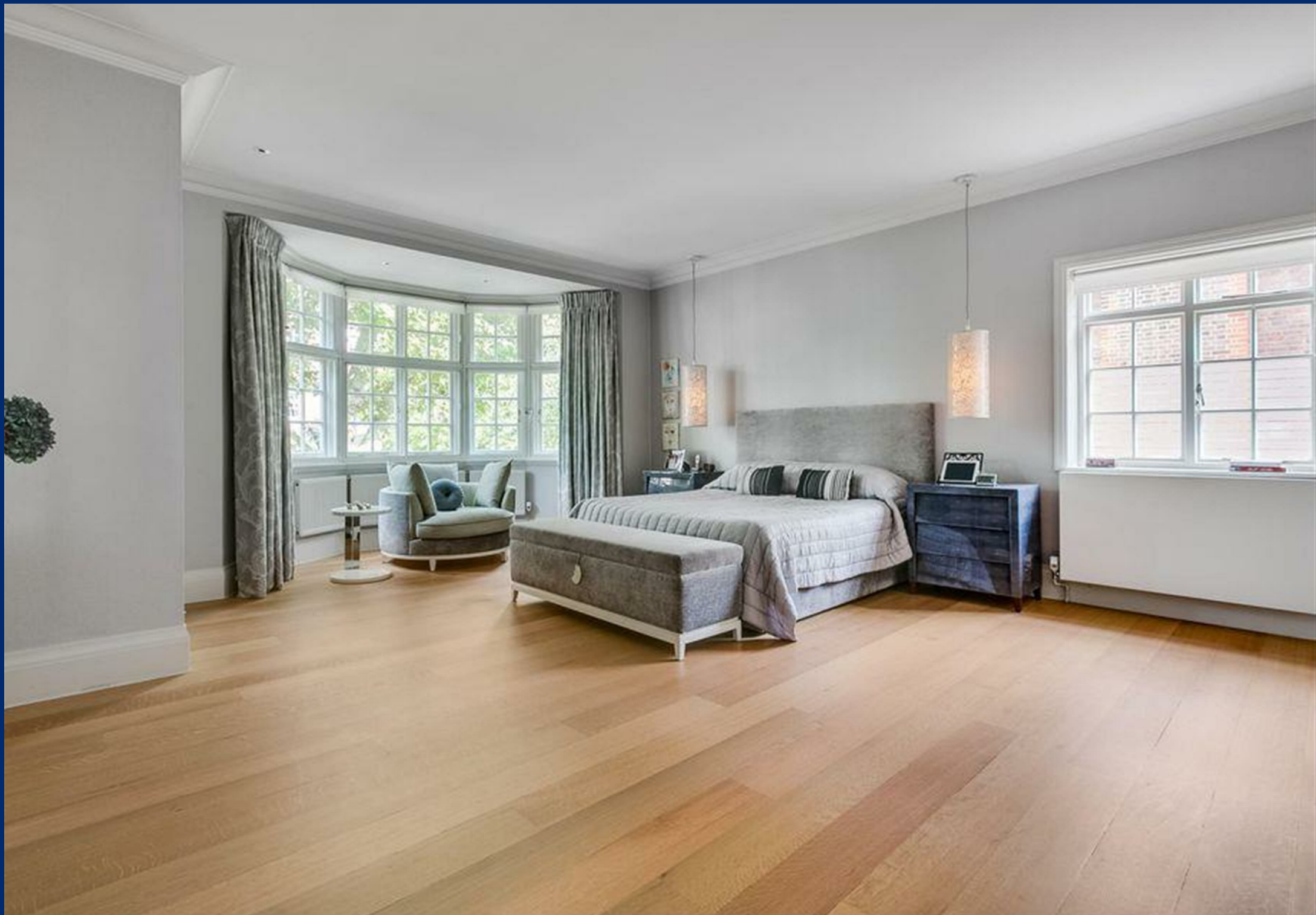
























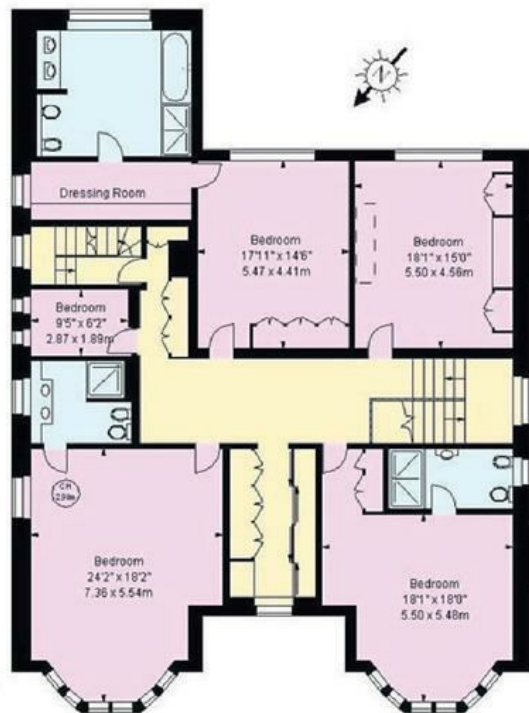




Ground Floor

**Approximate Gross Internal Floor Area**  
**699.44 sq m / 7529 sq ft**

This plan is for guidance only and must not be relied upon as a statement of fact. Attention is drawn to the Important Notice on the last page of the text of the Particulars



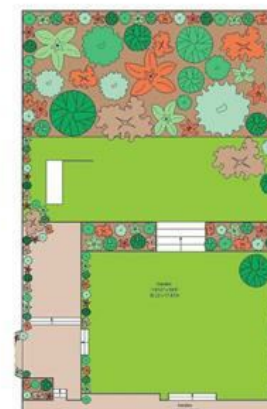
First Floor



Second Floor



Lower Ground Floor



Garden