

FITZJOHNS AVENUE, HAMPSTEAD NW3 6PH



FITZJOHNS AVENUE, HAMPSTEAD NW3 6PH

This beautifully presented and elegant flat (1380 sq ft / 125 sq m) is situated in a smart, red brick converted house that overlooks communal gardens. The flat is set on the first floor (with lift) and features high ceilings with well-proportioned rooms. An off street parking space may be available. Great location close to schools, Hampstead High Street and good transport links. Tube stations nearby include Hampstead (Northern line) 0.4 miles and Finchley Road (Jubilee & Metropolitan lines) 0.5 miles.

- 3 Bedrooms • 2 Bathrooms (1 en suite) • Double Reception Room • Kitchen/Breakfast Room • Lift • Communal Garden • Off Street Parking Available • Camden Council Tax Band G • EPC - C • Unfurnished

EPC Rating: C Council Tax Band: G

£1,250 PER WEEK

UNFURNISHED

TENANTS FEES: As well as paying the rent, tenants may also be required to make the following permitted payments:

Holding Deposit (maximum of 1 week's rent)

Security Deposit equivalent to 5 or 6 weeks' rent (AST tenancies)

Utilities, Communications services charges including TV licence, and Council Tax

Please contact us for information regarding any further Tenants permitted payments under the Tenant Fees Act 2019

Misrepresentation Act 1967. This brochure and the descriptions and measurements herein do not constitute representation and whilst every effort has been made to ensure accuracy, this cannot be guaranteed.

ARLINGTON

RESIDENTIAL

020 7722 3322

arlingtonresidential.com







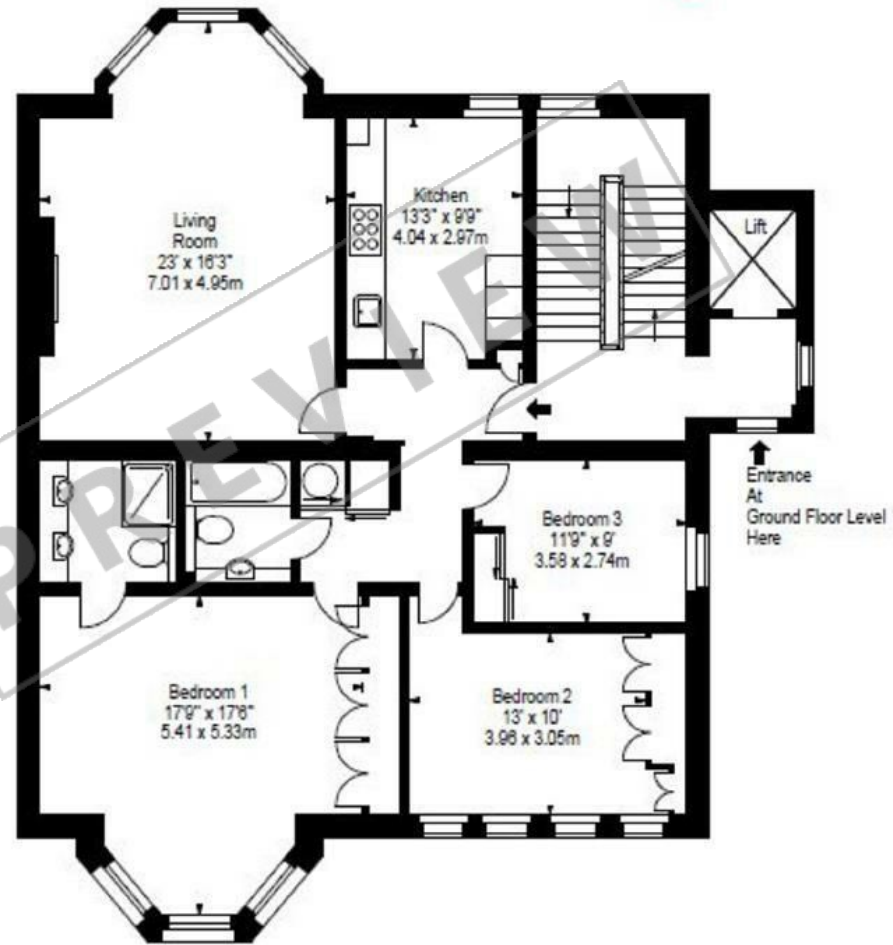




FIRST FLOOR FLAT,
59 FITZJOHNS AVENUE, NW3

APPROX. GROSS FLOOR AREA
1356 Ft² - 125.97 M²

ILLUSTRATION FOR IDENTIFICATION PURPOSES ONLY, NOT TO SCALE
(Measurements Taken From Supplied Plans)



FIRST FLOOR

BKR

www.bkr.com.au
T: 088 217 2022
© BKR 2018