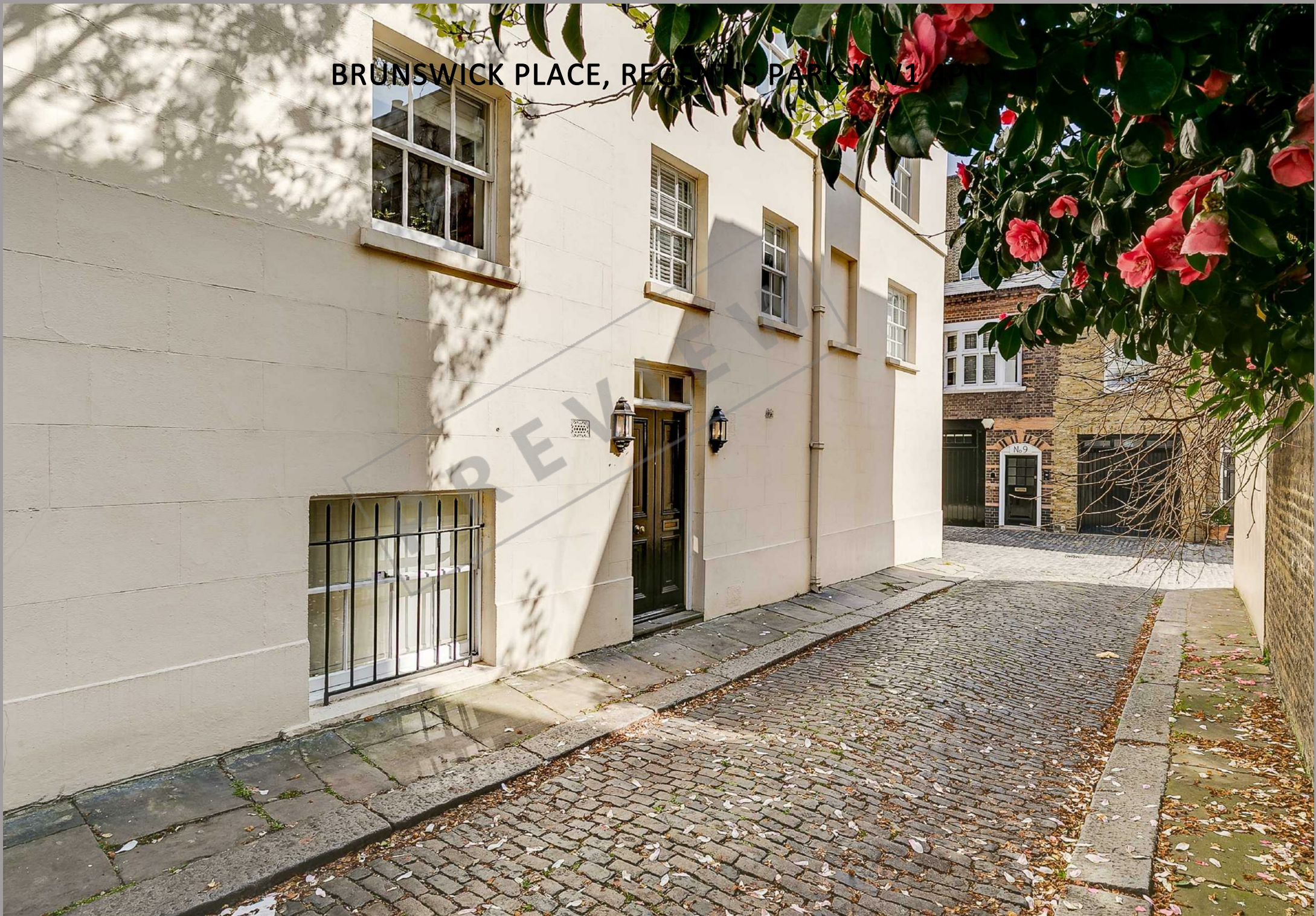


BRUNSWICK PLACE, REGENT PARK, NW1



BRUNSWICK PLACE, REGENT'S PARK NW1 4PN

This beautifully presented four bedroom triplex mews property offers stylish interiors within a Nash period building located just a few metres from Regents Park's open spaces.

Refurbished in recent years, the apartment offers solid wood floors, a fabulous Smallbone kitchen and modern bathrooms, as well as a large lock up garage. The property is entered on the ground floor with the accommodation arranged over the first and second floors.

Marylebone High Street is within 300 metres and Oxford Streets extensive shopping amenities just over half a mile away. The nearest tube stations are Regent Park (200m), Great Portland Street (0.3 miles) and Baker Street (0.4 miles).

- 4 Bedrooms • 2 Bathrooms • Double Reception Room • Kitchen/Diner • Lock Up Garage • Within 50 metres of Regents Park • Westminster Council Tax Band H • EPC - E • Unfurnished

EPC Rating: G Council Tax Band: H

£1,850 PER WEEK

FURNISHED/UNFURNISHED

TENANTS FEES: As well as paying the rent, tenants may also be required to make the following permitted payments:

Holding Deposit (maximum of 1 week's rent)

Security Deposit equivalent to 5 or 6 weeks' rent (AST tenancies)

Utilities, Communications services charges including TV licence, and Council Tax

Please contact us for information regarding any further Tenants permitted payments under the Tenant Fees Act 2019

Misrepresentation Act 1967. This brochure and the descriptions and measurements herein do not constitute representation and whilst every effort has been made to ensure accuracy, this cannot be guaranteed.

ARLINGTON

RESIDENTIAL

020 7722 3322

arlingtonresidential.com





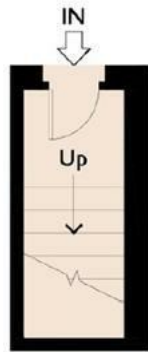




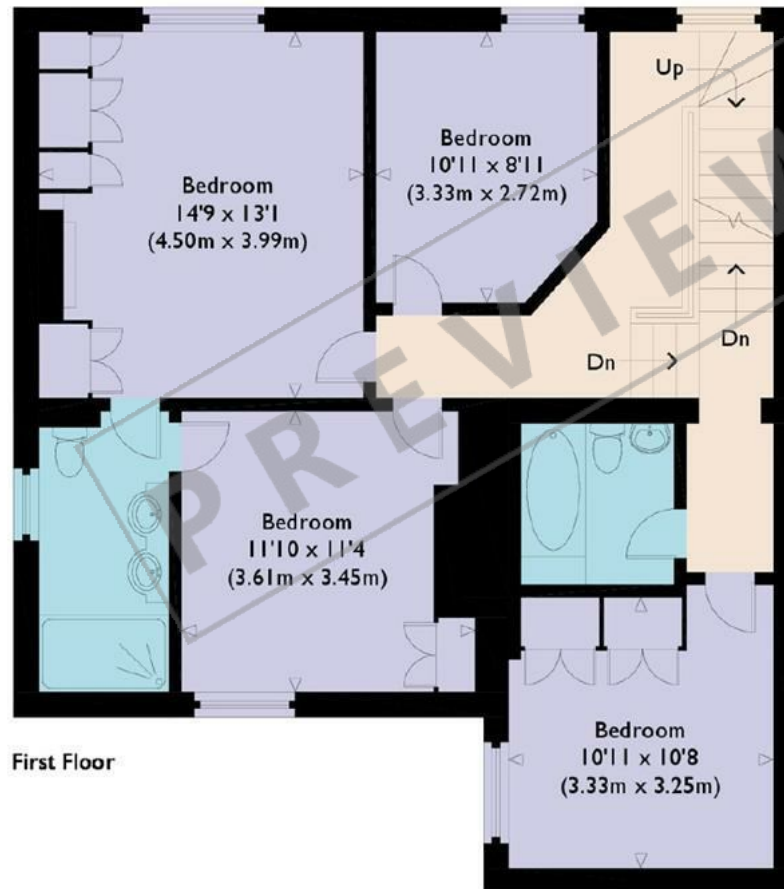


Brunswick Place, NW1

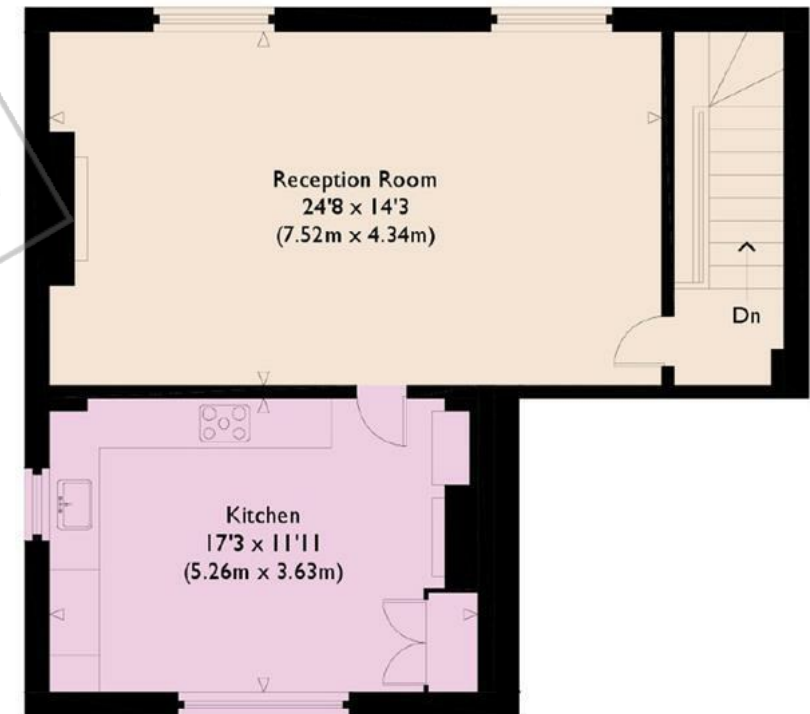
Approximate Gross Internal Floor Area : 1537 sq ft / 142.8 sq m (Excluding External Garage)
Approximate Gross Internal Floor Area : 1649 sq ft / 153.2 sq m (Including External Garage)



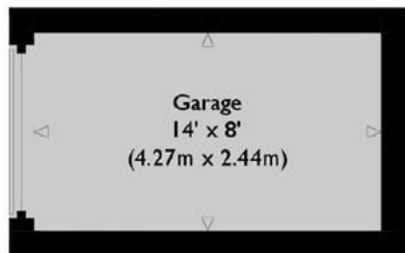
Ground Floor



First Floor



Second Floor



Ground Floor

Illustration for identification purposes only, measurements are approximate, not to scale.