



ABERCORN PLACE, ST JOHN'S WOOD NW8

ABERCORN PLACE, ST JOHN'S WOOD NW8

A beautifully refurbished detached house with elegant and spacious entertaining space, which is believed to be one of the earliest built houses in St John's Wood, in around 1815. This grand house is accessed via a central flight of steps, flanked by railings which leads to an impressive Doric porch with fluted columns. One of the earlier villas in this part of St John's Wood, this house is shown on Crutchley's map of London of 1829. This handsome Neoclassical villa, was the home of Edward John Gregory RA (1850-1909), a noted late Victorian painter who was for sometime President of the Royal Institute of Painters in Water Colours.

ACCOMMODATION AND AMENITIES:

ENTRANCE HALL WITH RESTORED ORIGINAL FEATURES, GRAND DRAWING ROOM WITH HIGH CEILINGS AND FEATURE FIREPLACES, ELEGANT DINING ROOM, STUDY, LIBRARY, KITCHEN/BREAKFAST ROOM, TV/MEDIA ROOM, PRINCIPAL BEDROOM SUITE WITH TWO DRESSING ROOMS AND AN EN SUITE BATHROOM, FOUR FURTHER BEDROOM SUITES, GYM, GARDEN, GATED OFF STREET PARKING FOR 2/3 CARS, EAVES STORAGE.

RENTAL PRICE: £4,500 per week



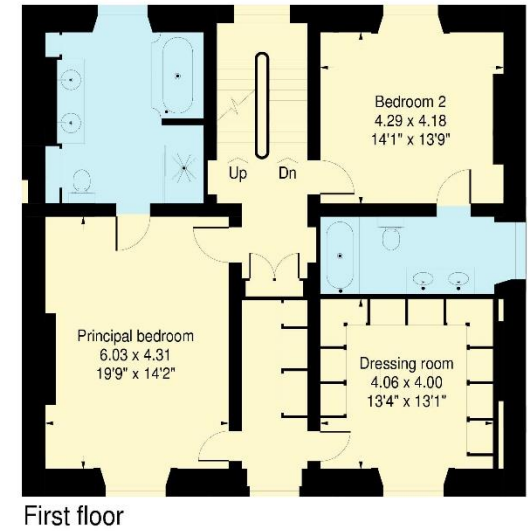
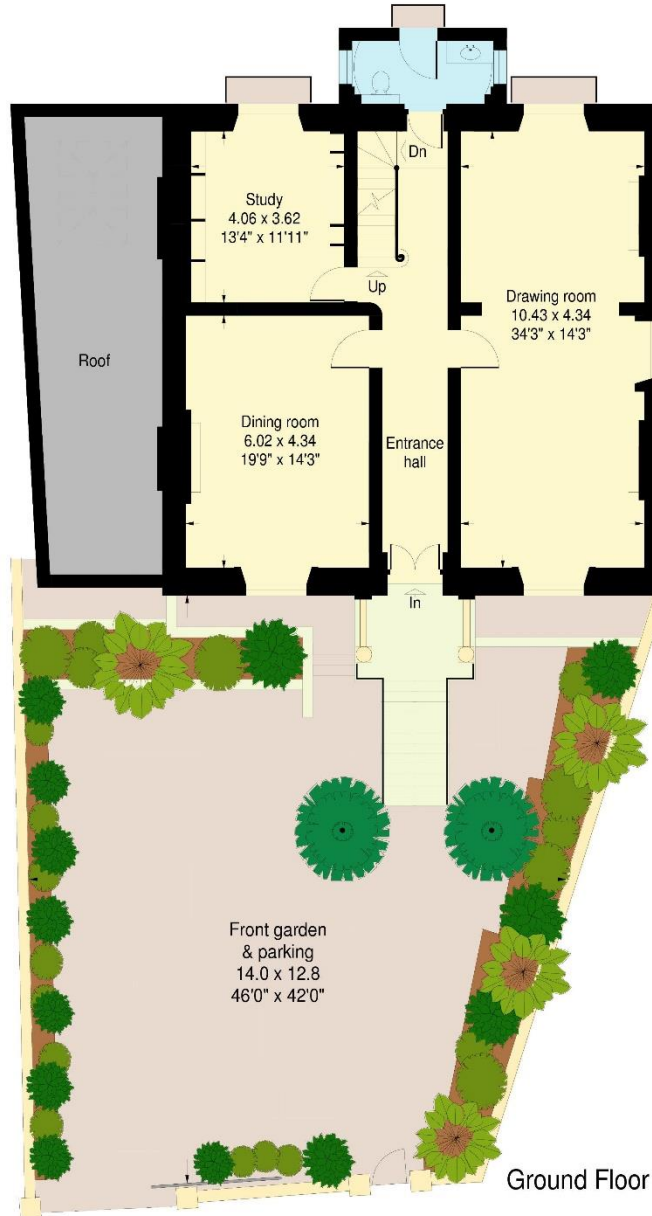
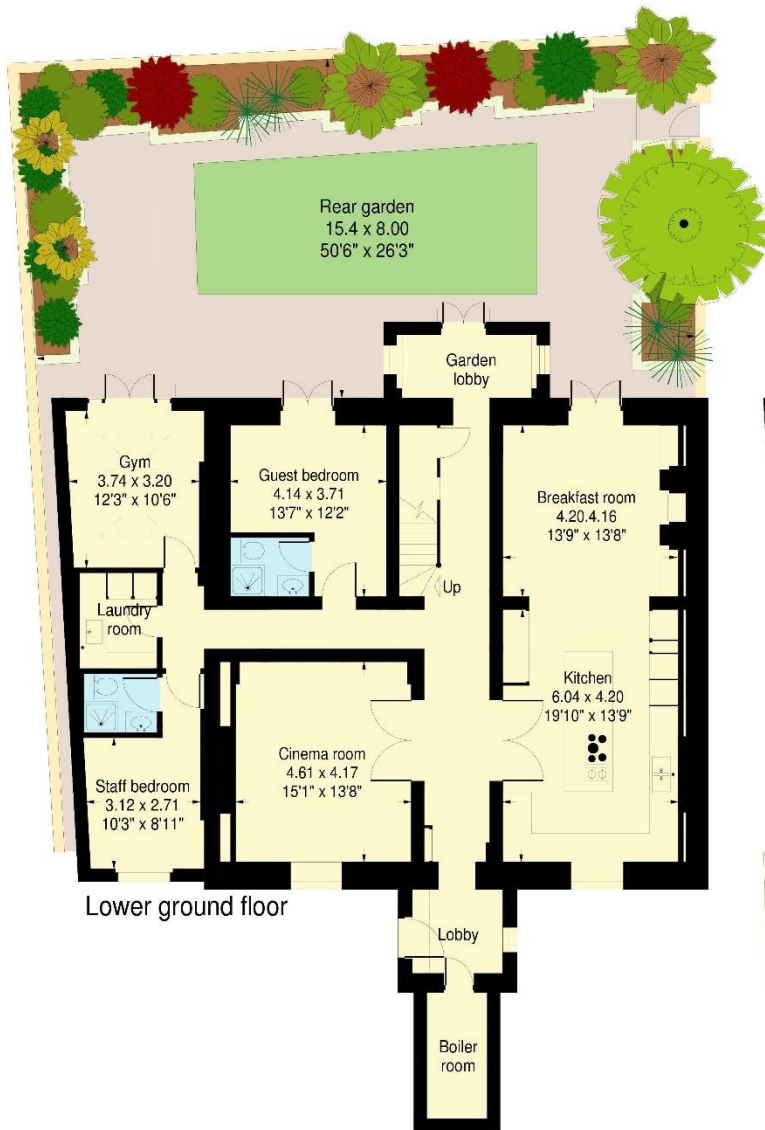






Abercorn Place, St.John's Wood, London NW8

Approximate Gross Internal Area:
 466.5 sq.m. / 5021 sq.ft.
 (including reduced height area,
 below 1.5m - denoted with dashed line)



www.ProplanUK.co.uk

This plan is for guidance only and must not be relied upon as a statement of fact.