

ST JOHN'S WOOD PARK, ST JOHN'S WOOD, LONDON NW8 6NJ



ST JOHN'S WOOD PARK, ST JOHN'S WOOD, LONDON NW8 6NJ

This smart and well ordered 5th floor apartment offers contemporary living accommodation with a double reception room, and 3 bedrooms (1 en suite), with modern kitchen and bathrooms. It offers approximately 1100 sq ft / 103 sq m and benefits from 24 hour concierge, on site property management, communal heating and hot water, communal gardens and off street parking.

Boydell Court is a gated private development located within a short walk of Swiss Cottage (Jubilee Line) tube station - 0.2 miles.

St Johns Wood High Street and the American School are approximately half a mile away.

- 3 Bedrooms • En suite bathroom • Shower room • Reception Room • Dining Room • Separate Kitchen • 24 Hour Concierge • Off Street Parking • Communal Gardens • Inclusive Central Heating & Hot Water

EPC Rating: C Council Tax Band: F

£1,200 PER WEEK

FURNISHED/UNFURNISHED

TENANTS FEES: As well as paying the rent, tenants may also be required to make the following permitted payments:

Holding Deposit (maximum of 1 week's rent)

Security Deposit equivalent to 5 or 6 weeks' rent (AST tenancies)

Utilities, Communications services charges including TV licence, and Council Tax

Please contact us for information regarding any further Tenants permitted payments under the Tenant Fees Act 2019

Misrepresentation Act 1967. This brochure and the descriptions and measurements herein do not constitute representation and whilst every effort has been made to ensure accuracy, this cannot be guaranteed.

ARLINGTON

RESIDENTIAL

020 7722 3322

arlingtonresidential.com

















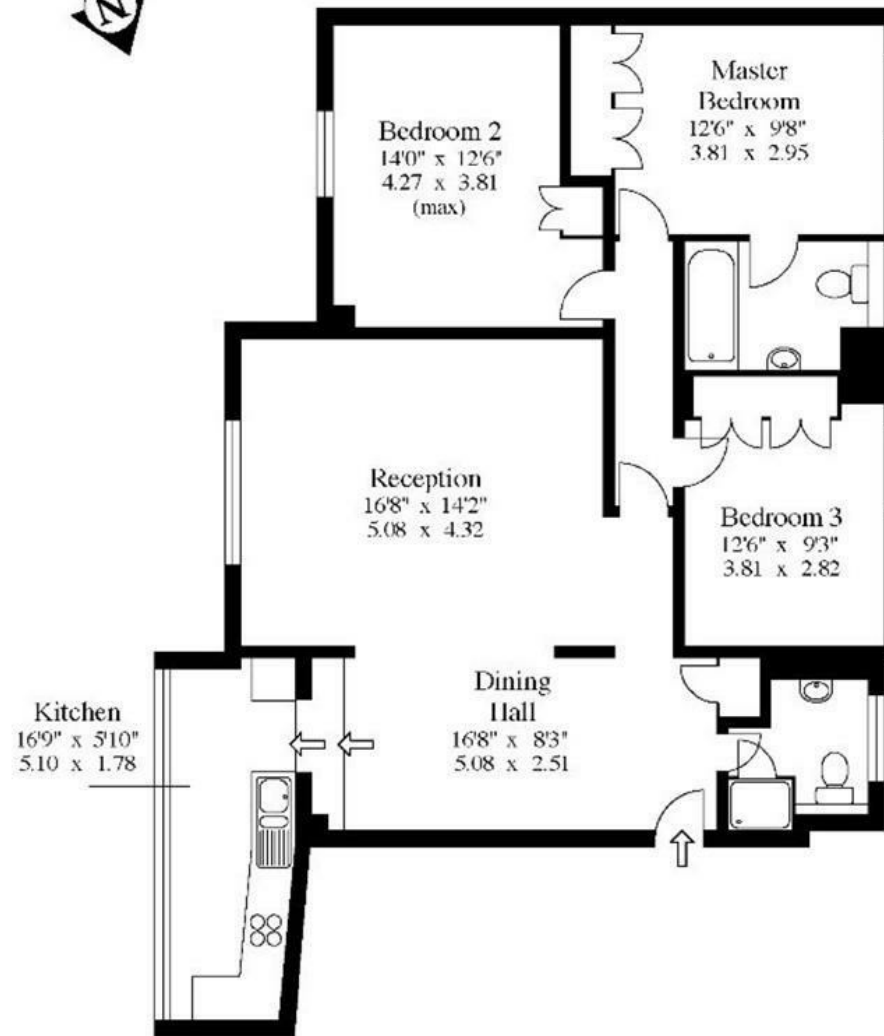






18 Boydell Court,
St Johns Wood Park,
NW8.

Approx Gross Floor Area = 1110 Sq. Feet
= 103.1 Sq. Metres



Fifth Floor

For illustrative purposes only. Not to scale.
Prepared by Making Plans Ltd. Tel: 0113 258 7607