

83, GREAT TITCHFIELD STREET, FITZROVIA W1W 6RH



# 83, GREAT TITCHFIELD STREET, FITZROVIA W1W 6RH

A luxury, architect-designed two bedroom apartment in this stylishly converted former printworks in the heart of Fitzrovia. This first floor property (700 sq ft / 65 sq m) features striking interiors including Crittal windows, exposed brickwork and luxury fixtures and furnishings, and also comes with designer kitchen and bathroom, Great Titchfield Street is just short walk from Regent's Park and London's vibrant West End.

The nearest tube station is Goodge Street, Northern Line (0.3 miles) with Oxford Circus Station also within walking distance (0.4 miles).

- 2 BEDROOMS • RECEPTION ROOM • OPEN PLAN KITCHEN • BATHROOM • GUEST CLOAKROOM • STORAGE • VIDEO ENTRY SYSTEM • WESTMINSTER COUNCIL TAX

EPC Rating: C Council Tax Band: F

**£1,615 PER WEEK**  
**FURNISHED**

**TENANTS FEES:** As well as paying the rent, tenants may also be required to make the following permitted payments:

Holding Deposit (maximum of 1 week's rent)

Security Deposit equivalent to 5 or 6 weeks' rent (AST tenancies)

Utilities, Communications services charges including TV licence, and Council Tax

Misrepresentation Act 1967. This brochure and the descriptions and measurements herein do not constitute representation and whilst every effort has been made to ensure accuracy, this cannot be guaranteed.

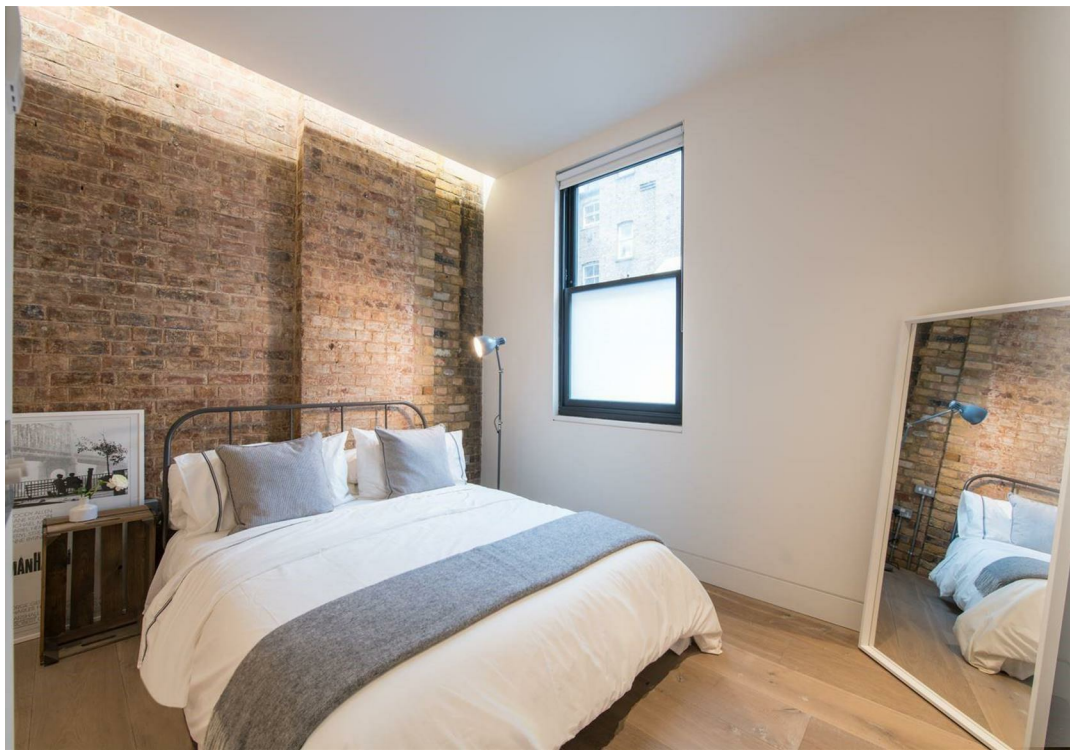
**ARLINGTON**

RESIDENTIAL

**020 7722 3322**

[arlingtonresidential.com](http://arlingtonresidential.com)







THE  
KING'S CANARY

81

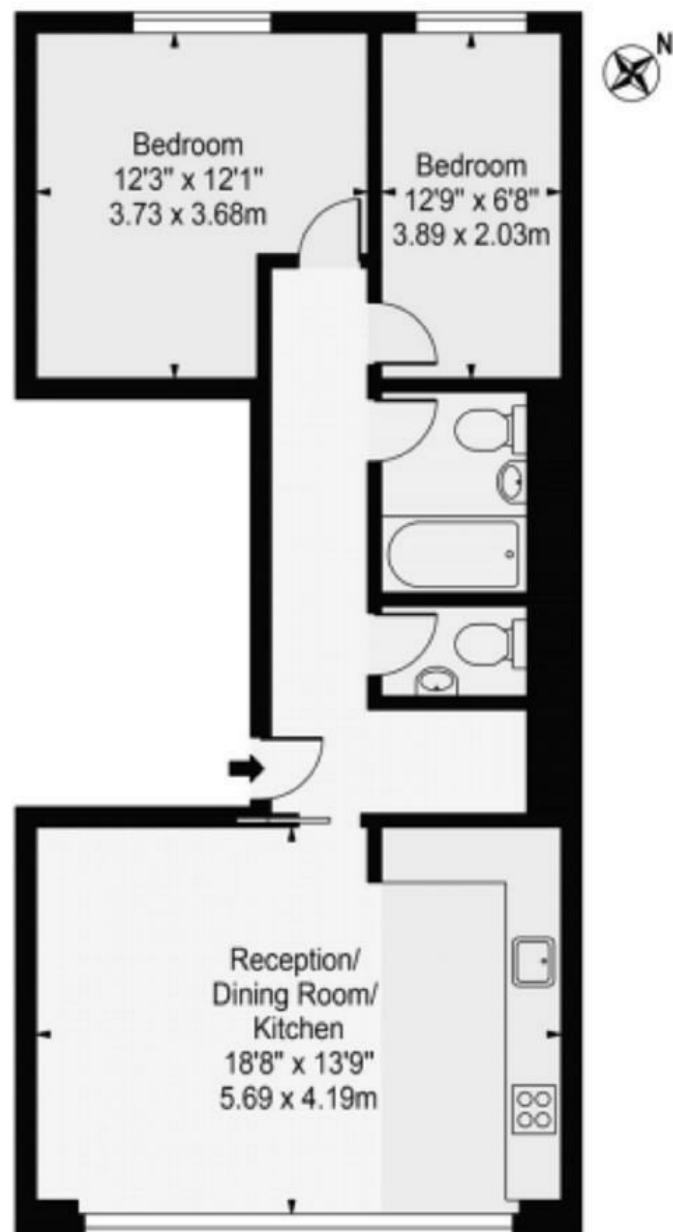
PRINT WORKS HOUSE

83

YOGA PILATES  
TRAINING

# The Print Works House

Approx. Gross Internal Area 700 Sq Ft - 65.03 Sq M



## First Floor

For Illustration Purposes Only - Not To Scale

This floor plan should be used as a general outline for guidance only and does not constitute in whole or in part an offer or contract.  
Any intending purchaser or lessee should satisfy themselves by inspection, searches, enquiries and full survey as to the correctness of each statement.  
Any areas, measurements or distances quoted are approximate and should not be used to value a property or be the basis of any sale or let.