

1010, BOYDELL COURT, ST JOHNS WOOD NW8 6NH



# 1010, BOYDELL COURT, ST JOHNS WOOD NW8 6NH

A smart penthouse with a large private roof terrace giving breathtaking views across the London skyline situated on the 10th floor of this sought after gated residential complex set in communal gardens, with 24 hour concierge/security. Swiss Cottage (Jubilee Line) underground station is the nearest tube station and the American School is within half a mile.

- 3 Bedrooms • 2 Bathrooms (1 en suite) • Double Reception Room • Kitchen • Private Roof Terrace • Lift • 24 Hour Porter • EPC - C

EPC Rating: C Council Tax Band:

**£1,950 PER WEEK**

**FURNISHED/UNFURNISHED**

**TENANTS FEES:** As well as paying the rent, tenants may also be required to make the following permitted payments:

Holding Deposit (maximum of 1 week's rent)

Security Deposit equivalent to 5 or 6 weeks' rent (AST tenancies)

Utilities, Communications services charges including TV licence, and Council Tax

Please contact us for information regarding any further Tenants permitted payments under the Tenant Fees Act 2019

Misrepresentation Act 1967. This brochure and the descriptions and measurements herein do not constitute representation and whilst every effort has been made to ensure accuracy, this cannot be guaranteed.

**ARLINGTON**

RESIDENTIAL

**020 7722 3322**

[arlingtonresidential.com](http://arlingtonresidential.com)





















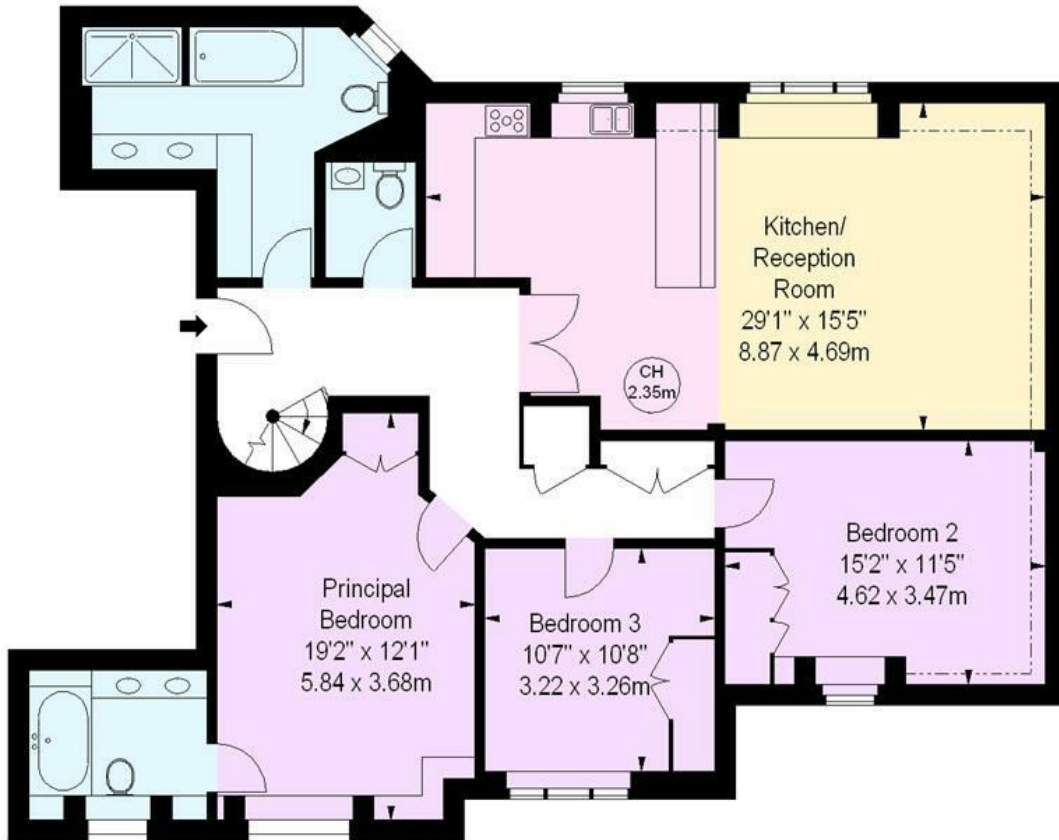




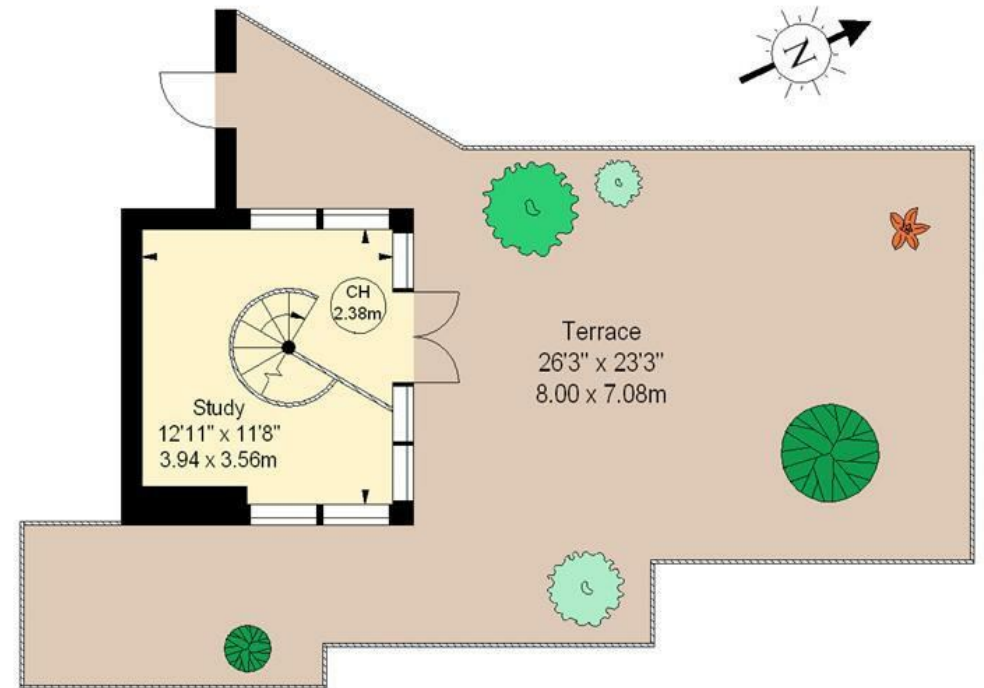
# Boydell Court, NW8

Approximate gross internal area  
1471 sq ft / 136.66 sq m

Key :  
CH - Ceiling Height



Tenth Floor



Eleventh Floor

The floor plan is not to scale and measurements and areas shown are approximate and therefore should be used for illustrative purposes only. The plan has been prepared in accordance with the RICS code of Measuring Practice and whilst we have confidence in the information produced, it must not be relied on. If there is any aspect of particular importance, you should carry out or commission your own inspection of the property.  
Copyright of FeaturePRO.