

NORTHWICK TERRACE, ST JOHN'S WOOD NW8 8JJ



NORTHWICK TERRACE, ST JOHN'S WOOD NW8 8JJ

A freshly modern town house with a garage, located close to the amenities and transport links of both Little Venice and St John's Wood.

The accommodation is arranged over three floors and includes two reception rooms, a modern kitchen/breakfast room and four double sized bedrooms with three bathrooms (two en suite) and a guest cloakroom. There is a small private patio to the rear as well as a lock up garage.

The nearest tube station is Warwick Avenue (Bakerloo Line) - 0.4 miles.

- 4 Bedrooms • 3 Bathrooms (2 en Suite) • Guest Cloakroom • 2 Reception Rooms • Kitchen/Breakfast Room • Decked Patio Garden • Lock Up Garage • EPC Rating D • Westminster Council Tax Band H • Unfurnished

EPC Rating: D Council Tax Band: H

£1,550 PER WEEK

UNFURNISHED

TENANTS FEES: As well as paying the rent, tenants may also be required to make the following permitted payments:

Holding Deposit (maximum of 1 week's rent)

Security Deposit equivalent to 5 or 6 weeks' rent (AST tenancies)

Utilities, Communications services charges including TV licence, and Council Tax

Please contact us for information regarding any further Tenants permitted payments under the Tenant Fees Act 2019

Misrepresentation Act 1967. This brochure and the descriptions and measurements herein do not constitute representation and whilst every effort has been made to ensure accuracy, this cannot be guaranteed.

ARLINGTON

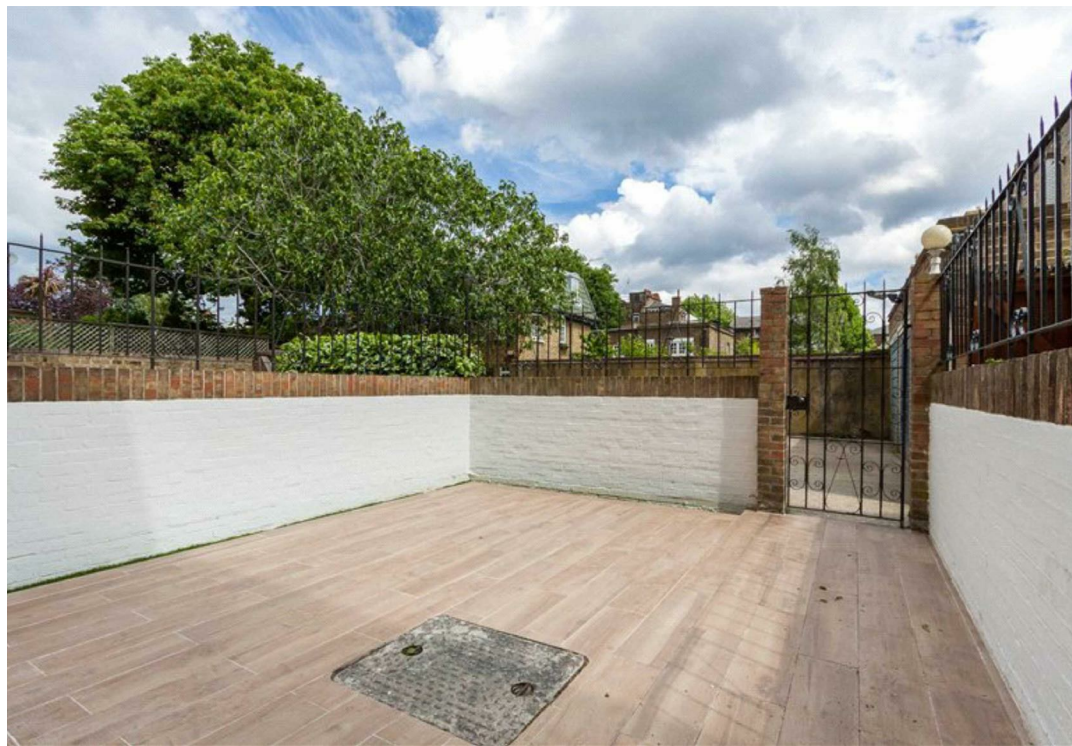
RESIDENTIAL

020 7722 3322

arlingtonresidential.com

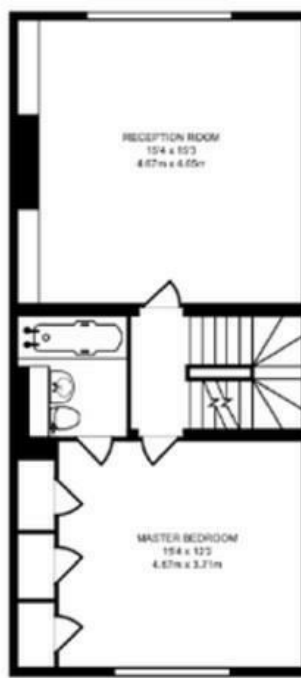


Pay by
phone
0207 005 0055
or text
07950 080201
quoting location
6687
4 hour
No return
within 1 hour



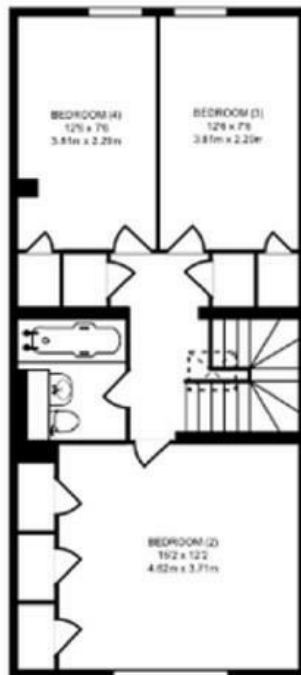






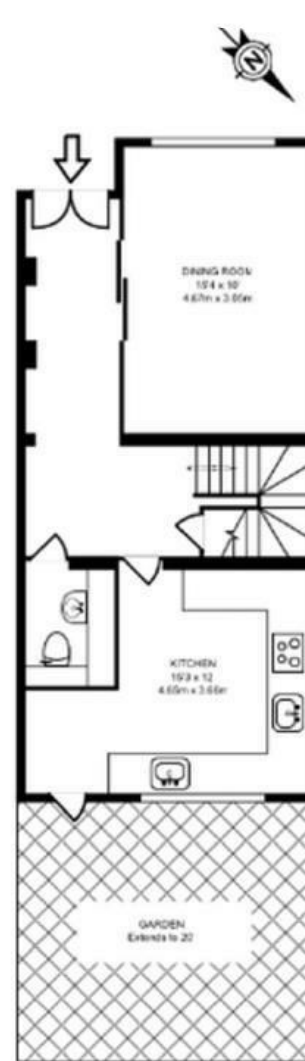
FIRST FLOOR

553 SQ FT/51.40 SQ M



SECOND FLOOR

553 SQ FT/51.40 SQ M



GROUND FLOOR

542 SQ FT/50.38 SQ M