



49 Meadowbank, Primrose Hill, NW3

ARLINGTON
RESIDENTIAL





A three-floor town house providing 1,632 sq ft/ 152 sq m of accommodation that can be 3 or 4 bedrooms with the benefit of off-street parking for 2 cars and a private patio leading directly onto communal gardens.

The house is located in a quiet cul-de-sac within this sought after development and superbly positioned within a few hundred yards of Primrose Hill Park and a few moments from the shops, cafes and restaurants of Belsize Park and Primrose Hill Village.

Planning consent had previously been granted (now lapsed) for a roof extension, similar to the neighbour's on either side.

EPC Rating: D

Council Tax Band: G

GUIDE PRICE £2,095,000

Freehold

ARLINGTON

RESIDENTIAL

8 Wellington Road, St. John's Wood, London NW8 9SP

info@arlingtonresidential.com

+44 (0)20 7722 3322

arlingtonresidential.com

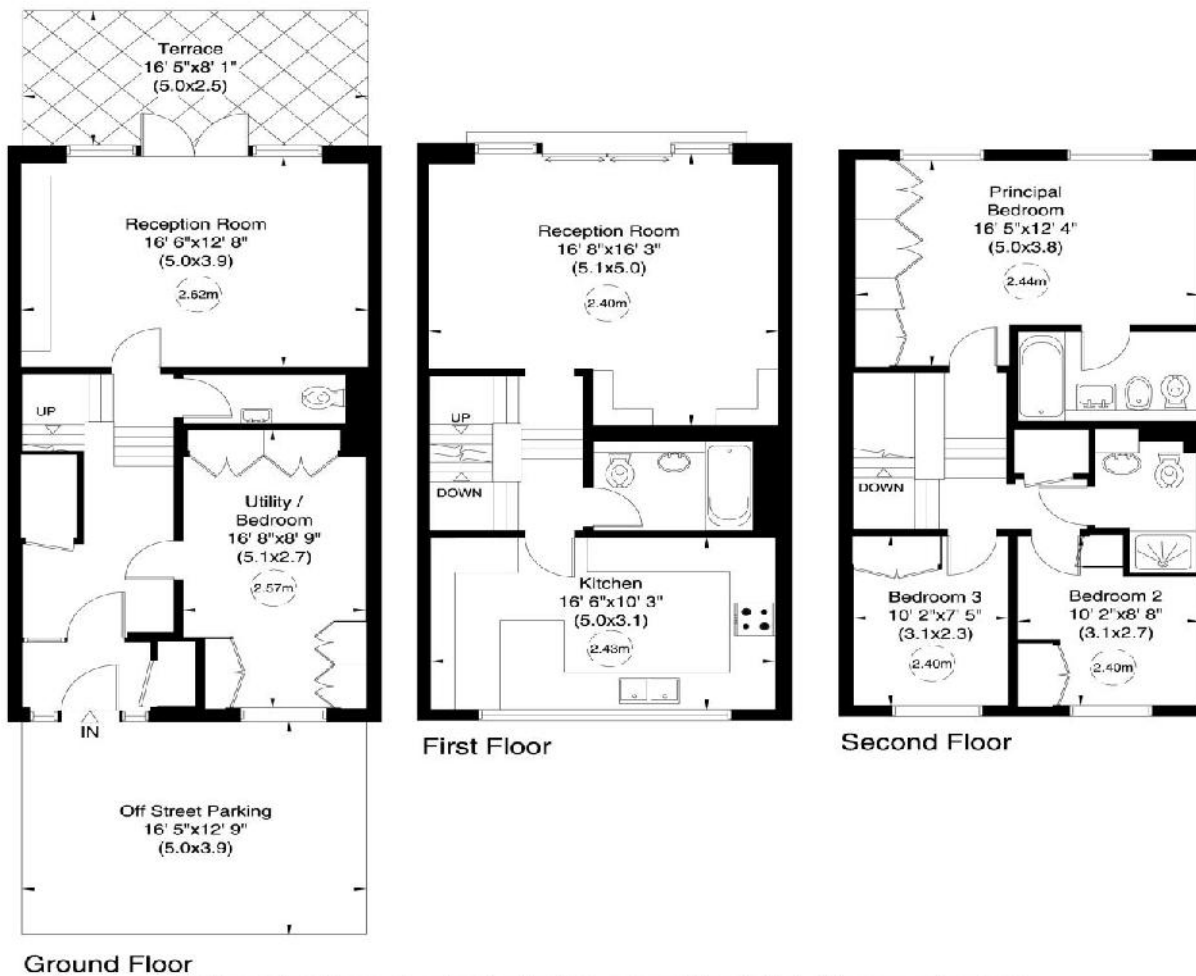


Meadowbank, NW3

Gross internal area (approx.)

152 Sq m (1632 Sq ft)

For identification only, Not to Scale



Not to scale, for guidance only and must not be relied upon as a statement of fact. All measurements and areas are approximate only (and have been prepared in accordance with the current edition of the RICS Code of Measuring Practice).