



FAIRFAX ROAD, LONDON, NW6

ARLINGTON
RESIDENTIAL

A three floor town house set back from the road and providing 1,972 sq ft / 83 sq m of accommodation.

The house features a 62 ft / 17 m south east facing rear garden and benefits from off street parking for 1 car.

Fairfax Road is located within a few hundred yards of the multiple shopping and transport facilities of both Finchley Road and Swiss Cottage. EPC Rating – D.

ACCOMMODATION AND AMENITIES

- Double Reception Room • Kitchen/Conservatory
- Study
- Principal Bedroom Suite • 2-3 further Bedrooms
- Bedroom 4/Reception Room
- Family Bathroom • Guest Cloakroom
- Garden
- Off street parking

FREEHOLD

GUIDE PRICE: £1,975,000

SOLE SELLING AGENTS





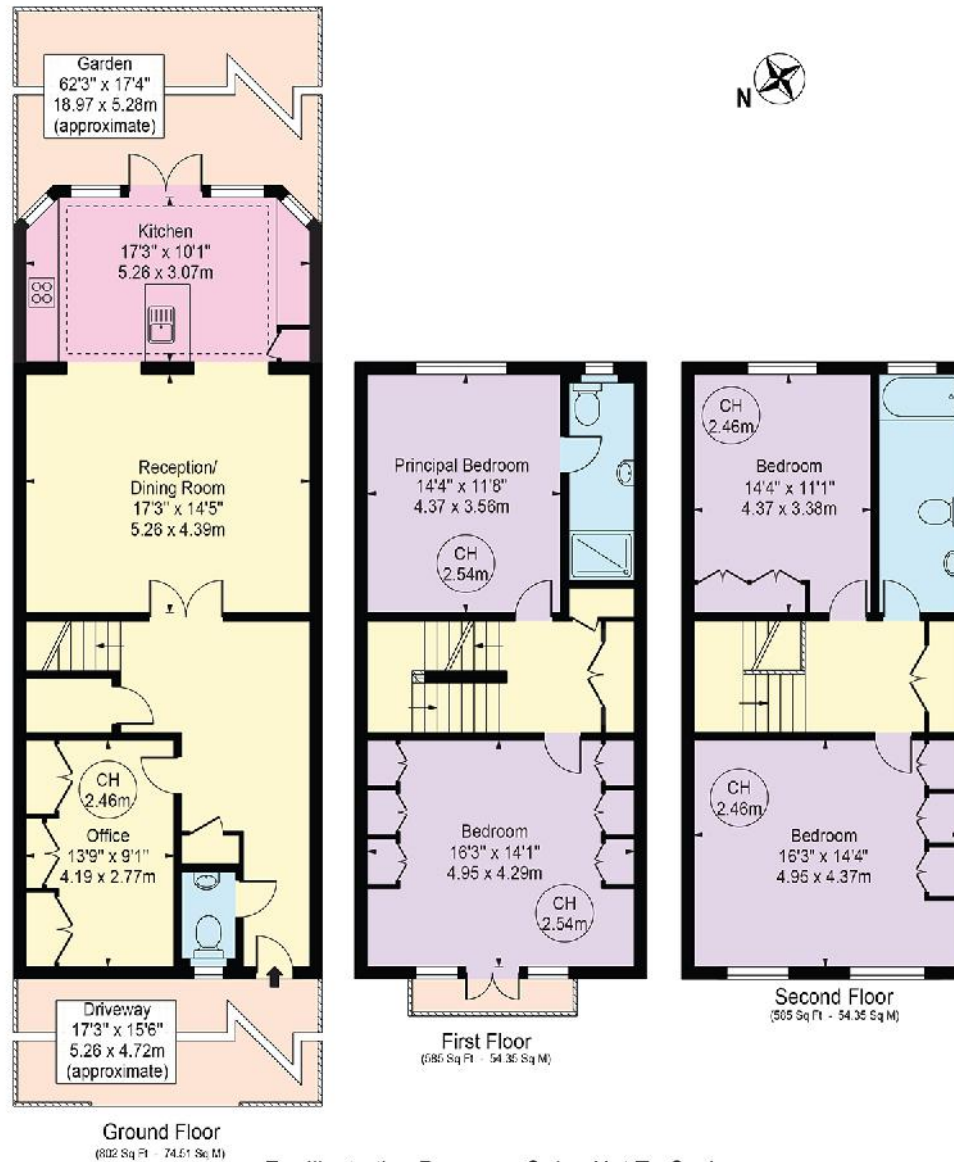






Fairfax Road

Approx. Gross Internal Area 1972 Sq Ft - 183.20 Sq M



For Illustration Purposes Only - Not To Scale

This floor plan should be used as a general outline for guidance only and does not constitute in whole or in part an offer or contract. Any intending purchaser or lessee should satisfy themselves by inspection, searches, enquiries and full survey as to the correctness of each statement. Any areas, measurements or distances quoted are approximate and should not be used to value a property or be the basis of any sale or let.

Copyright Morriart Photography & Design LTD