

ST JOHN'S WOOD PARK, ST JOHN'S WOOD, LONDON NW8 6NJ



# ST JOHN'S WOOD PARK, ST JOHN'S WOOD, LONDON NW8 6NJ

Set on the first floor of ever popular Boydell Court is this purpose-built development apartment which has been interior designed and finished to a high standard. The accommodation comprises open plan reception room and dining area with separate kitchen as well as three bedrooms and two bathrooms.

Swiss Cottage tube (Jubilee Line) is approx. 0.2 miles away whilst the the American School and St John's Wood High Street are about half a mile away.

- 3 Bedrooms • 3 En-suite Bathrooms • Double Reception Room/Dining Room • Kitchen • Lift • 24 Hour Concierge • Communal Gardens • Unreserved Off Street Parking • Communal Central Heating & Hot Water • Camden Council Tax - F

EPC Rating: E Council Tax Band: F

**£1,300 PER WEEK**

**FURNISHED/UNFURNISHED**

**TENANTS FEES:** As well as paying the rent, tenants may also be required to make the following permitted payments:

Holding Deposit (maximum of 1 week's rent)

Security Deposit equivalent to 5 or 6 weeks' rent (AST tenancies)

Utilities, Communications services charges including TV licence, and Council Tax

Please contact us for information regarding any further Tenants permitted payments under the Tenant Fees Act 2019

Misrepresentation Act 1967. This brochure and the descriptions and measurements herein do not constitute representation and whilst every effort has been made to ensure accuracy, this cannot be guaranteed.

**ARLINGTON**

RESIDENTIAL

**020 7722 3322**

[arlingtonresidential.com](http://arlingtonresidential.com)





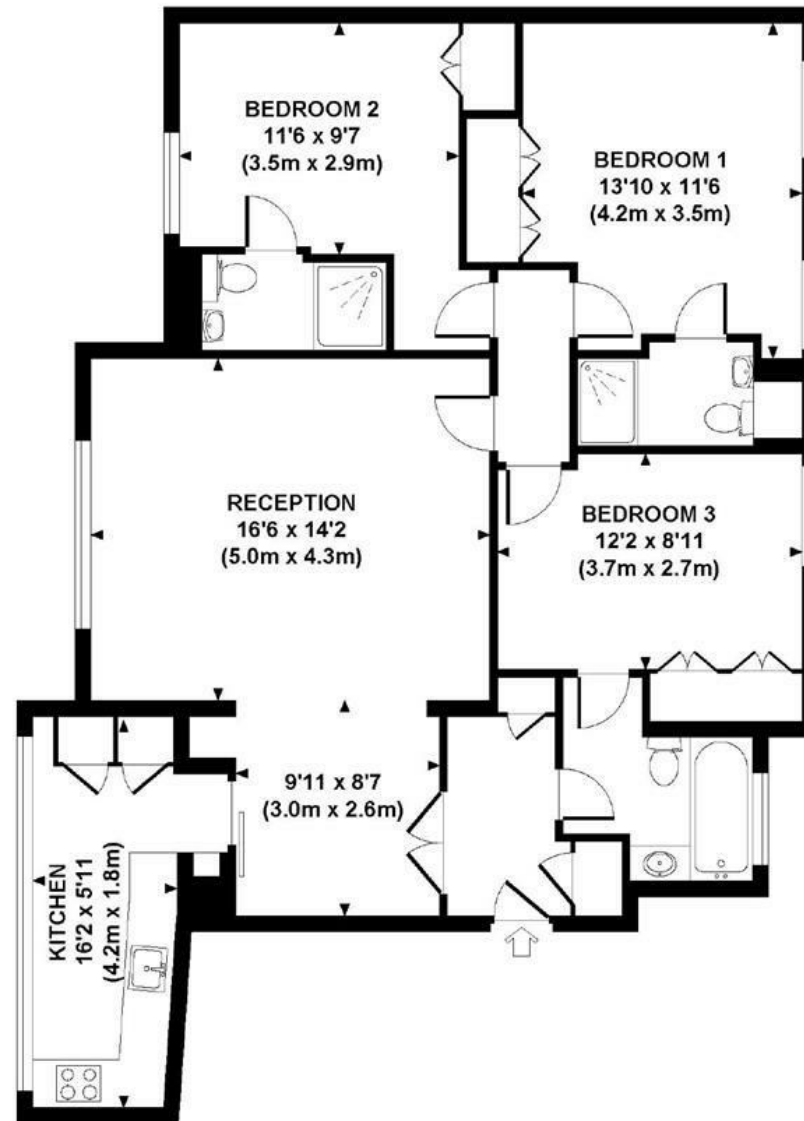






**FLAT 6 BOYDELL COURT  
FIRST FLOOR**

Approx Gross Floor Area 1,065 sq. ft.



**FIRST FLOOR**