



Loudoun Road, St John's Wood NW8

**ARLINGTON**  
RESIDENTIAL

A well presented modern five-bedroom town house providing an excellent family home close to the American School and St John's Wood's High Street. This 1,892 sq ft/ 175 sq m house is arranged over three floors and offers well planned accommodation featuring a large kitchen/ breakfast room, leading onto a 40 ft private rear garden. The house also benefits from a lock up garage adjacent to the house and set behind an electronically operated vehicle barrier.  
St John's Wood Jubilee line tube is approximately 0.4 miles.

**EPC Rating: D**

**Council Tax Band: H**

**GUIDE PRICE £2,850,000**

**Freehold**

**Sole Agent**

# ARLINGTON

RESIDENTIAL

8 Wellington Road, St. John's Wood, London NW8 9SP  
info@arlingtonresidential.com

+44 (0)20 7722 3322  
arlingtonresidential.com









74 LOUDOUN ROAD, NW8  
APPROX. GROSS INTERNAL AREA\*  
1892 FT<sup>2</sup> - 175.76 M<sup>2</sup>

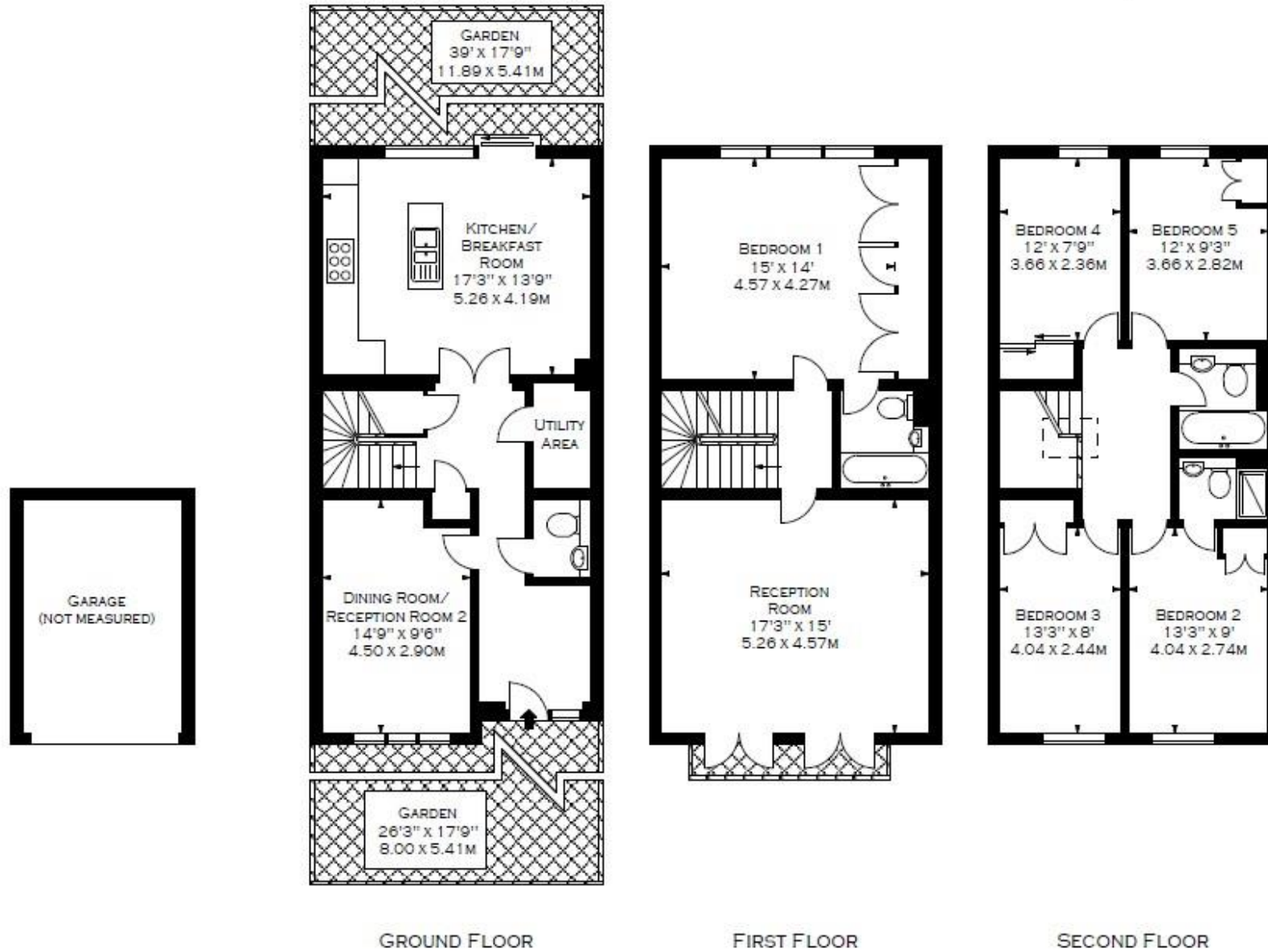
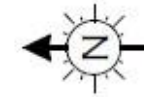


ILLUSTRATION FOR IDENTIFICATION PURPOSES ONLY. NOT TO SCALE

\* AS DEFINED BY RICS - CODE OF MEASURING PRACTICE

© BERRIDGEKIRCHNER FLOORPLANS.

TEL 020 7787 5544