

BOYDELL COURT, ST JOHN'S WOOD PARK, LONDON NW8 6NG



BOYDELL COURT, ST JOHN'S WOOD PARK, LONDON NW8 6NG

An attractive, bright modern apartment on the third floor of a sought after gated apartment complex with 24 hour concierge and off street parking. The flat offers three double bedrooms and is presented in a fresh contemporary style. Boydell Court is set in landscaped gardens and the flat benefits from on-site property management plus communal heating and hot water. Swiss Cottage (Jubilee line) tube) is approximately 0.2 miles away, whilst St John's Wood High Street's boutiques and cafés and the American School are just over half a mile away.

- 3 BEDROOMS • 2 SHOWER ROOMS • BATHROOM • DOUBLE RECEPTION ROOM • KITCHEN • LIFT • 24 HOUR CONCIERGE / PORTER • OFF STREET PARKING SPACE • GATED COMPLEX • RENT INCLUDES HEATING & HOT WATER

EPC Rating: C Council Tax Band: F

£1,300 PER WEEK
FURNISHED/UNFURNISHED

TENANTS FEES: As well as paying the rent, tenants may also be required to make the following permitted payments:

Holding Deposit (maximum of 1 week's rent)

Security Deposit equivalent to 5 or 6 weeks' rent (AST tenancies)

Utilities, Communications services charges including TV licence, and Council Tax

Misrepresentation Act 1967. This brochure and the descriptions and measurements herein do not constitute representation and whilst every effort has been made to ensure accuracy, this cannot be guaranteed.

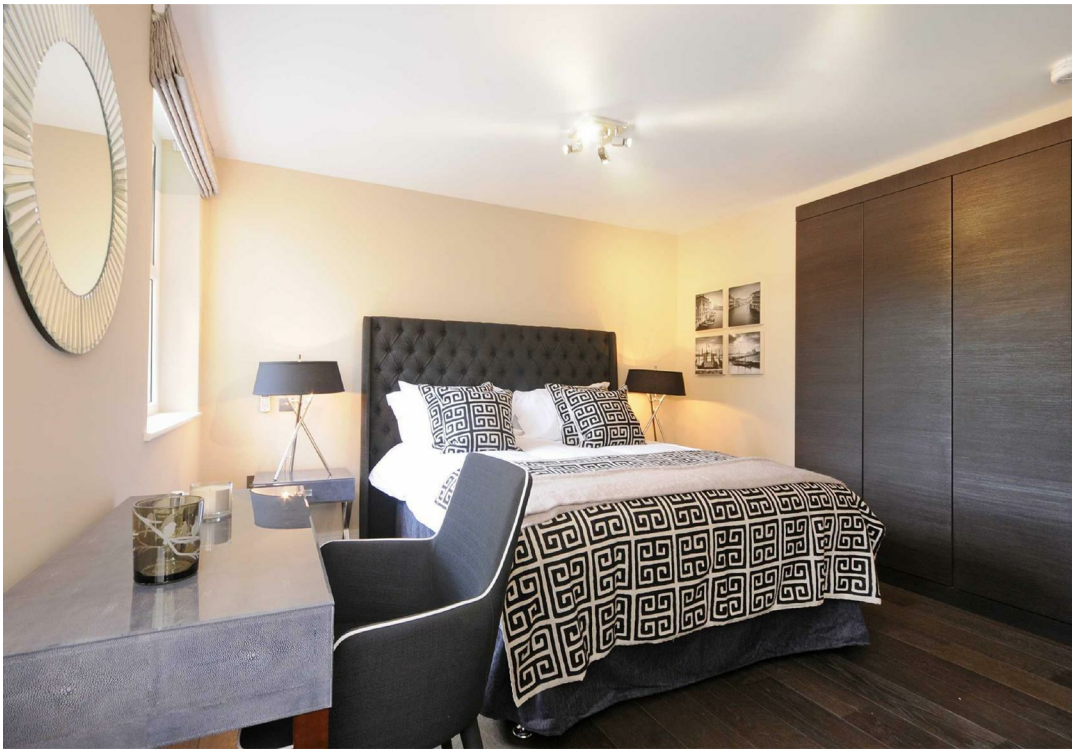
ARLINGTON

RESIDENTIAL

020 7722 3322

arlingtonresidential.com

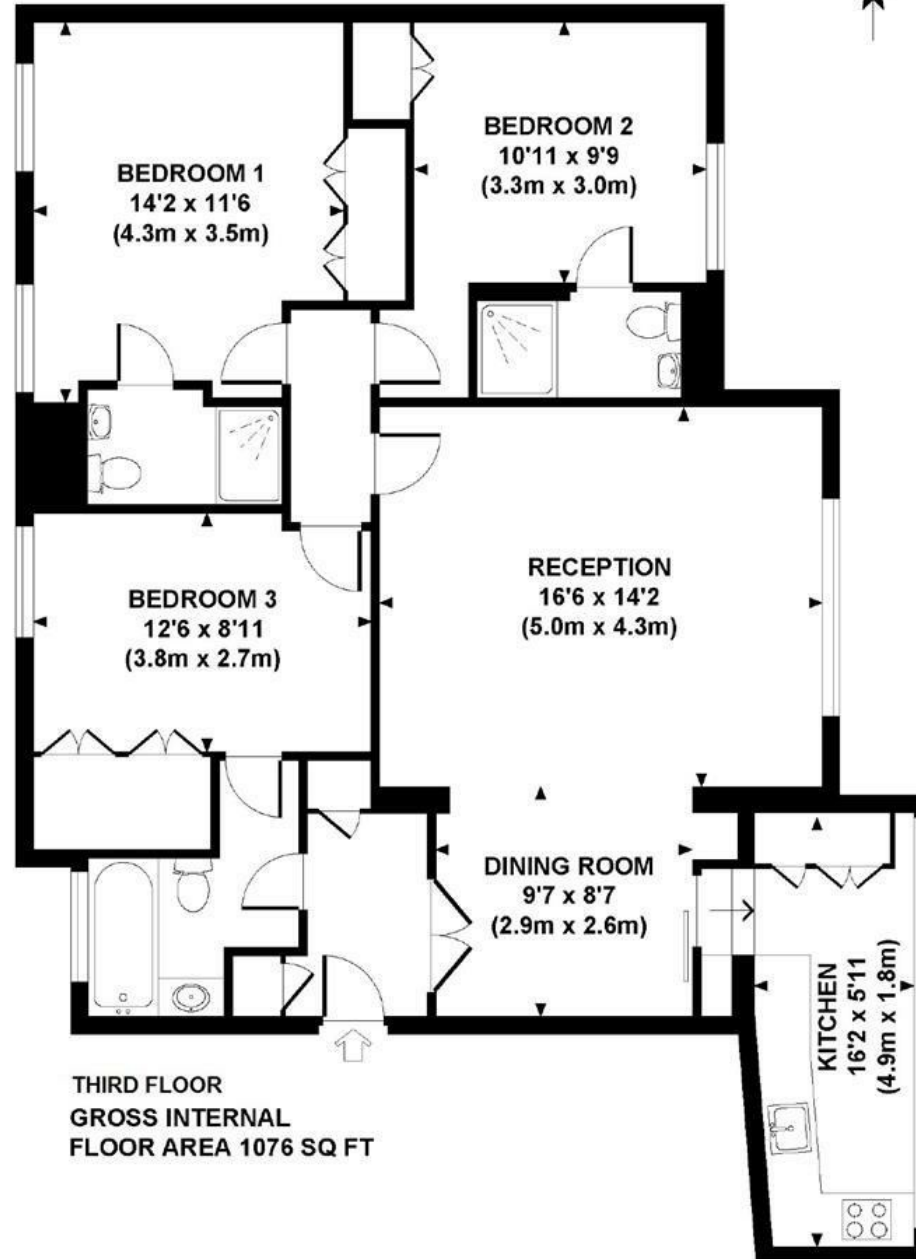






67 BOYDELL COURT

Approximate Gross Internal Area 1076 sq ft / 100 sq m



Although every attempt has been made to ensure accuracy, all measurements are approximate.
The floor plan's for illustrative purposes only and not to scale. Measured in accordance to RICS standards.
DE-PHOTOGRAPHY.NET