

ABERCORN PLACE, ST JOHN'S WOOD, LONDON NW8



ABERCORN PLACE, ST JOHN'S WOOD, LONDON NW8

A wonderful family home providing 3,120 sq ft / 289.9 sq m of accommodation arranged over three floors and set behind a gated driveway with parking for 2-3 cars. The house offers generous contemporary style open plan reception areas on the ground floor that lead onto a south east facing garden. Five bedrooms, 2 bathrooms and 2 shower rooms are arranged on the upper two floors with a large terrace off the principal bedroom. Abercorn Place is ideally located within walking distance of the American School (0.2 miles) St John's Wood High Street and underground tube station. Photographs taken in 2017.

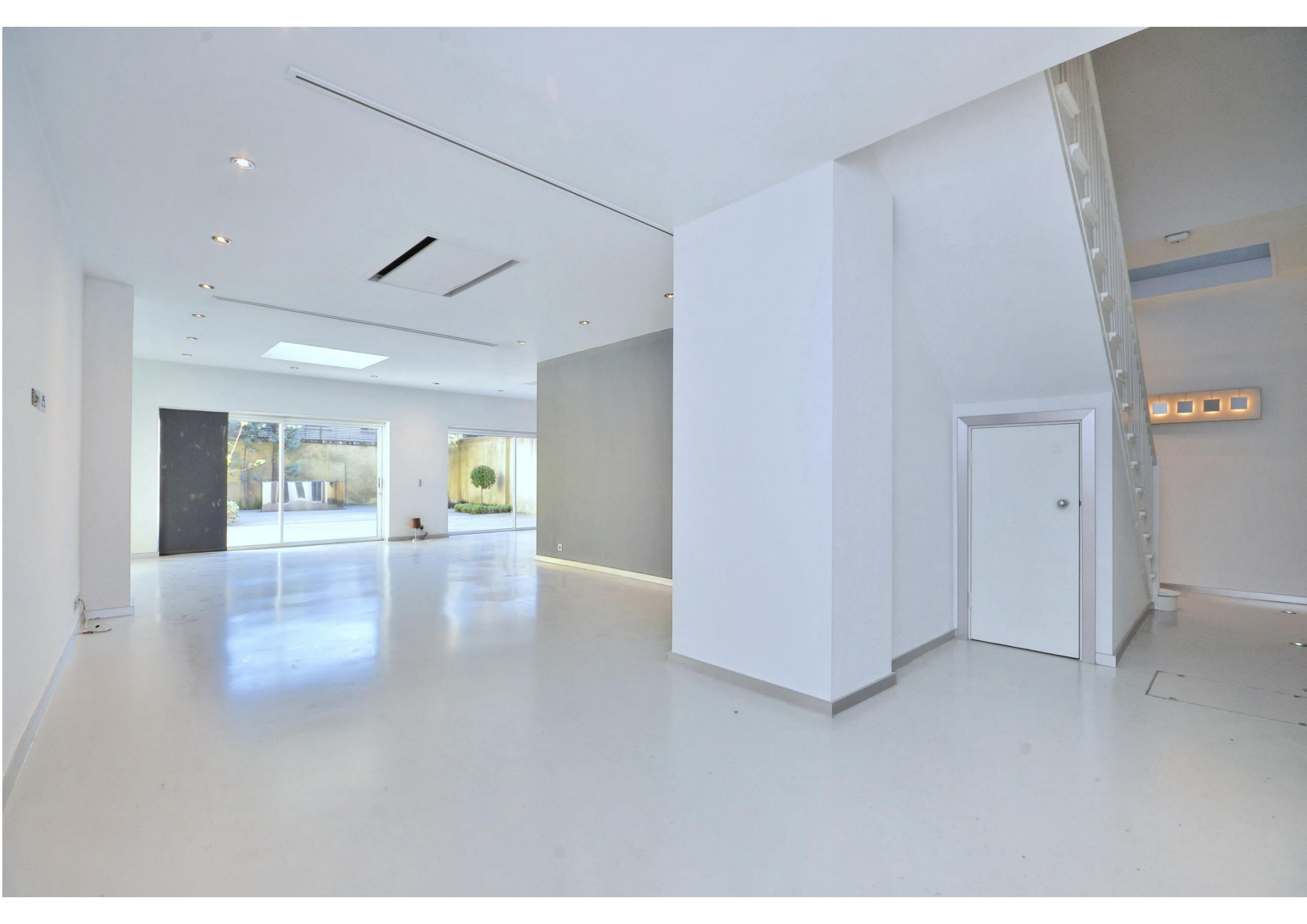
ACCOMMODATION AND AMENITIES:

5 Bedrooms • 2 Ensuite Bathrooms • 2 Shower Rooms (1 Ensuite) • Double Reception Room • Open Plan Kitchen/Family Room • Sitting Room • Guest Cloakroom • Utility Room • Private Walled Garden • Off Street Parking for 2-3 cars

GUIDE PRICE: £4,850,000 FREEHOLD

SOLE AGENTS







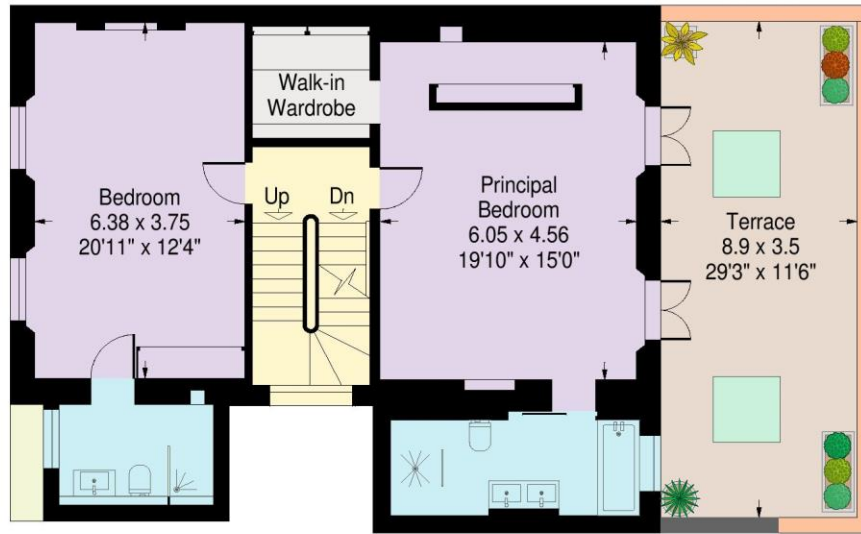




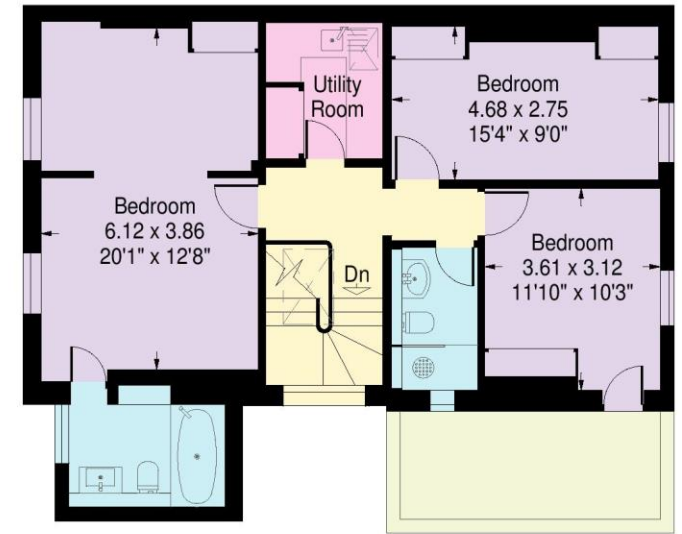


Abercorn Place, London NW8

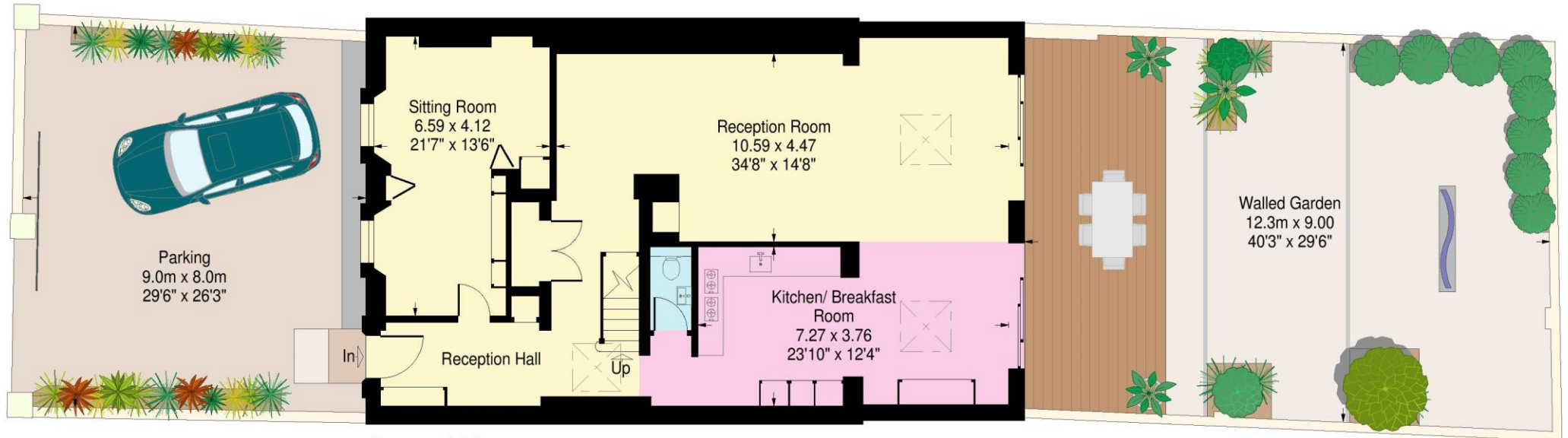
Approximate Gross Internal Area:
289.9 sq.m. / 3120 sq.ft.



First Floor



Second Floor



Ground Floor

Floor Plans produced by

Proplan

01491 842925

All measurements and figures are taken in accordance with RICS guidelines. This plan is for guidance only and must not be relied upon as a statement of fact.

APPROX. SCALE

