



Top Floor Flat, Fitzjohns Avenue NW3

ARLINGTON
RESIDENTIAL

Set within a double fronted Victorian house, a well-presented top floor flat benefiting from a terrace with far reaching views and a designated off street parking space.

The flat provides 1,295 sq ft/120 sq m of accommodation with a large principal bedroom and reception room with vaulted ceiling.

The building has a passenger lift to the second floor as well as communal gardens to the rear and is located at the northern end of Fitzjohn's Avenue, a few moment walk from the shops and restaurants of Hampstead Village.

Leasehold- A new lease is being granted, expected to be for a term of 999 years.

Service Charge - TBC approx 20% of the outgoings of the building.

EPC Rating: C

Council Tax Band: G

ASKING PRICE: £1,650,000

ARLINGTON

R E S I D E N T I A L

8 Wellington Road, St. John's Wood, London NW8 9SP
info@arlingtonresidential.com

+44 (0)20 7722 3322

arlingtonresidential.com









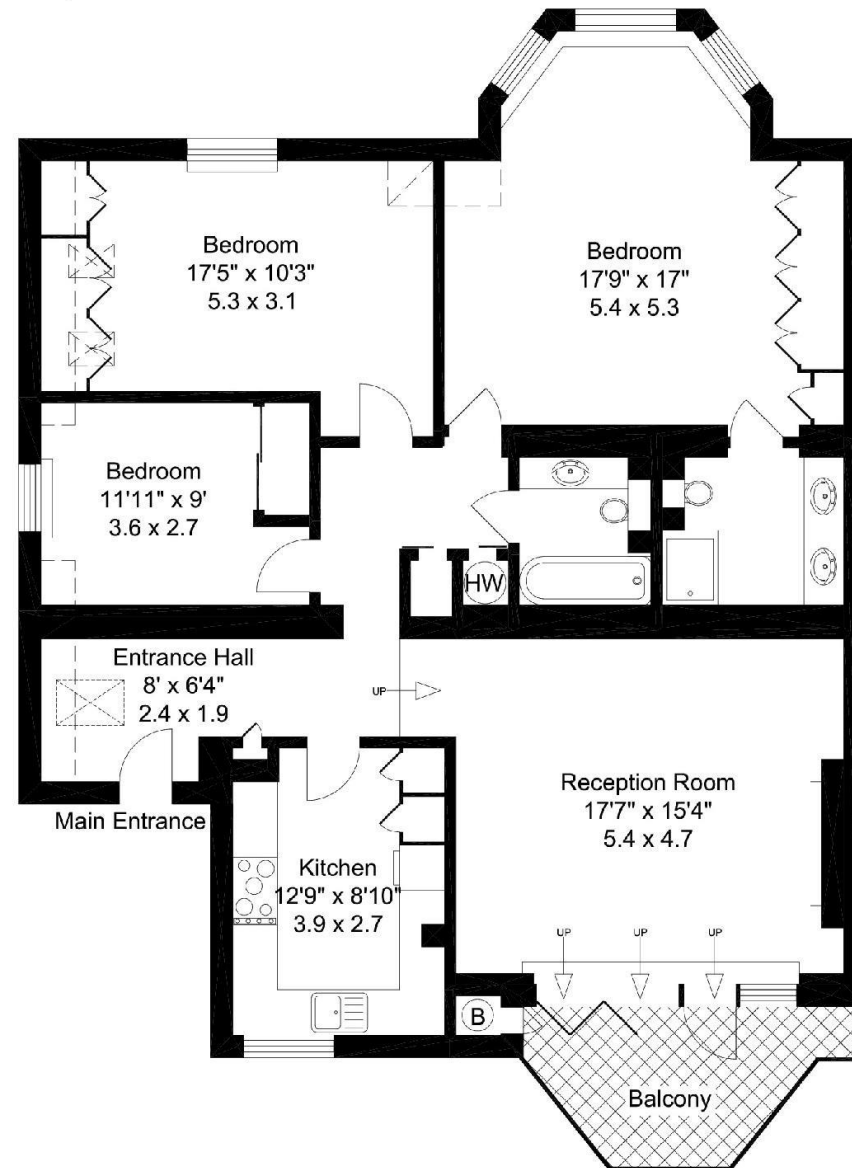


Fitzjohns Avenue

120 sq m (1,295 sq ft)

For identification purposes only. Not to scale

© Redinventory 2010.



Third Floor