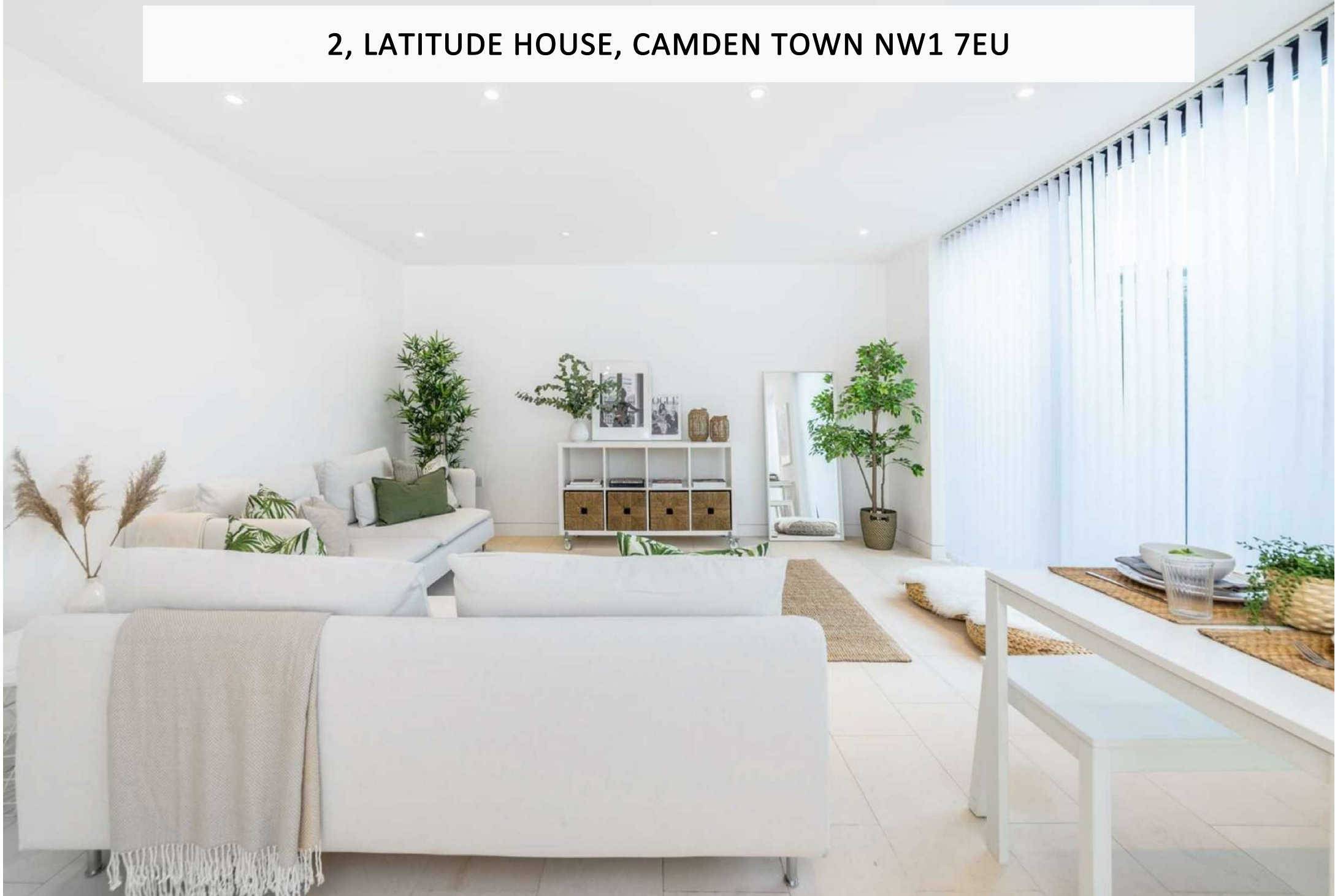


2, LATITUDE HOUSE, CAMDEN TOWN NW1 7EU



2, LATITUDE HOUSE, CAMDEN TOWN NW1 7EU

This stylish two bedroom contemporary ground floor apartment opens onto both front and rear private terraces and provides well presented open plan living spaces.

Latitude House is a modern purpose built block located within approximately 300 metres of Regents Park's open spaces. Camden Town and its world famous markets are within a few minutes' walk. The nearest underground station is Camden Town Northern line - 0.3 miles.

- 2 Bedrooms • 2 Bathrooms (1 en suite) • Reception Room • Open Plan Kitchen • 2 Private terraces

EPC Rating: C Council Tax Band: F

£1,100 PER WEEK
FURNISHED/UNFURNISHED

TENANTS FEES: As well as paying the rent, tenants may also be required to make the following permitted payments:

Holding Deposit (maximum of 1 week's rent)

Security Deposit equivalent to 5 or 6 weeks' rent (AST tenancies)

Utilities, Communications services charges including TV licence, and Council Tax

Misrepresentation Act 1967. This brochure and the descriptions and measurements herein do not constitute representation and whilst every effort has been made to ensure accuracy, this cannot be guaranteed.

ARLINGTON

RESIDENTIAL

020 7722 3322

arlingtonresidential.com



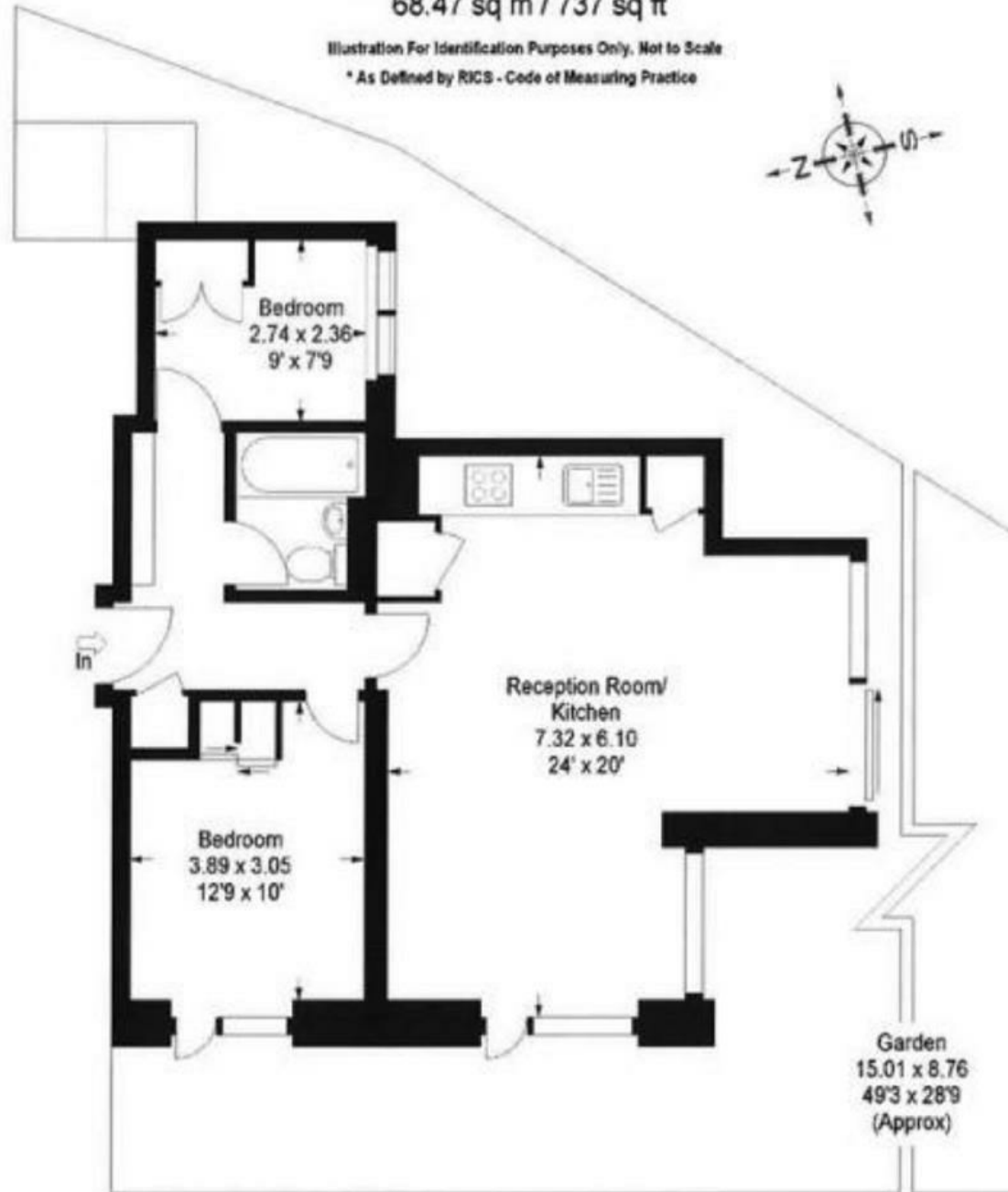
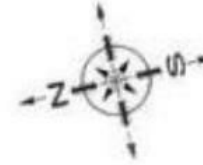




Latitude House, NW1

Approx. Gross Internal Area : -
68.47 sq m / 737 sq ft

Illustration For Identification Purposes Only. Not to Scale
* As Defined by RICS - Code of Measuring Practice



Ground Floor