



Rosemont Road, Hampstead, NW3

ARLINGTON
RESIDENTIAL

A beautiful Victorian four-bedroom, two-bathroom house (1708 sq ft / 158 sq m). The property was updated by the current owner who built the second floor, adding a roof terrace and incredible kitchen dining area. The ground floor comprises a spacious reception, bedroom with a separate walk-in wardrobe and a laundry room. The first floor comprises a spacious kitchen with floor to ceiling windows, as well as a large bedroom and family bathroom. The second floor consists of a large master bedroom with a dressing room that leads through to an en-suite as well as a terrace and third bedroom.

Rosemont Road is a residential area close to the shops, bars and restaurants of Finchley Road, Hampstead & West Hampstead. Finchley Road underground station (Jubilee and Metropolitan lines) are also close by.

ACCOMMODATION AND AMENITIES

- Victorian house
- Private terrace
- Balcony
- Communal garden

ASKING PRICE: £1,475,000

FREEHOLD

ARLINGTON

RESIDENTIAL

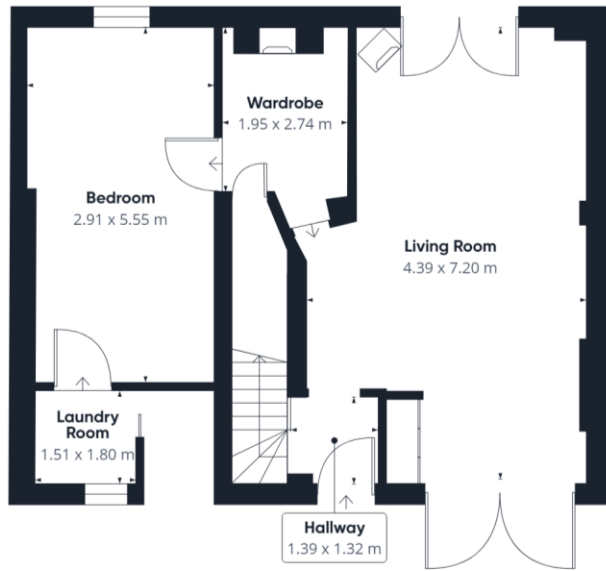
8 Wellington Road, St. John's Wood, London NW8 9SP
info@arlingtonresidential.com

+44 (0)20 7722 3322
arlingtonresidential.com

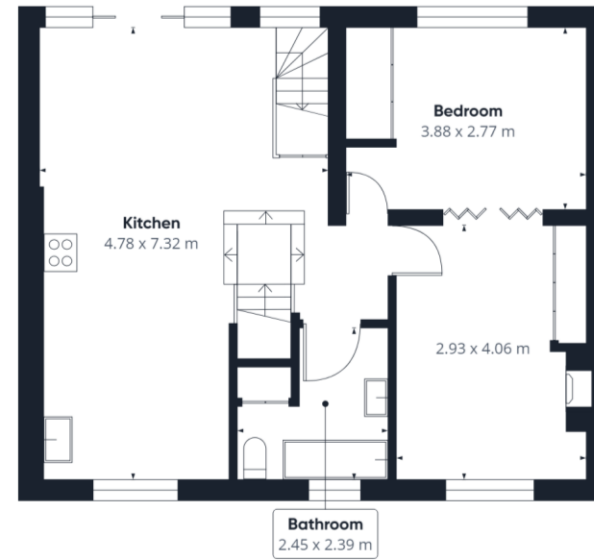




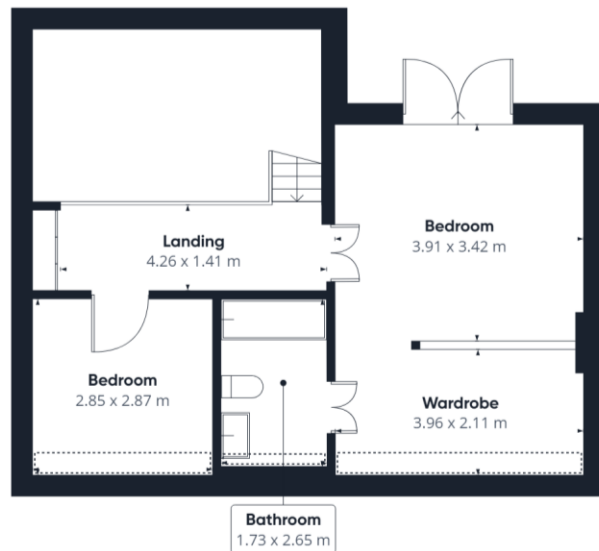




Floor 0



Floor 1



Floor 2

Approximate total area⁽¹⁾

158.74 m²

Reduced headroom

2.94 m²

(1) Excluding balconies and terraces

Reduced headroom
(below 1.5m/4.92ft)

While every attempt has been made to ensure accuracy, all measurements are approximate, not to scale. This floor plan is for illustrative purposes only.