



Blomfield Road, Little Venice, W9

ARLINGTON
RESIDENTIAL

A contemporary townhouse comprising of 2,049 square feet (190 sq metres) set in the heart of Little Venice. The property is presented to a high decorative standard and boasts an abundance of light as well as offering excellent bedroom accommodation including a principle bedroom with a south-facing balcony. Further benefits include spacious family/living accommodation, off-street parking for two cars and a private rear garden. Blomfield Road is located opposite The Regents' Canal and is a few moments walk away from the amenities of Clifton Road as well as Warwick Avenue Underground Station (Bakerloo Line).

Council Tax Band: G

EPC: TBC

Freehold

GUIDE PRICE £4,250,000

ARLINGTON

RESIDENTIAL

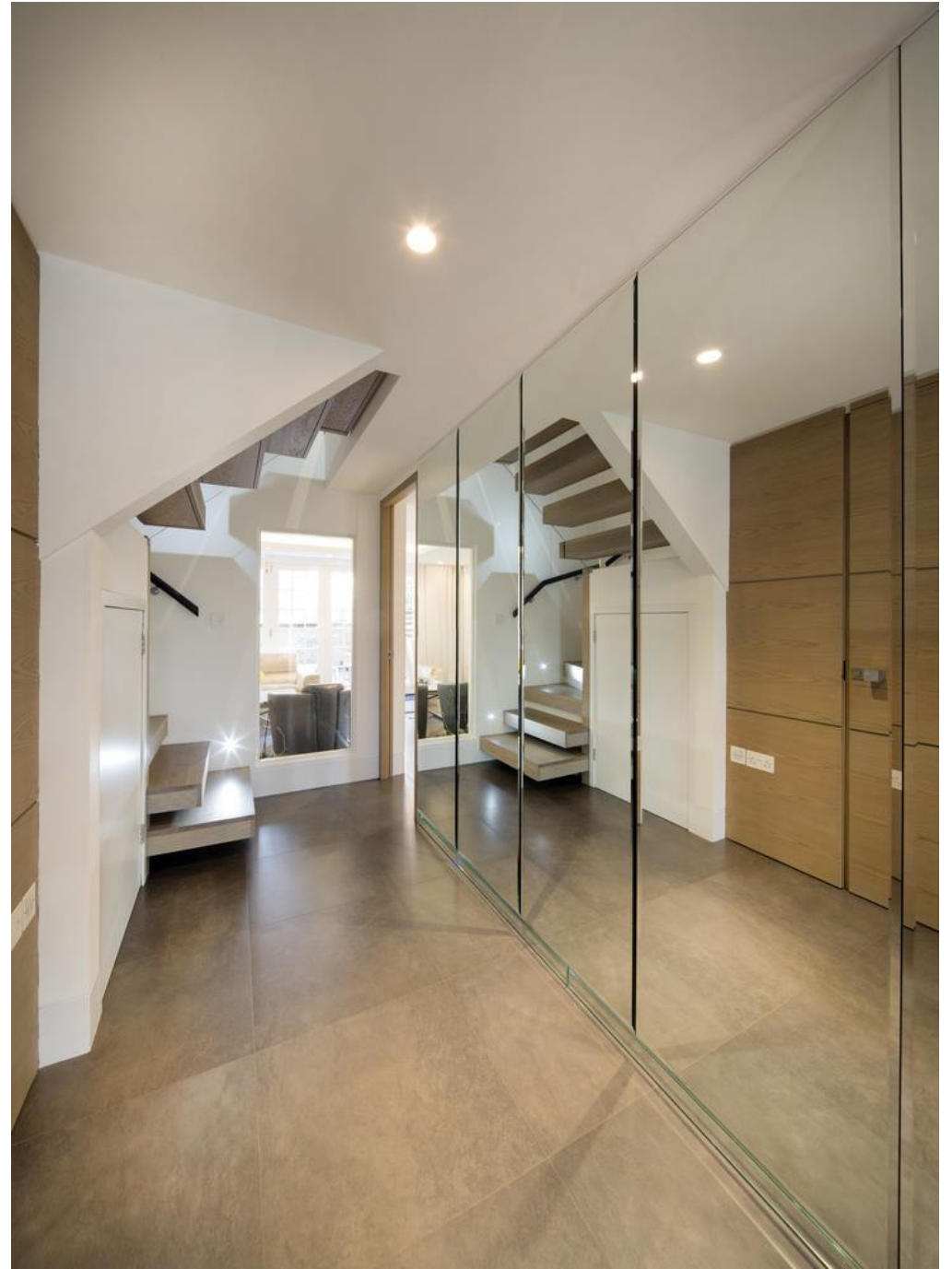
8 Wellington Road, St. John's Wood, London NW8 9SP
info@arlingtonresidential.com

+44 (0)20 7722 3322
arlingtonresidential.com









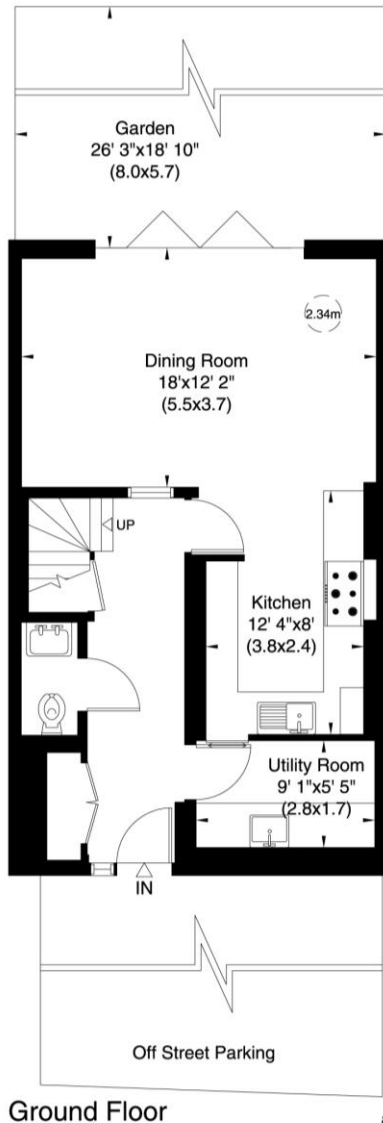
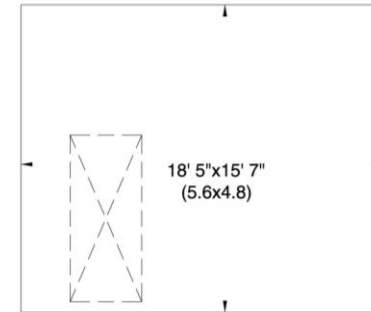




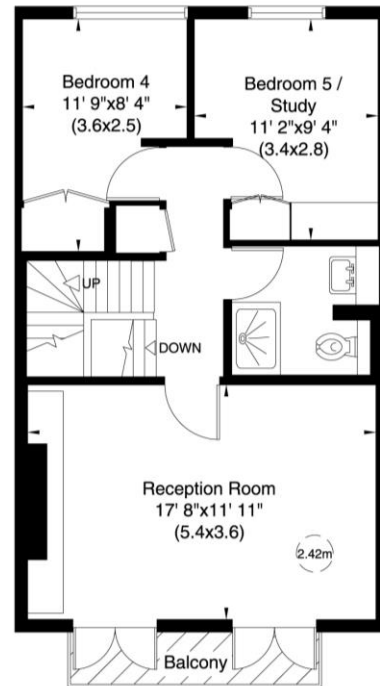
2 BLOMFIELD ROAD LONDON W9

Gross Internal Area: 190 Sq. metres
Including Under 1.5m 2049 Sq. feet

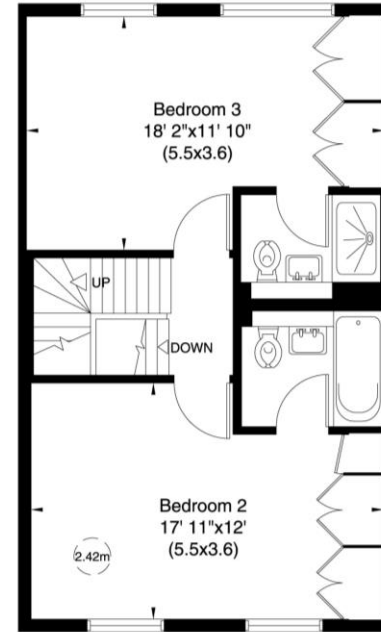
Gross Internal Area: 190 Sq. metres
Excluding Under 1.5m 2045 Sq. feet



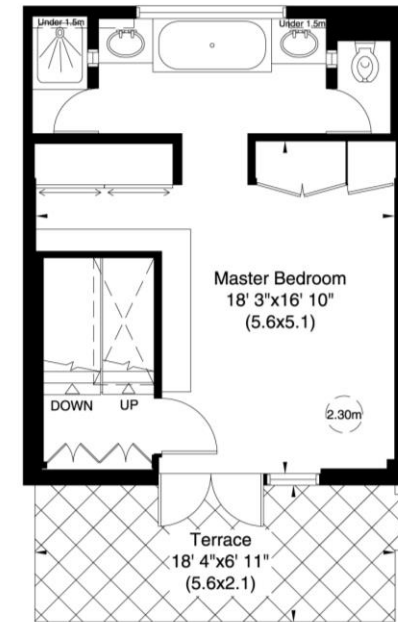
Ground Floor



First Floor



Second Floor



Third Floor

Not to scale, for guidance only and must not be relied upon as a statement of fact. All measurements and areas are approximate only (and have been prepared in accordance with the current edition of the RICS Code of Measuring Practice).