

MARYLEBONE LANE, LONDON W1U 2PW



MARYLEBONE LANE, LONDON W1U 2PW

Short Term Serviced Apartment (14 days minimum). This stunning 3 bedroom 2 bathroom apartment is on the 4th floor and benefits from a private planted terrace. The open plan kitchen and living space is feels spacious but cosy. Each bedroom boasts a super king bed, one of which has an en suite bathroom. Marylebone is one of London's most fashionable neighbourhoods, located in the heart of the West End, with world famous shopping, eating and entertaining facilities on the doorstep. The nearest tube station is Bond Street just 5 minutes' walk away.

NOTE: There is no lift at Marylebone Lane. Rate is exclusive of VAT. Rate includes dedicated concierge services and housekeeping, fast-speed wifi, utilities and welcome provisions on arrival.

- 3 BEDROOMS • FAMILY BATHROOM • EN SUITE BATHROOM • RECEPTION ROOM • OPEN PLAN KITCHEN • PRIVATE PLANTED TERRACE • DEDICATED CONCIERGE & HOUSEKEEPING SERVICE • RENT INCLUDES UTILITIES, COUNCIL TAX, FAST SPEED WIFI • PETS WELCOME (T&Cs APPLY)

EPC Rating: B

£4,165 (FROM) PER WEEK
FURNISHED

TENANTS FEES: As well as paying the rent, tenants may also be required to make the following permitted payments:

Holding Deposit (maximum of 1 week's rent)

Security Deposit equivalent to 5 or 6 weeks' rent (AST tenancies)

Utilities, Communications services charges including TV licence, and Council Tax

Misrepresentation Act 1967. This brochure and the descriptions and measurements herein do not constitute representation and whilst every effort has been made to ensure accuracy, this cannot be guaranteed.

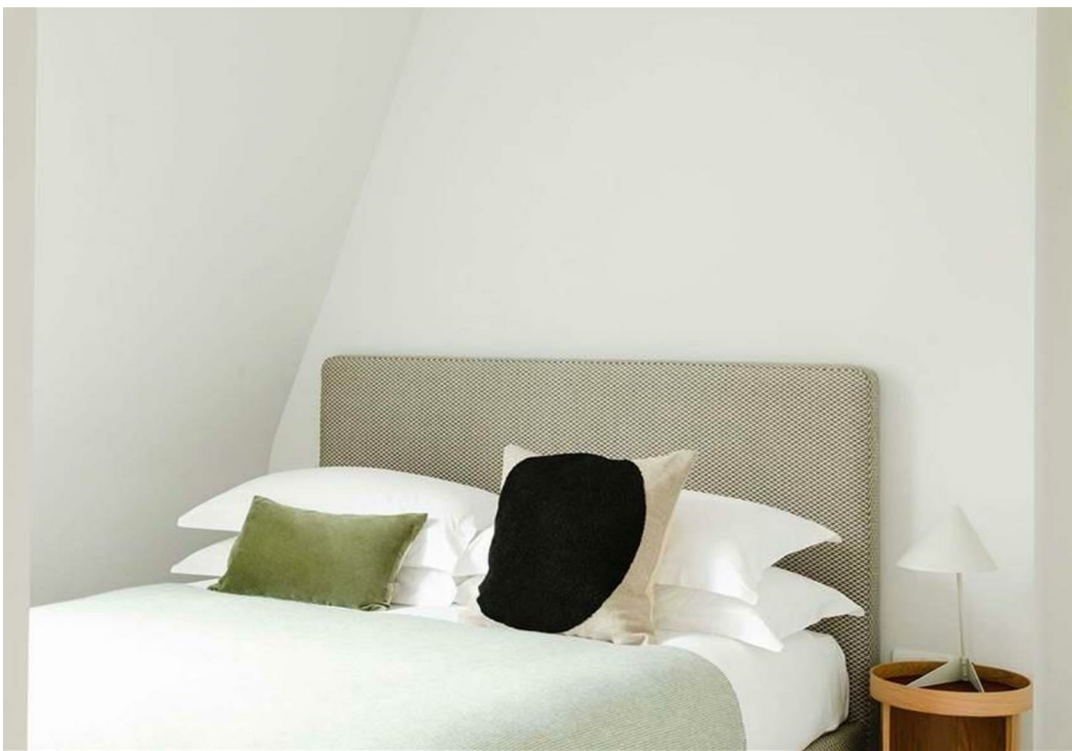
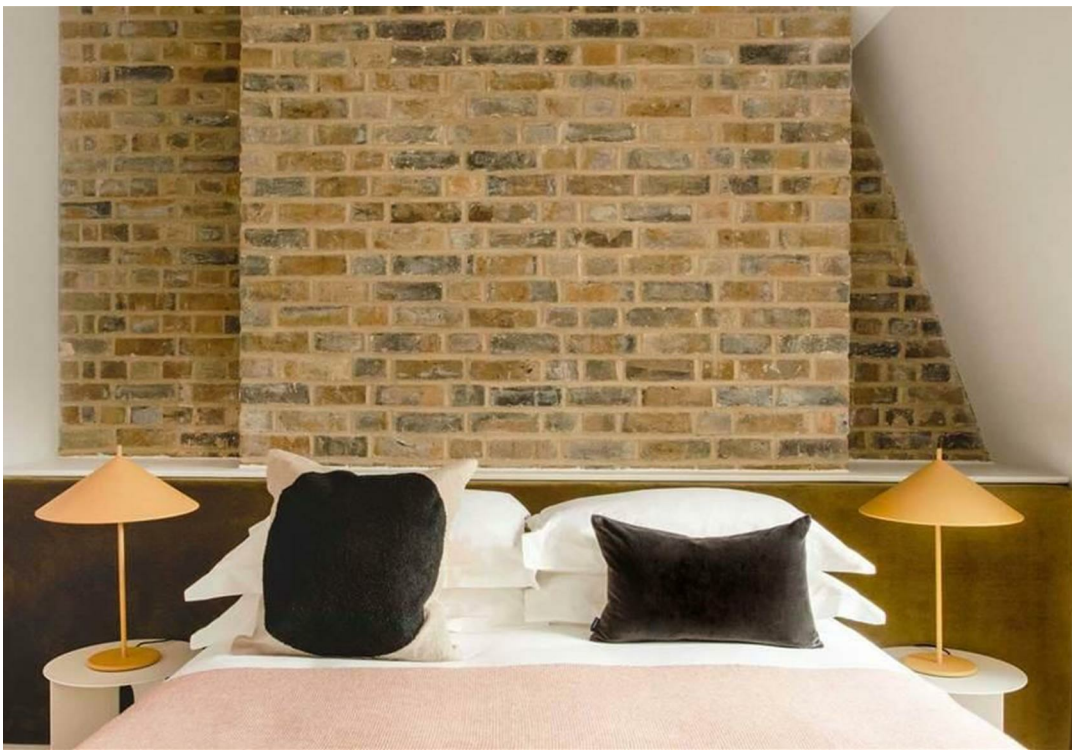
ARLINGTON

RESIDENTIAL

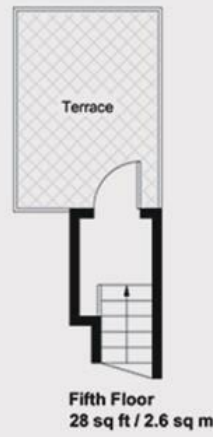
020 7722 3322

arlingtonresidential.com









APARTMENT SEVEN

FOURTH FLOOR (no lift)

1170 SQ FT / 108.7 SQ M

Please note that this is a sample floorplan and actual room layout may vary